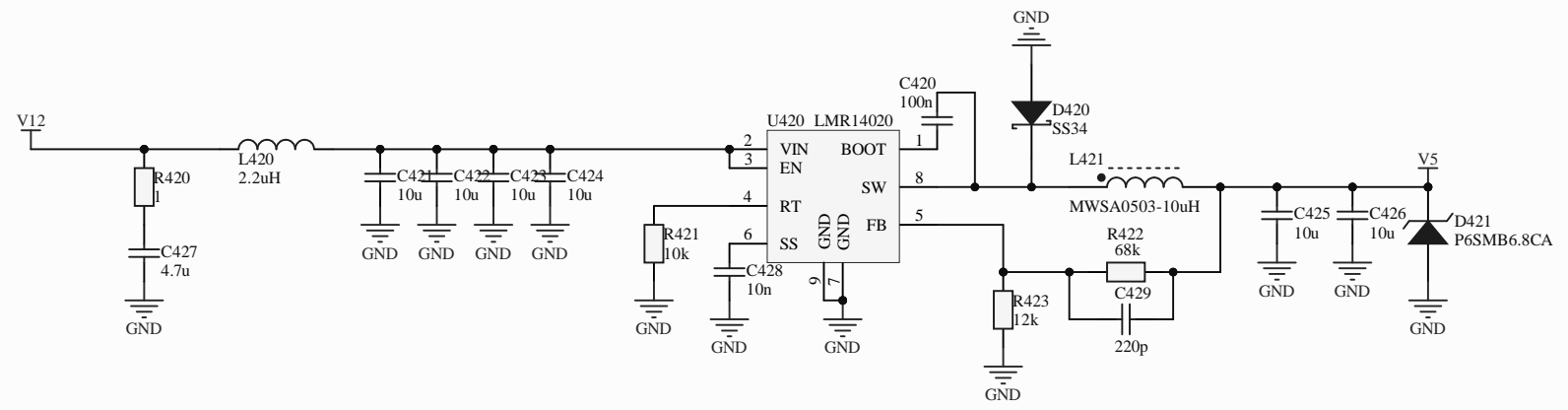
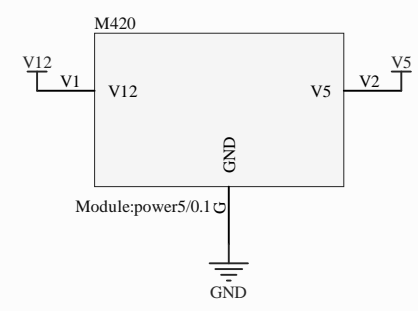
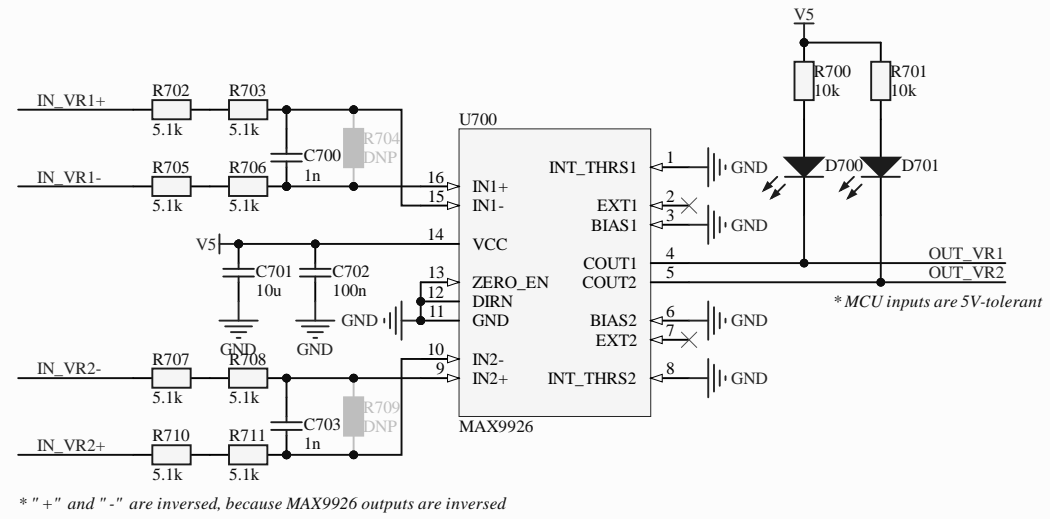
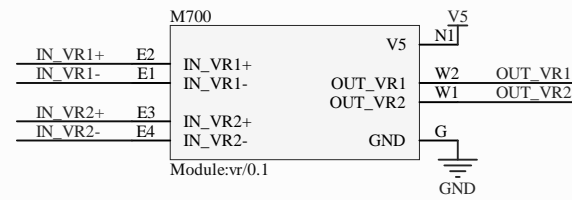


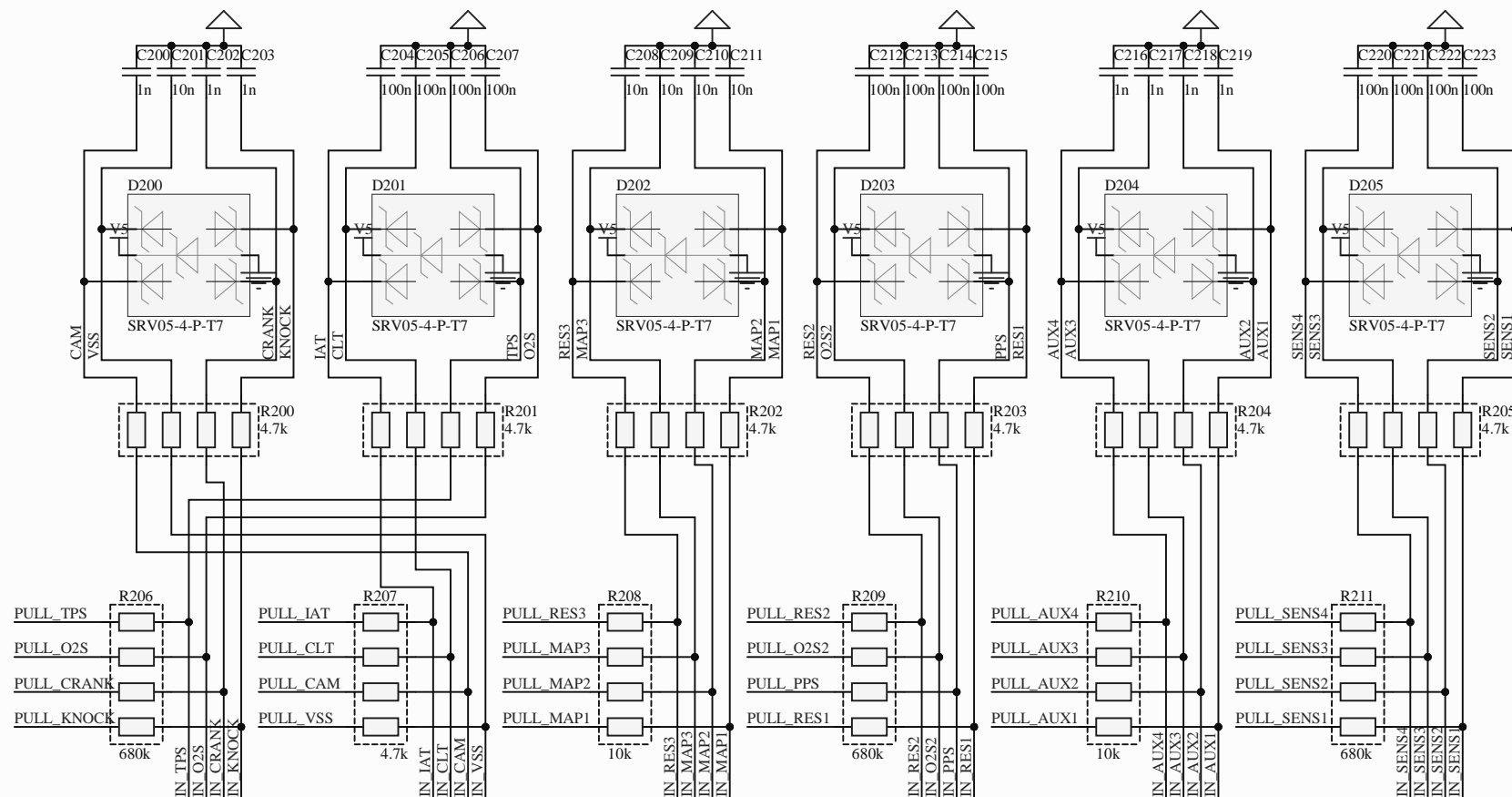
rusefi.com	
Sheet: /	
File: hellen1-wbo.kicad_sch	
Title: WBO	
Size: A4	Date: 2021-09-28
KiCad E.D.A. kicad (5.99.0-12439-g94954386e6)	
Rev: 0.3	
Id: 1/1	





M200D			
PULL_CRANK J21	PULL_CRANK	PULL_MAP1	J14 PULL_MAP1
PULL_CAM J17	PULL_CAM	PULL_MAP2	J13 PULL_MAP2
PULL_VSS J18	PULL_VSS	PULL_MAP3	J12 PULL_MAP3
PULL_TPS J19	PULL_TPS	PULL_AUX1	J10 PULL_AUX1
PULL_PPS J5	PULL_PPS	PULL_AUX2	J9 PULL_AUX2
PULL_IAT J15	PULL_IAT	PULL_AUX3	J8 PULL_AUX3
PULL_CLT J16	PULL_CLT	PULL_AUX4	J7 PULL_AUX4
PULL_O2S J20	PULL_O2S	PULL_SENS1	J26 PULL_SENS1
PULL_O2S2 J4	PULL_O2S2	PULL_SENS2	J25 PULL_SENS2
PULL_RES1 J6	PULL_RES1	PULL_SENS3	J24 PULL_SENS3
PULL_RES2 J3	PULL_RES2	PULL_SENS4	J23 PULL_SENS4
PULL_RES3 J11	PULL_RES3	PULL_KNOCK	J22 PULL_KNOCK

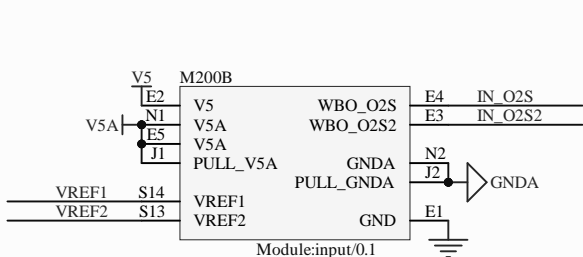
Module:input/0.1



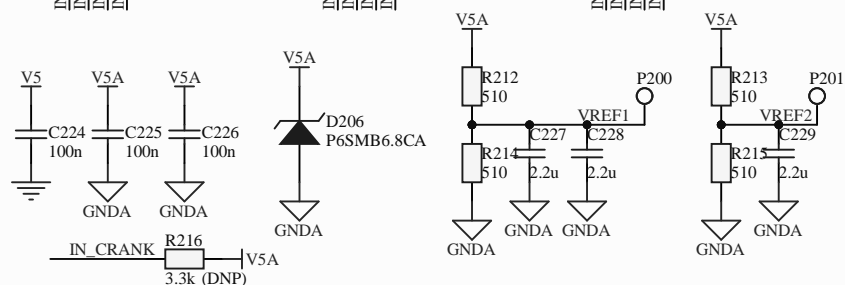
M200C		M200A	
IN_CRANK S8	IN_CRANK	N21 CRANK	
IN_CAM S5	IN_CAM	N19 CAM	
IN_VSS S6	IN_VSS	N20 VSS	
IN_TPS S10	IN_TPS	N17 TPS	
IN_PPS S24	IN_PPS	N5 PPS	
IN_IAT S16	IN_IAT	N15 IAT	
IN_CLT S15	IN_CLT	N16 CLT	
IN_O2S S9	IN_O2S	N18 O2S	
IN_O2S2 S25	IN_O2S2	N4 O2S2	
IN_RES1 S23	IN_RES1	N6 RES1	
IN_RES2 S26	IN_RES2	N3 RES2	
IN_RES3 S22	IN_RES3	N11 RES3	
IN_MAP1 S11	IN_MAP1	N14 MAP1	
IN_MAP2 S12	IN_MAP2	N13 MAP2	
IN_MAP3 S19	IN_MAP3	N12 MAP3	
IN_AUX1 S17	IN_AUX1	N10 AUX1	
IN_AUX2 S18	IN_AUX2	N9 AUX2	
IN_AUX3 S20	IN_AUX3	N8 AUX3	
IN_AUX4 S21	IN_AUX4	N7 AUX4	
IN_SENS1 S1	IN_SENS1	N26 SENS1	
IN_SENS2 S2	IN_SENS2	N25 SENS2	
IN_SENS3 S3	IN_SENS3	N24 SENS3	
IN_SENS4 S4	IN_SENS4	N23 SENS4	
IN_KNOCK S7	IN_KNOCK	N22 KNOCK	

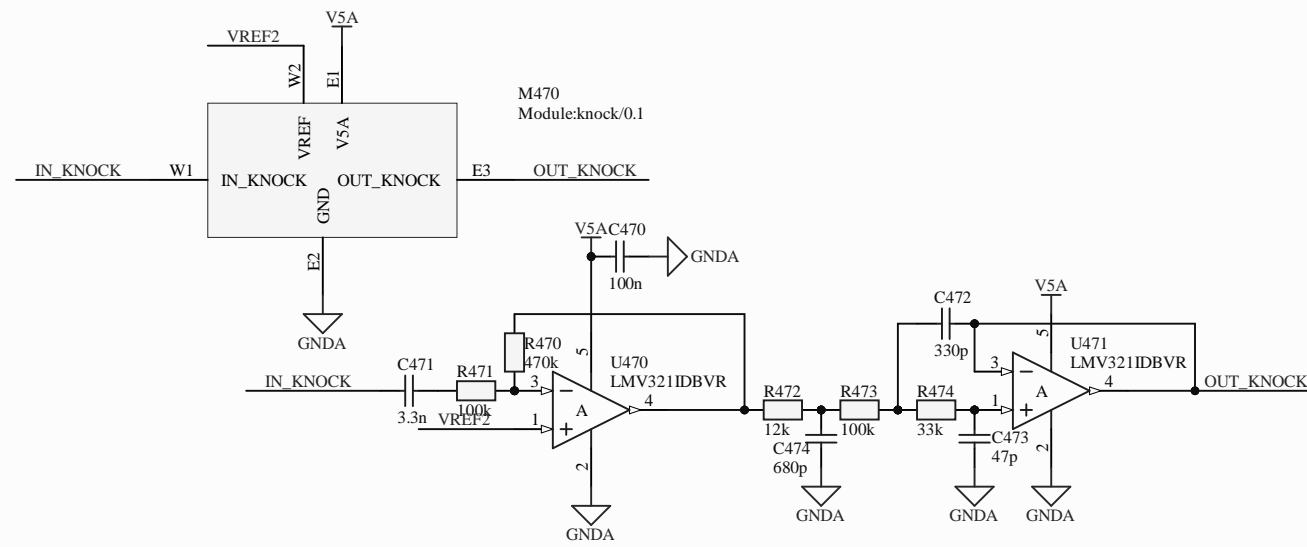
Module:input/0.1

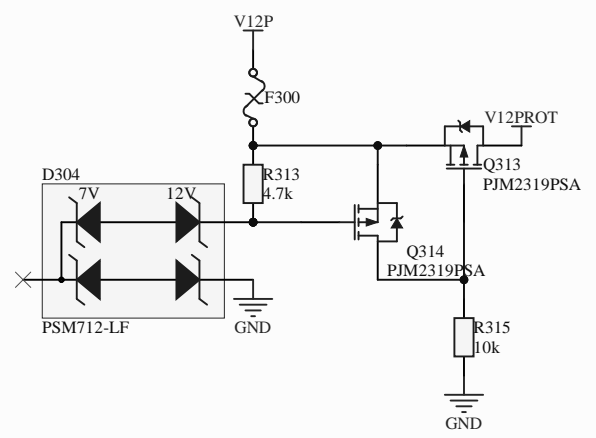
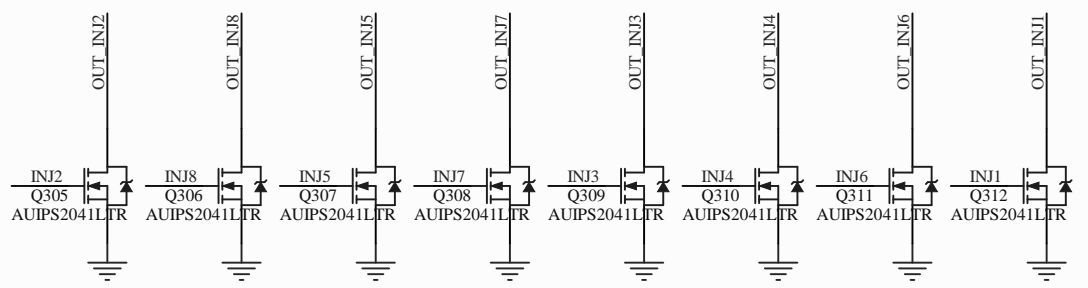
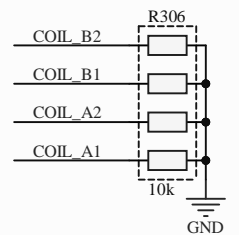
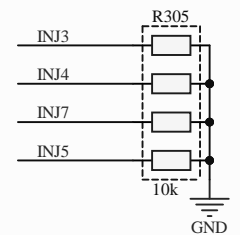
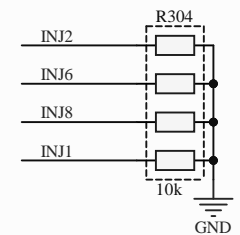
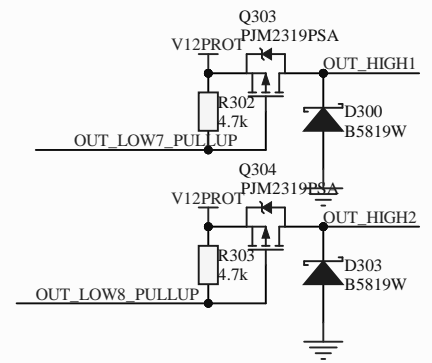
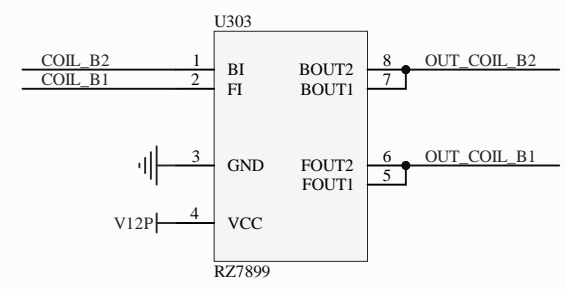
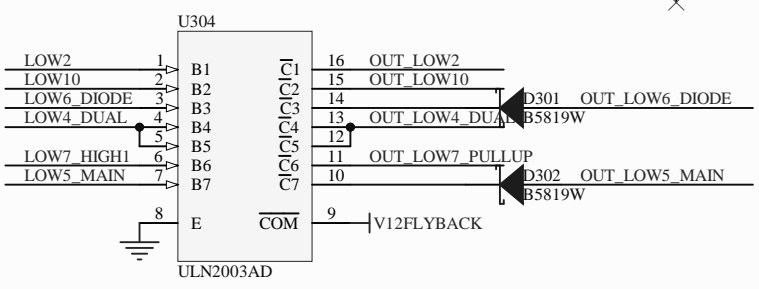
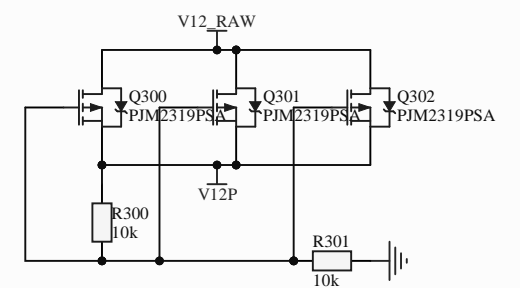
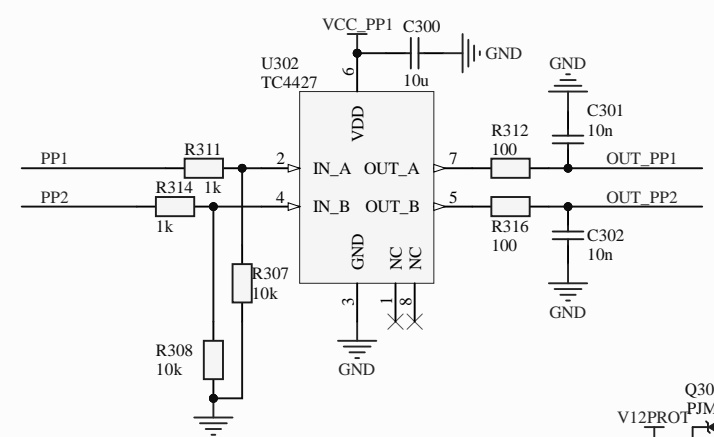
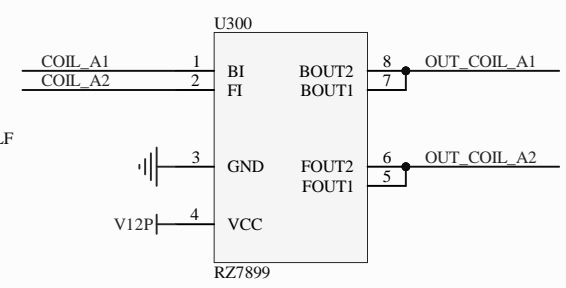
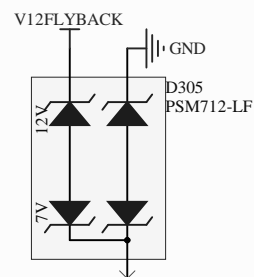
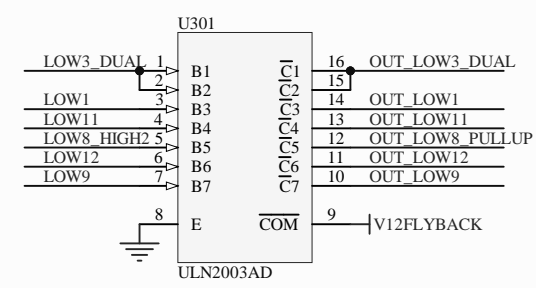
Module:input/0.1



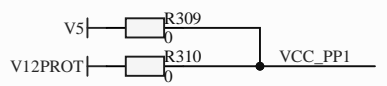
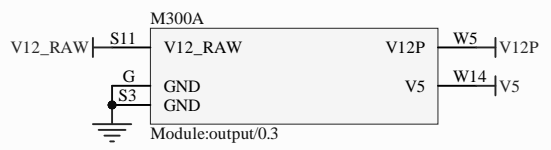
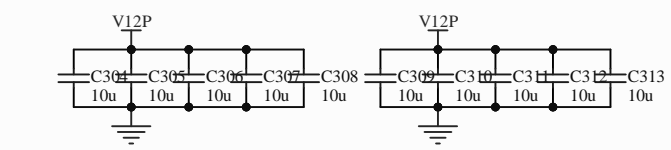
Module:input/0.1



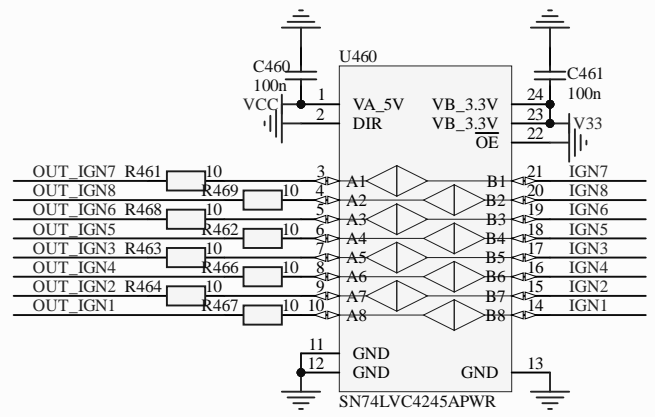
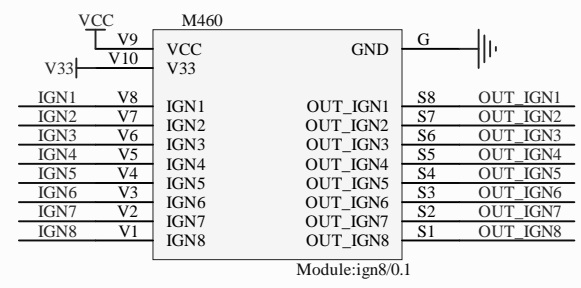


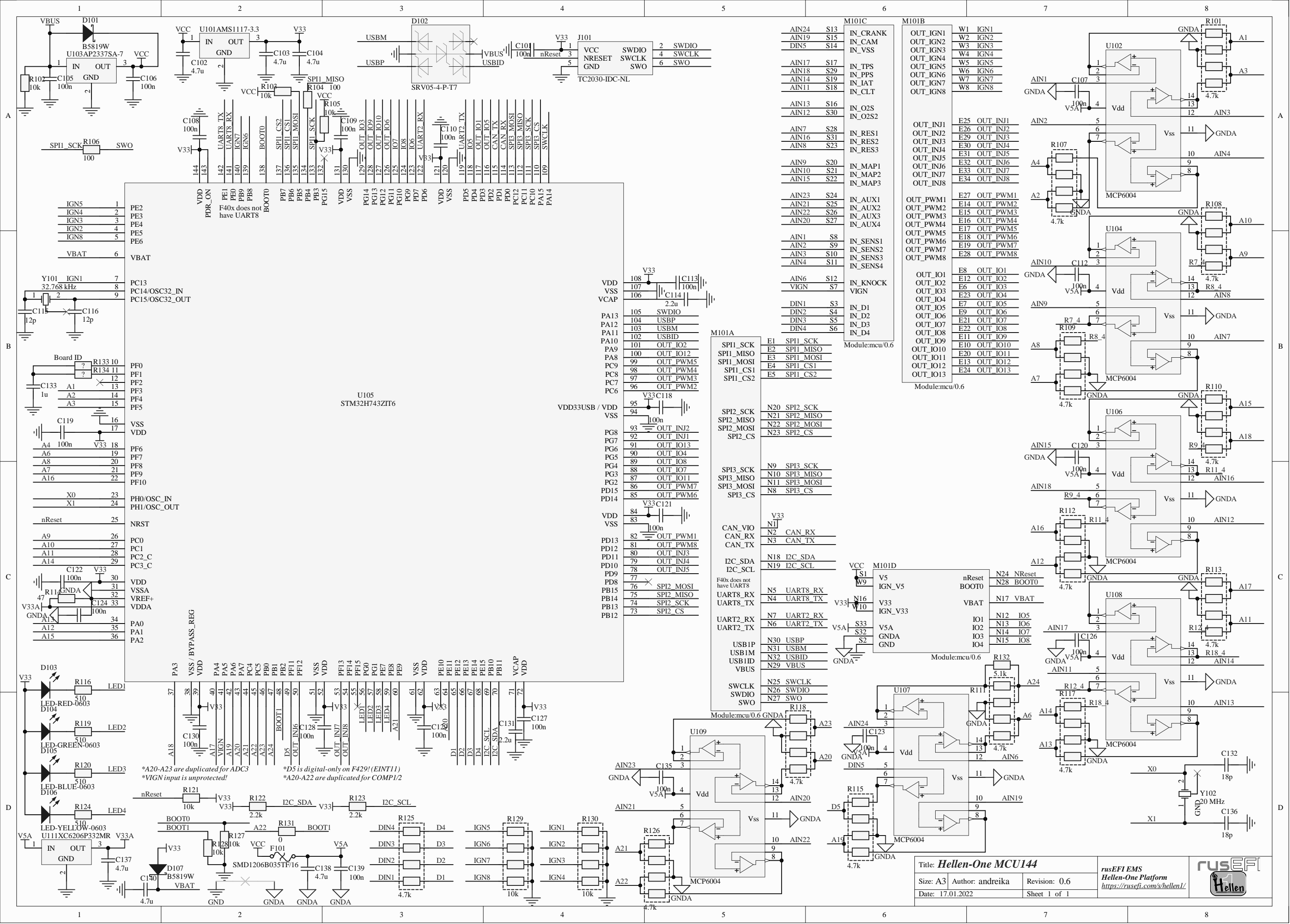


M300B		M300C	
INJ1	W24	OUT_INJ1	S18
INJ2	W23	OUT_INJ2	S16
INJ3	W20	OUT_INJ3	S17
INJ4	W19	OUT_INJ4	W7
INJ5	W18	OUT_INJ5	W10
INJ6	W17	OUT_INJ6	S15
INJ7	W16	OUT_INJ7	W12
INJ8	W15	OUT_INJ8	W11
PP1	W28	OUT_PP1	W6
PP2	W22	OUT_PP2	S6
COIL_A1	W33	OUT_SOLENOID_A1	S1
COIL_A2	W32	OUT_SOLENOID_A2	S2
COIL_B1	W31	OUT_SOLENOID_B1	S4
COIL_B2	W30	OUT_SOLENOID_B2	S5
LOW1	W21	OUT_LOW1	S8
LOW2	W29	OUT_LOW2	W1
LOW3_DUAL	W38	OUT_LOW3_DUAL	S7
LOW4_DUAL	W34	OUT_LOW4_DUAL	W4
LOW5_MAIN	W40	OUT_LOW4_DUAL	W13
LOW6_DIODE	W25	OUT_LOW5_MAIN	W3
LOW7_HIGH1	W39	OUT_LOW6_DIODE	W9
LOW8_HIGH2	W37	OUT_LOW7_PULLUP	S12
LOW9	W27	OUT_LOW8_PULLUP	S14
LOW10	W26	OUT_LOW9	W2
LOW11	W35	OUT_LOW10	S10
LOW12	W36	OUT_LOW11	S13
		OUT_LOW12	
		OUT_HIGH1	W8
		OUT_HIGH2	S9



* These can be removed in the board compilation file





IGN5	1	PE2	VDD_ON	144	143
IGN4	2	PE3	PE1	142	141
IGN3	3	PE4	PE0	140	139
IGN2	4	PE5	IGN7	138	137
IGN8	5	PE6	IGN6	136	135
VBAT	6	VBAT	IGN5	134	133
Y101_IGN1	7	PC13	BOOT0	132	131
PC14/OSC32_IN	8	PC15/OSC32_OUT	PB7	130	129
PC15/OSC32_OUT	9		PB6	128	127
PF0	10		PB5	126	125
PF1	11		PB4	124	123
PF2	12		PB3	122	121
PF3	13		PG14	120	119
PF4	14		PG13	118	117
PF5	15		PG12	116	115
VSS	16		PG11	114	113
VDD	17		PG10	112	111
PF6	18		PG9	110	109
PF7	19		PD5	108	107
PF8	20		PD4	106	105
PF9	21		PD3	104	103
PF10	22		PD2	102	101
X0	23	PH0/OSC_IN	PD1	100	99
X1	24	PH1/OSC_OUT	PD0	98	97
nReset	25	NRST	PC8	96	95
A9	26	PC0	PC7	94	93
A10	27	PC1	PC6	92	91
A11	28	PC2_C	PG8	90	89
A14	29	PC3_C	PG7	88	87
VDD	30		PG6	86	85
VSSA	31		PG5	84	83
VREF+	32		PG4	82	81
VDDA	33		PG3	80	79
PA0	34		PG2	78	77
PA1	35		PD15	76	75
PA2	36		PD14	74	73
VSS / BYPASS_REG	37		PD13	72	71
PA3	38		PD12	70	69
PA4	39		PD11	68	67
PA5	40		PD10	66	65
PA6	41		PD9	64	63
PA7	42		PD8	62	61
PA8	43		VCAP	60	59
PA9	44		VDD	58	57
PA10	45		VSS	56	55
PA11	46		PE10	54	53
PA12	47		PE9	52	51
PA13	48		PE8	50	49
PA14	49		PE7	48	47
PE15	50		PE6	46	45
PG0	51		PE5	44	43
PG1	52		PE4	42	41
PG2	53		PE3	40	39
PG3	54		PE2	38	37
PG4	55		PE1	36	35
PG5	56		BOOT1	34	33
PG6	57		D5	32	31
PG7	58		OUT_INJ6	30	29
PG8	59		OUT_INJ7	28	27
PG9	60		OUT_INJ8	26	25
I2C_SCL	61		LED1	24	23
I2C_SDA	62		LED2	22	21
IO5	63		LED3	20	19
IO6	64		LED4	18	17
IO7	65		D1	16	15
IO8	66		D2	14	13
IO9	67		D3	12	11
IO10	68		D4	10	9
IO11	69		D5	8	7
IO12	70		DIN4	6	5
IO13	71		DIN3	4	3
OUT_PWM1	72		DIN2	2	1
OUT_PWM2	73		DIN1	1	0
OUT_PWM3	74		IGN5	0	0
OUT_PWM4	75		IGN6	0	0
OUT_PWM5	76		IGN7	0	0
OUT_PWM6	77		IGN8	0	0
OUT_PWM7	78				
OUT_PWM8	79				

AIN23	3		AIN20	12	
AIN21	5		AIN19	8	
AIN22	6		AIN18	9	
AIN20	7		AIN17	10	
AIN19	8		AIN16	11	
AIN18	9		AIN15	12	
AIN17	10		AIN14	13	
AIN16	11		AIN13	14	
AIN15	12		AIN12	15	
AIN14	13		AIN11	16	
AIN13	14		AIN10	17	
AIN12	15		AIN9	18	
AIN11	16		AIN8	19	
AIN10	17		AIN7	20	
AIN9	18		AIN6	21	
AIN8	19		AIN5	22	
AIN7	20		AIN4	23	
AIN6	21		AIN3	24	
AIN5	22		AIN2	25	
AIN4	23		AIN1	26	
AIN3	24				
AIN2	25				
AIN1	26				

