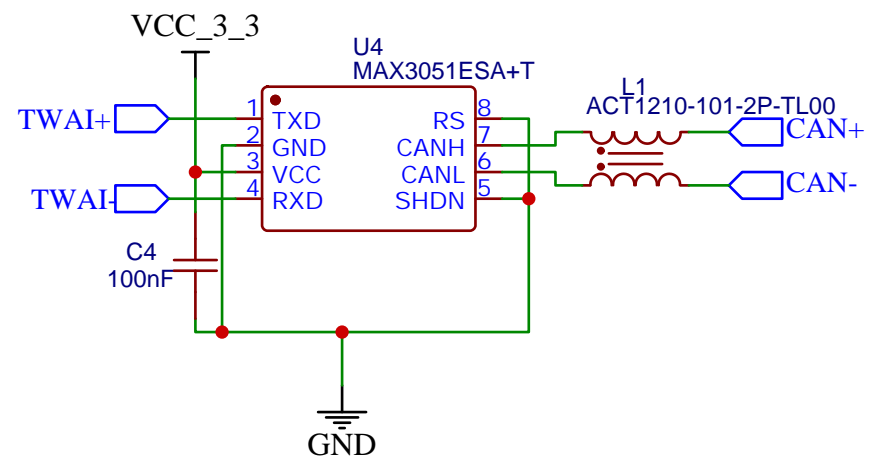
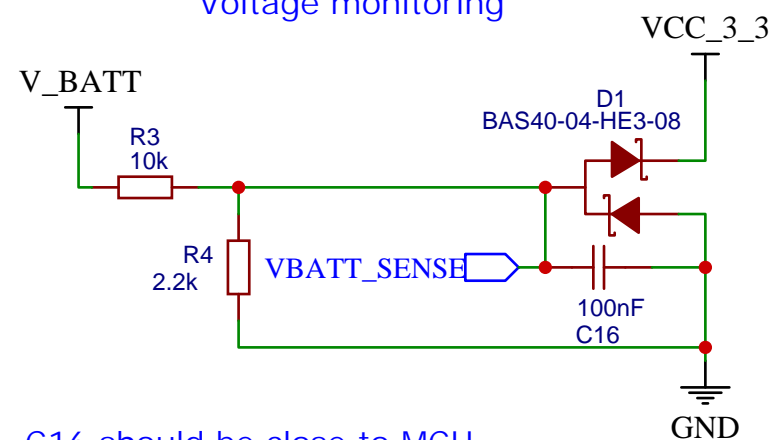


TITLE: MCU and TCM connector		REV: 1.1
EasyEDA	Company: rnd-ash@github.com	Sheet: 1/5
	Date: 2022-06-16	Drawn By: Ashcon Mohseninia

CANBUS

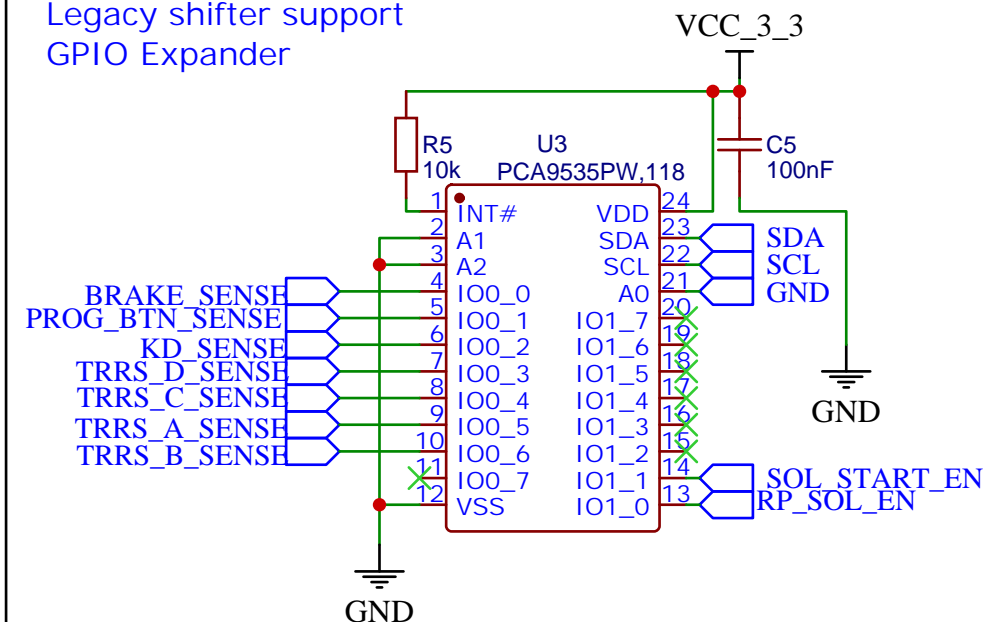


Voltage monitoring

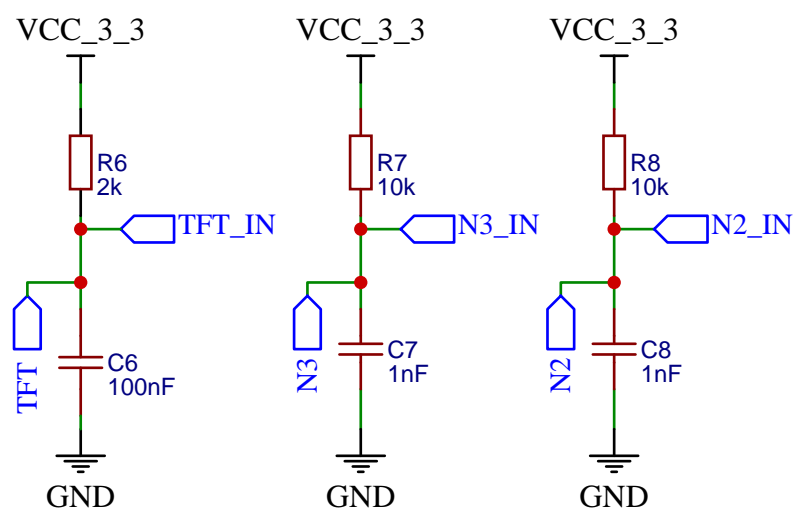


C16 should be close to MCU

Legacy shifter support GPIO Expander

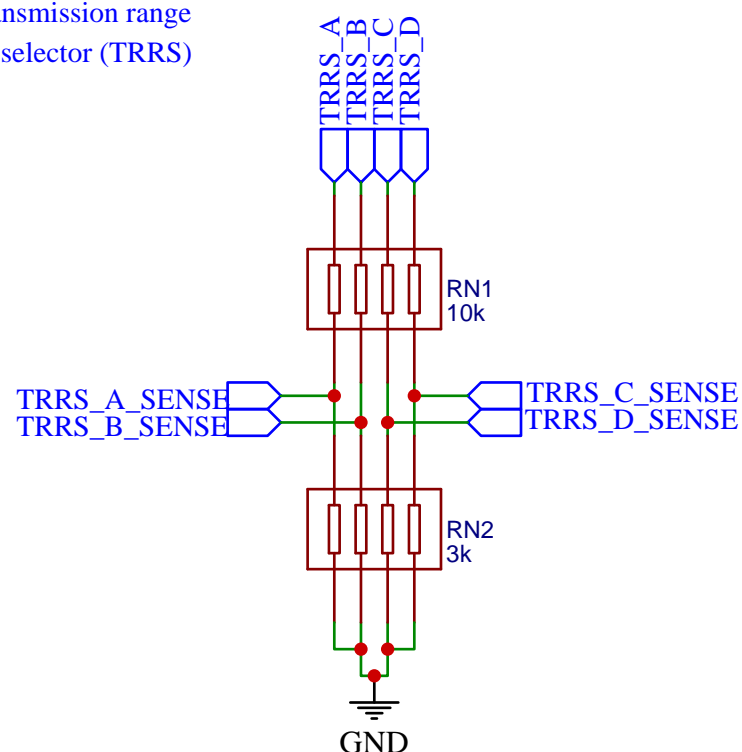


Gearbox Sensors

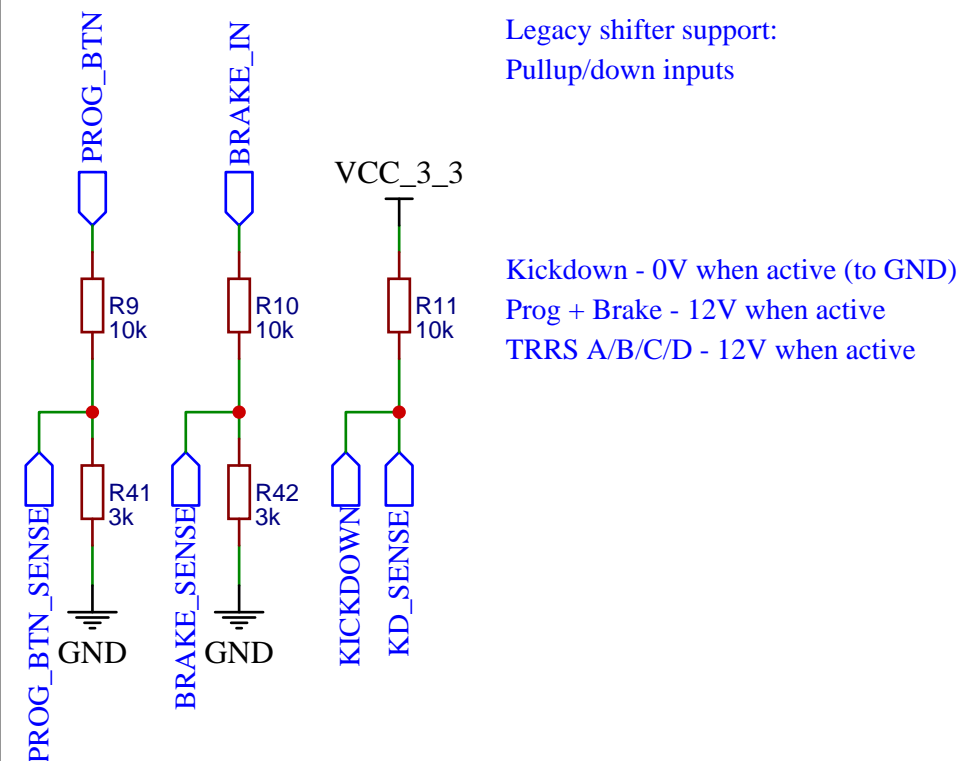


Capacitors should be close to MCU

Legacy shifter support: Transmission range selector (TRRS)



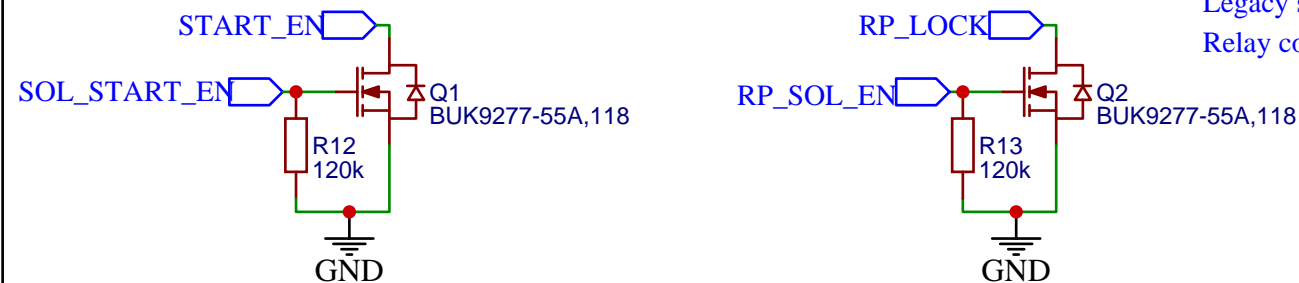
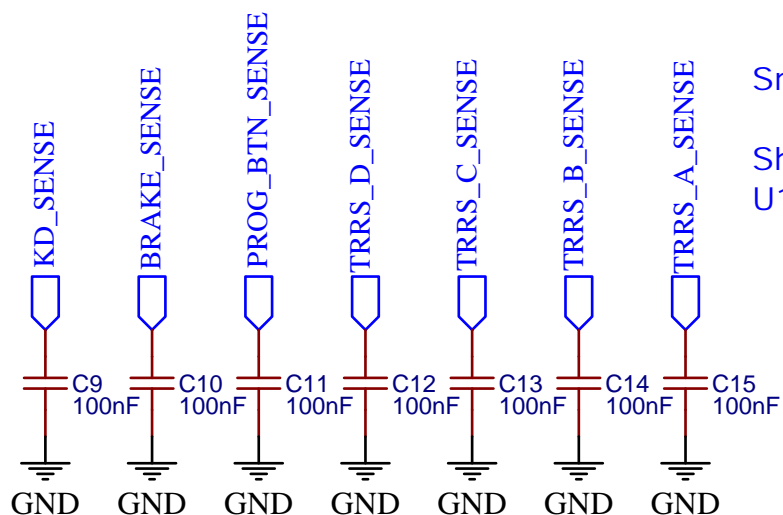
Legacy shifter support: Pullup/down inputs



Kickdown - 0V when active (to GND)
Prog + Brake - 12V when active
TRRS A/B/C/D - 12V when active

Smoothing caps

Should all be close to U15



Legacy shifter support: Relay connections

TITLE:

Vehicle IO and sensors

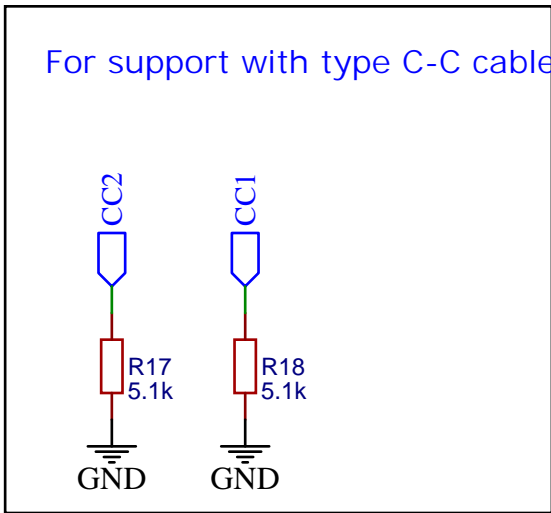
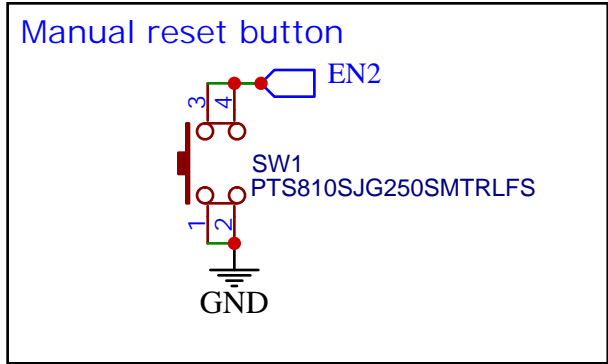
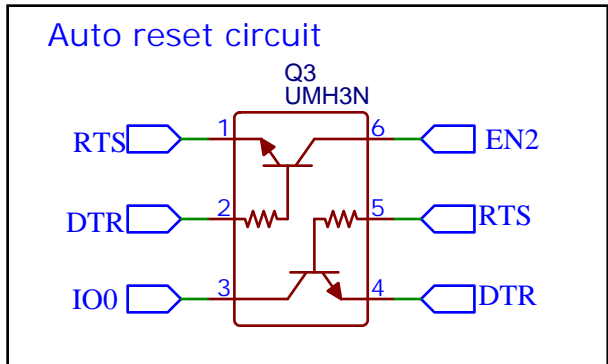
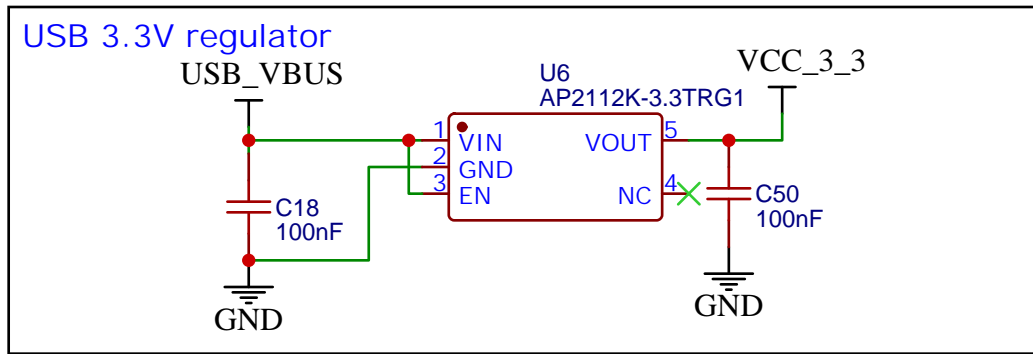
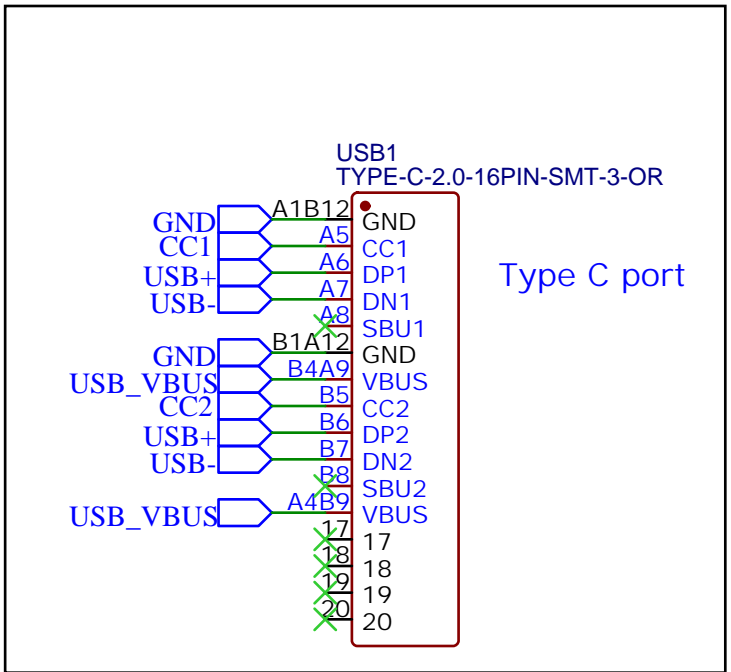
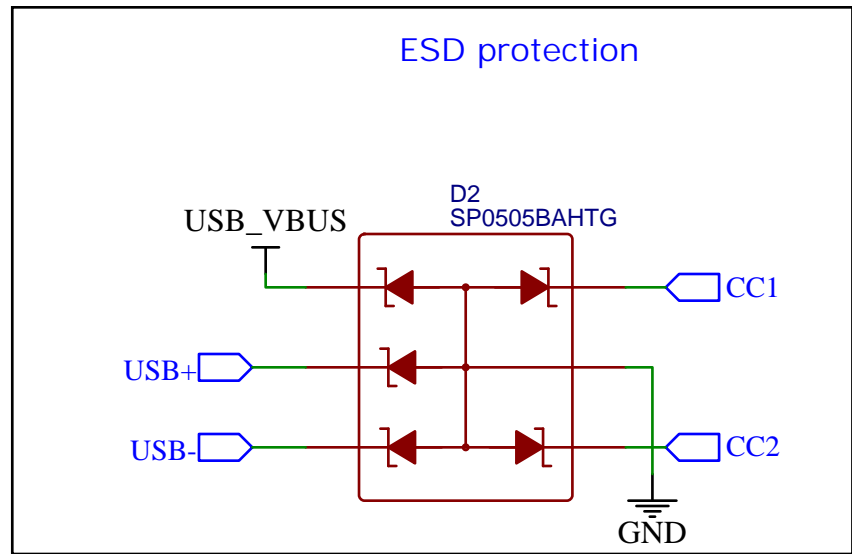
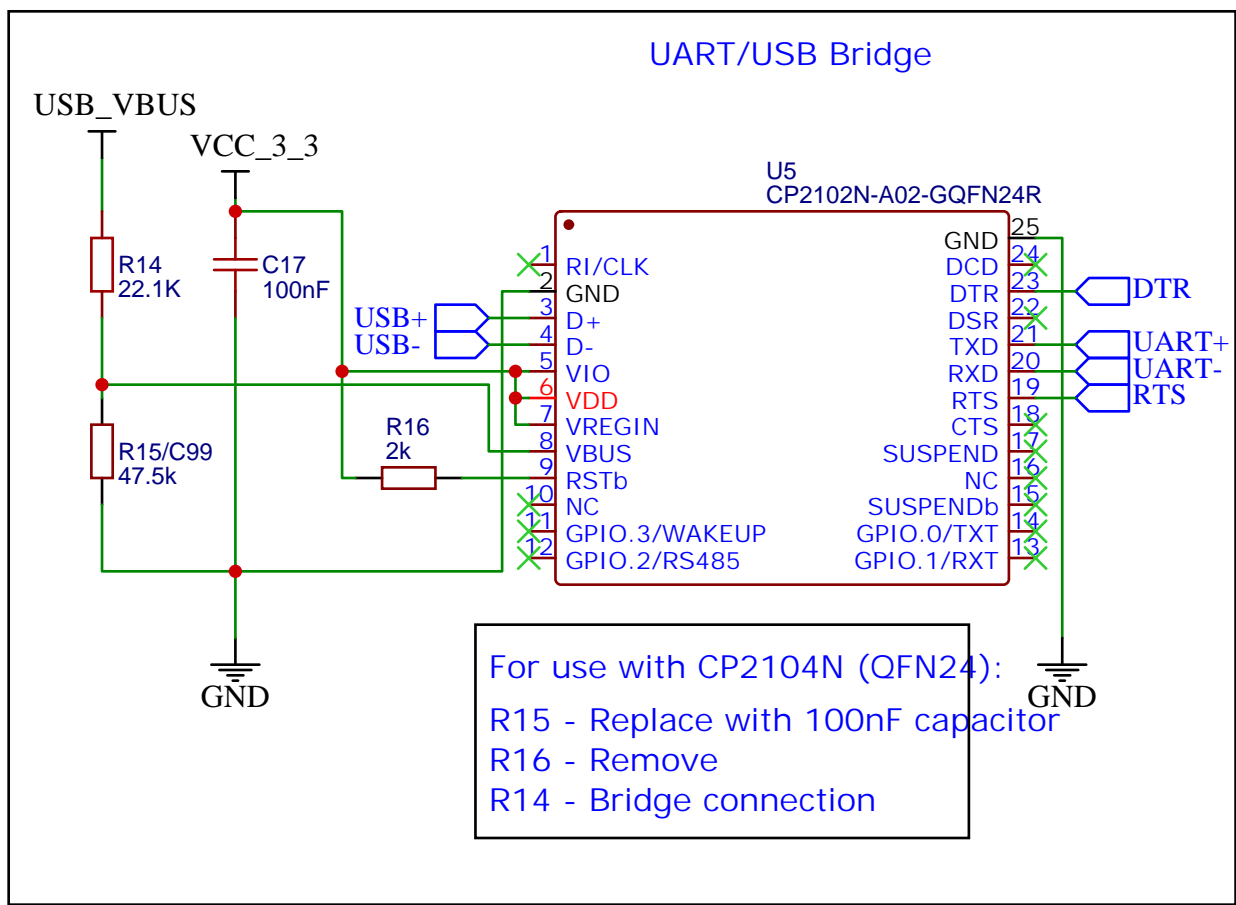
REV: 1.1

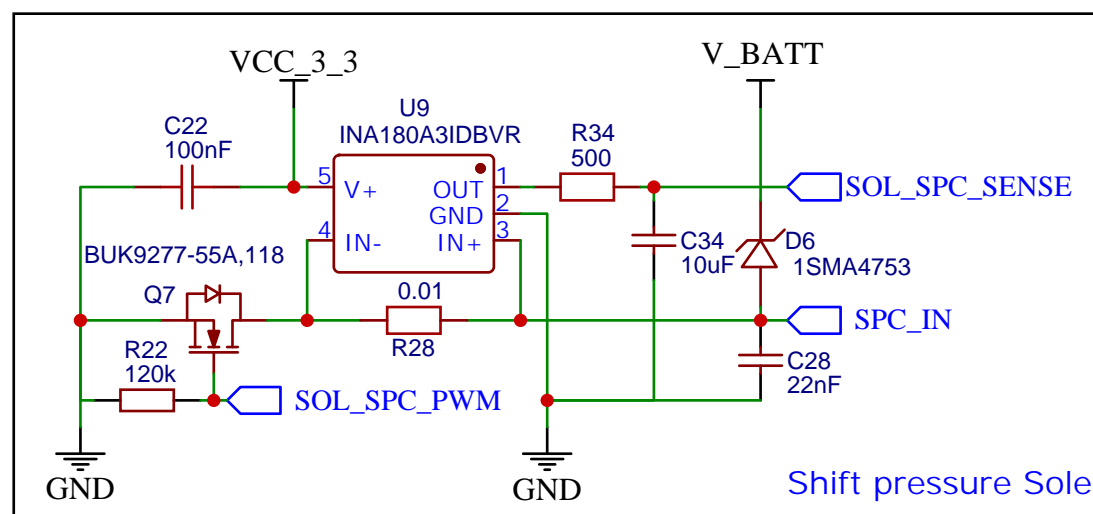
EasyEDA

Company: rnd-ash@github.com

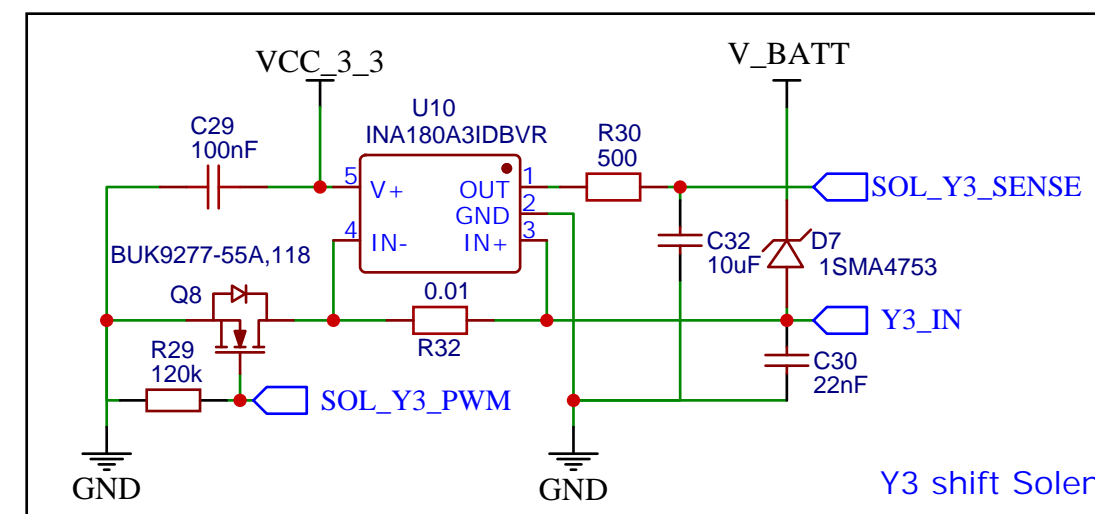
Sheet: 2/5

Date: 2022-06-16 Drawn By: Ashcon Mohseninia

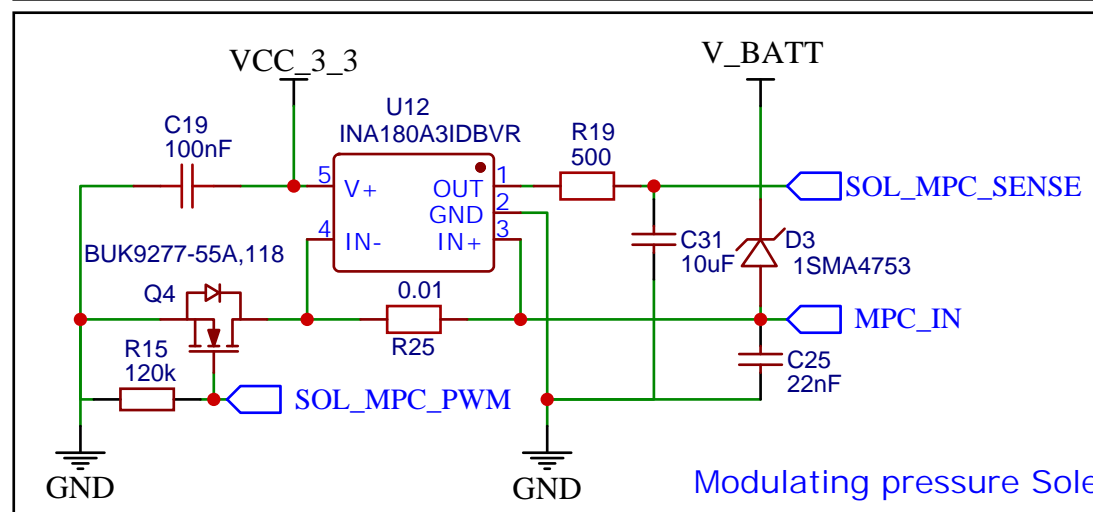




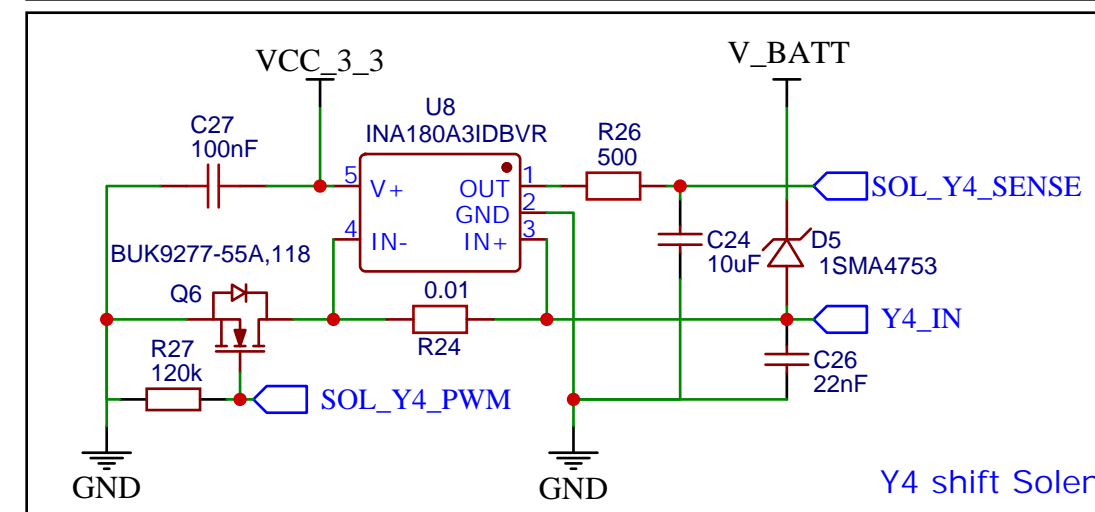
Shift pressure Solenoid



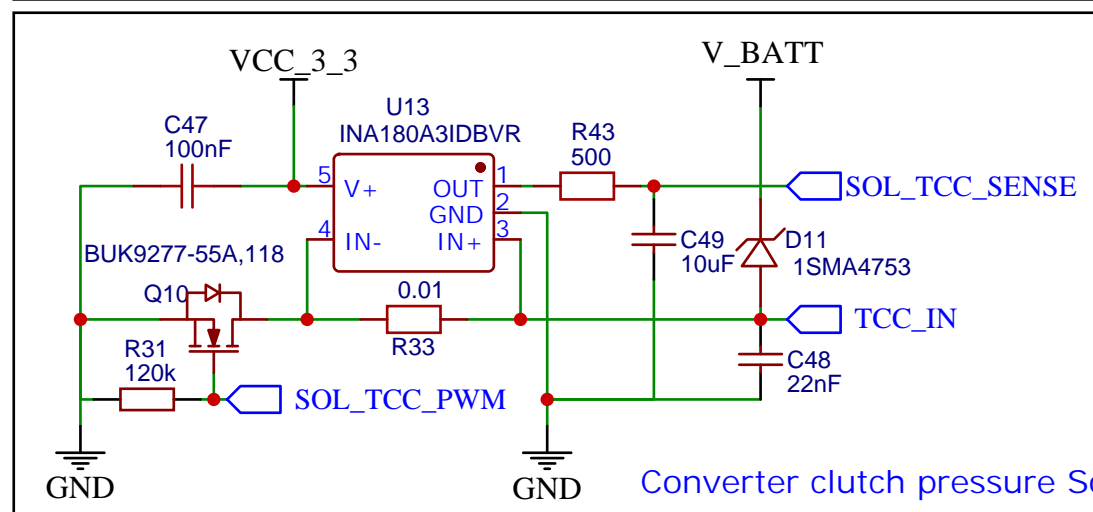
Y3 shift Solenoid



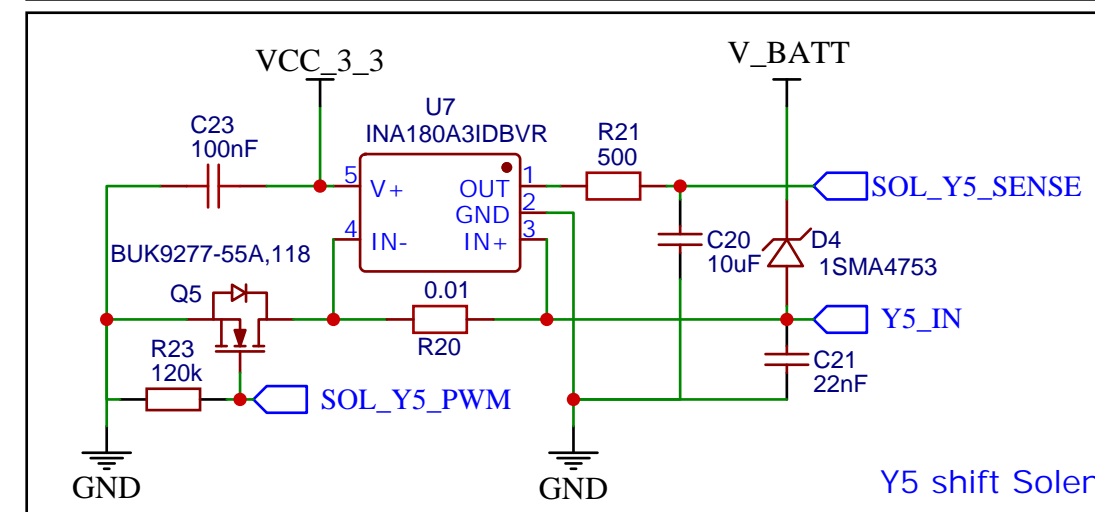
Modulating pressure Solenoid



Y4 shift Solenoid



Converter clutch pressure Solenoid

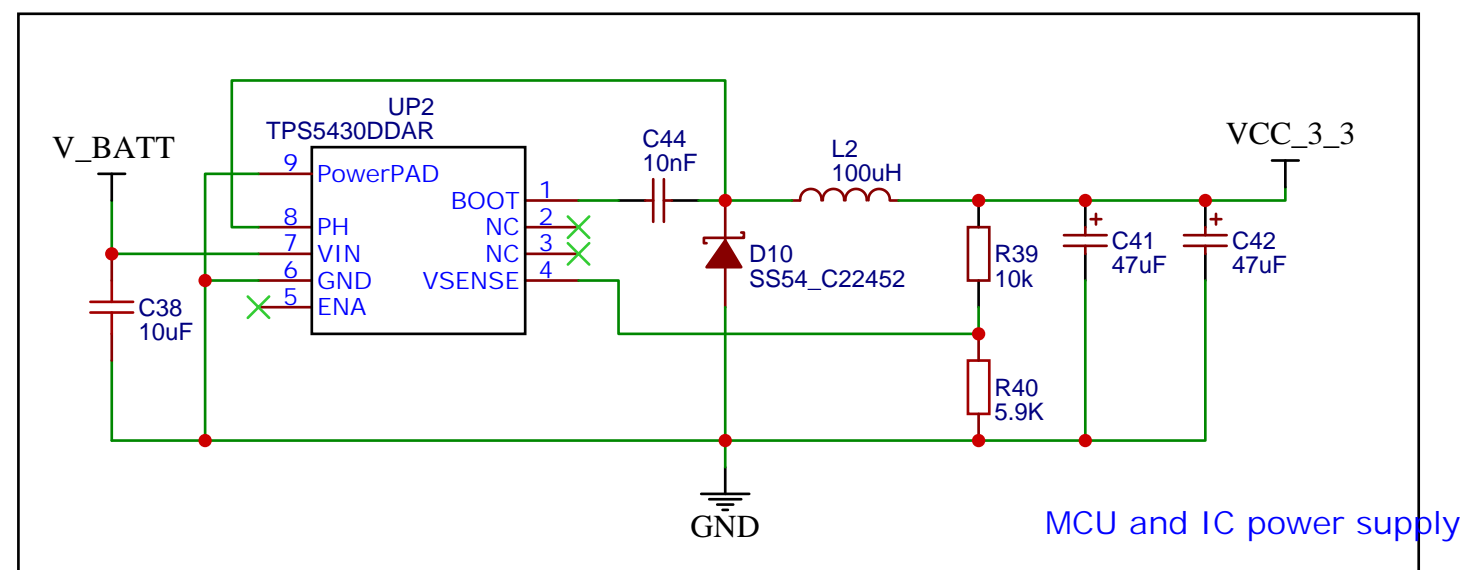
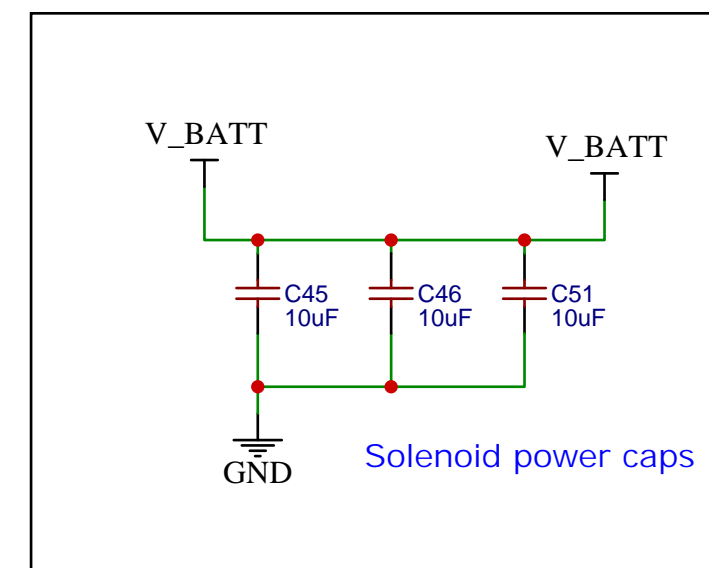
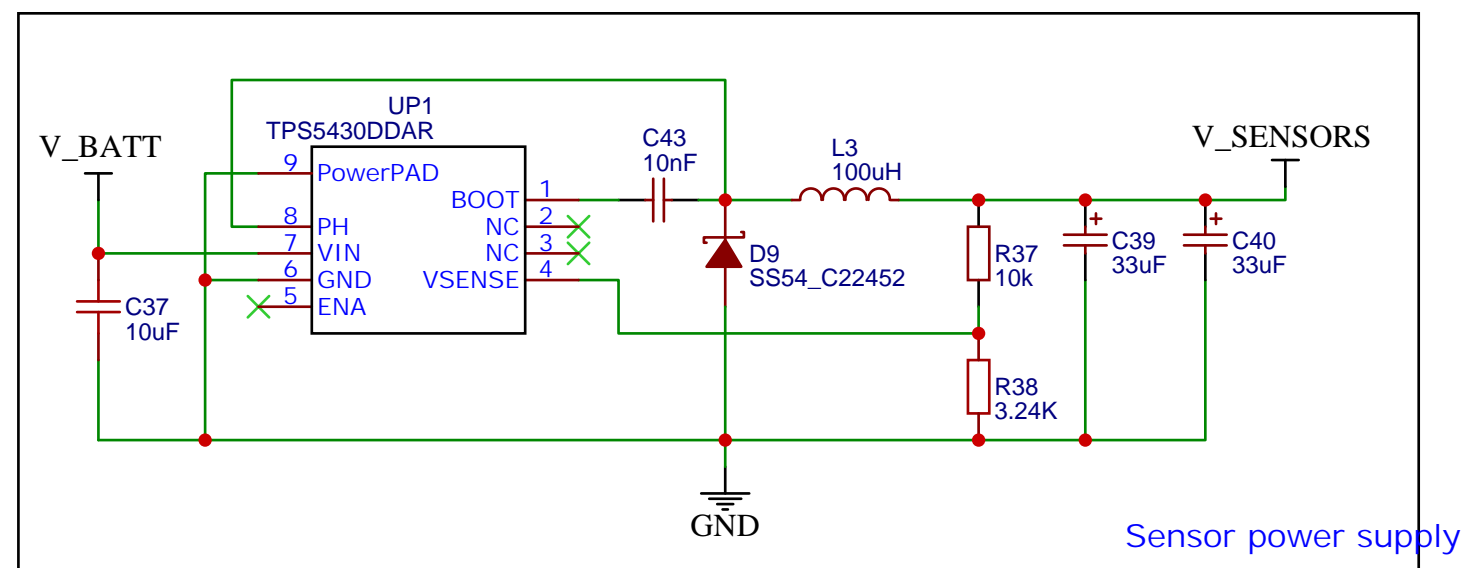


Y5 shift Solenoid

NOTES:

1. All 22nF capacitors should be close to TCM connector

TITLE: Solenoids		REV: 1.1
EasyEDA	Company: rnd-ash@github.com	Sheet: 4/5
	Date: 2022-06-16	Drawn By: Ashcon Mohseninia



MCU and IC power supply

NOTES:

1. Solenoid power caps - Place the 3 caps close to solenoid power line
2. C39, C40, C41 and C42 are all tantalum capacitors
3. R37, R38, R39 and R40 should all be 1%

TITLE: Power delivery		REV: 1.1
EasyEDA	Company: rnd-ash@github.com	Sheet: 5/5
	Date: 2022-06-16	Drawn By: Ashcon Mohseninia