

```

; MGH8060GAL
CHIP MGH8060GAL GAL22V10

; 1 2 3 4 5 6 7 8 9 10 11 12
CLK D0 D1 D2 D3 D4 D5 D6 D7 A10 A11 GND

F0 TX /nIO /nROM /nRAM HFG DFG A15 A14 A13 A12 VCC
;13 14 15 16 17 18 19 20 21 22 23 24

EQUATIONS
; create A12-A15 using registered outputs
A12 := D0
A13 := D1
A14 := D2
A15 := D3

; flags
DFG := D6
HFG := D7

; invert serial output
TX = /F0

; /ROM Enable signal
nROM = /A15 * /A14 * /A13 * /A12 * /A11
+ /A15 * /A14 * /A13 * A12
+ /A15 * /A14 * A13 * A12
+ A15 * /A14 * /A13
+ A15 * /A14 * A13 * A12
+ A15 * A14 * /A13
+ A15 * A14 * A13

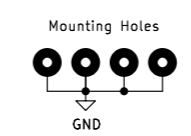
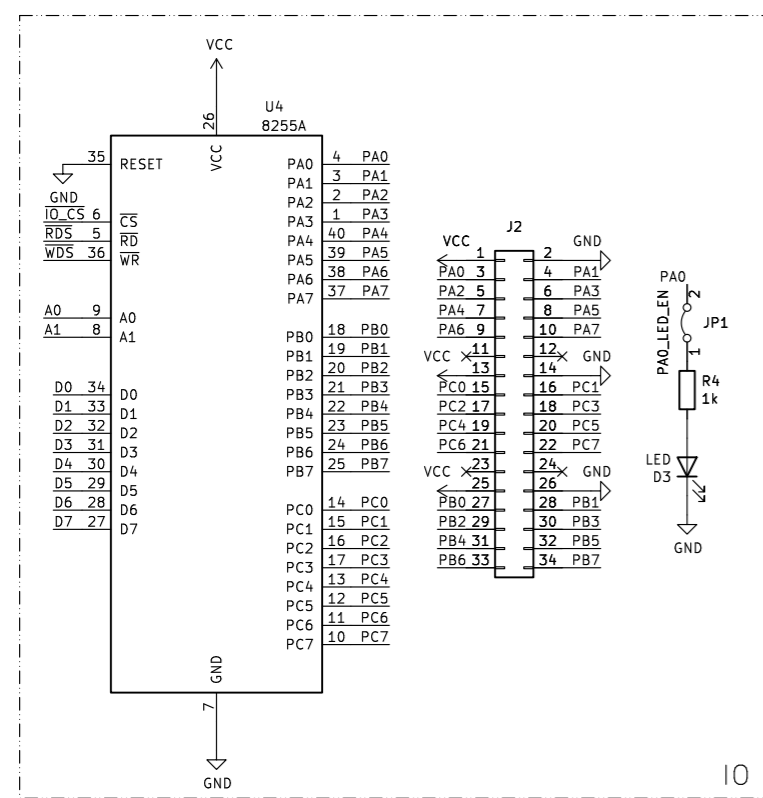
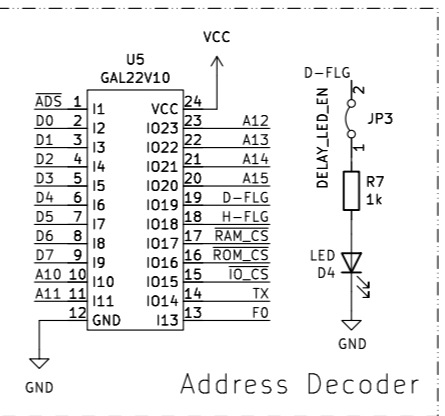
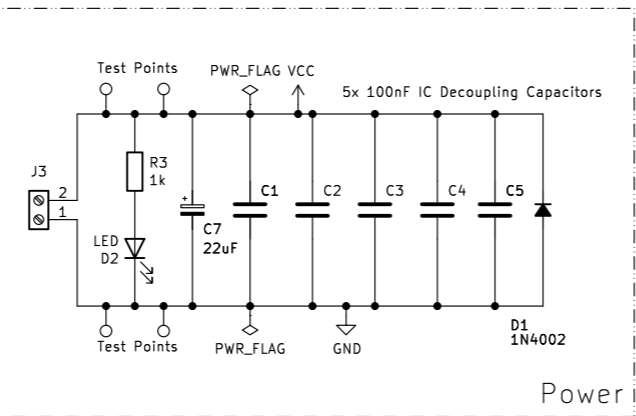
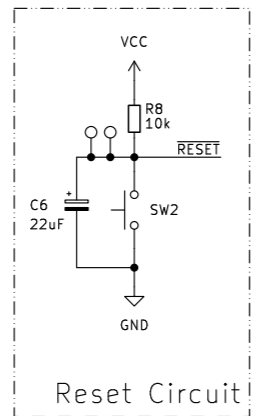
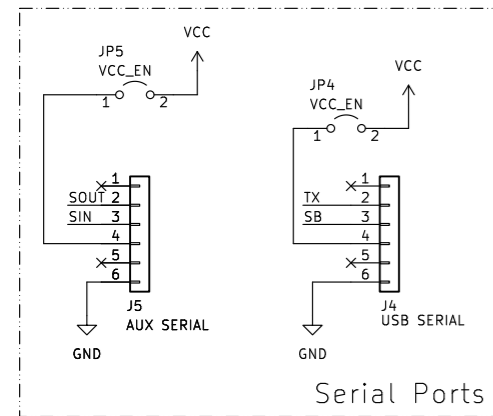
; /RAM enable signal
nRAM = /A15 * /A14 * /A13 * /A12 * A11
+ /A15 * /A14 * A13 * /A12
+ /A15 * A14 * /A13
+ /A15 * A14 * A13

; /IO enable signal
nIO = A15 * /A14 * A13 * /A12

;PAGE A15 A14 A13 A12 A11 Type (Range) Equation
-----
; 0 0 0 0 0 ROM (0000-07FF) /A15 * /A14 * /A13 * /A12 * /A11
; 0 0 0 0 1 RAM (0800-0FFF) /A15 * /A14 * /A13 * /A12 * A11
; 1 0 0 0 1 X ROM (1000-1FFF) /A15 * /A14 * /A13 * A12
; 2 0 0 1 0 X RAM (2000-2FFF) /A15 * /A14 * A13 * /A12
; 3 0 0 1 1 X ROM (3000-3FFF) /A15 * /A14 * A13 * A12
; 4 0 1 0 0 X RAM (4000-4FFF) /A15 * A14 * /A13 * /A12
; 5 0 1 0 1 X RAM (5000-5FFF) /A15 * A14 * /A13 * A12
; 6 0 1 1 0 X RAM (6000-6FFF) /A15 * A14 * A13 * /A12
; 7 0 1 1 1 X RAM (7000-7FFF) /A15 * A14 * A13 * A12
; 8 1 0 0 0 X ROM (8000-8FFF) A15 * /A14 * /A13 * /A12
; 9 1 0 0 1 X ROM (9000-9FFF) A15 * /A14 * /A13 * A12
; A 1 0 1 0 X IO (A000-AFFF) A15 * /A14 * A13 * /A12
; B 1 0 1 1 X ROM (B000-BFFF) A15 * /A14 * A13 * A12
; C 1 1 0 0 X ROM (C000-CFFF) A15 * A14 * /A13 * /A12
; D 1 1 0 1 X ROM (D000-DFFF) A15 * A14 * /A13 * A12
; E 1 1 1 0 X ROM (E000-EFFF) A15 * A14 * A13 * /A12
; F 1 1 1 1 X ROM (F000-FFFF) A15 * A14 * A13 * A12

```

GAL EQU File



MGH
MyGeekyHobby

MyGeekyHobby.com
 Sheet: /
 File: mgh8060.kicad_sch
Title: INS8060GAL Single-board Computer
 Size: A3 Date: 2023-12-25 Rev: 1.4
 KiCad E.D.A. eeschema 7.0.10 Id: 1/1