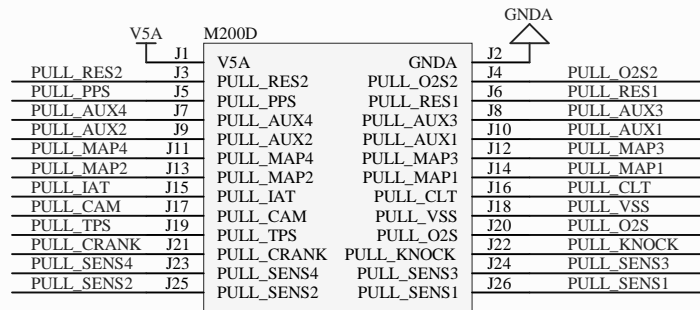


Module:mcu/0.1	M101C				
DIN1	S1	V5	GND	S2	S2
DIN3	S5	IN_D1	IN_D2	S4	DIN2
VIGN	S7	IN_D3	IN_D4	S6	DIN4
AIN2	S9	VIGN	IN_SENS1	S8	AIN1
AIN4	S11	IN_SENS2	IN_SENS3	S10	AIN3
AIN24	S13	IN_SENS4	IN_KNOCK	S12	AIN6
AIN19	S15	IN_CRANK	IN_VSS	S14	DIN5
AIN17	S17	IN_CAM	IN_O2S	S16	AIN13
AIN14	S19	IN_IAT	IN_CLT	S18	AIN11
AIN10	S21	IN_MAP1	IN_AUX1	S20	AIN9
AIN8	S23	IN_MAP2	IN_AUX2	S22	AIN15
AIN21	S25	IN_MAP3	IN_AUX3	S24	AIN23
AIN20	S27	IN_PP5	IN_RES1	S26	AIN22
AIN18	S29	IN_PP5	IN_RES2	S28	AIN7
AIN16	S31	IN_PP5	IN_RES2	S30	AIN12
	S33	V5A	GND	S32	S32

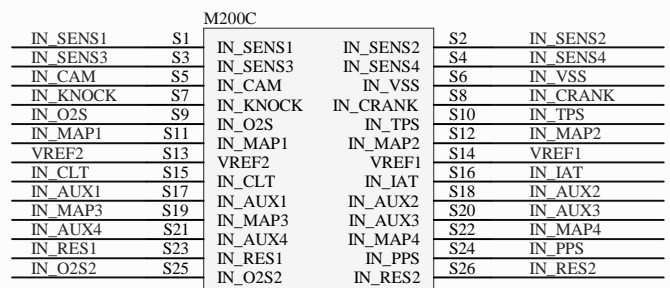
Module:mcu/0.1	M101B				
SPI_SCK	E1	SPI_SCK	SPI_MISO	E2	SPI_MISO
SPI_MOSI	E3	SPI_MOSI	SPI_CS1	E4	SPI_CS1
SPI_CS2	E5	SPI_CS2	OUT_IO1	E6	OUT_IO1
OUT_IO2	E7	OUT_IO2	OUT_IO3	E8	OUT_IO3
OUT_IO4	E9	OUT_IO4	OUT_IO5	E10	OUT_IO5
OUT_IO6	E11	OUT_IO6	OUT_IO7	E12	OUT_IO7
OUT_IO8	E13	OUT_IO8	OUT_IO9	E14	OUT_PWM1
OUT_PWM1	E15	OUT_PWM1	OUT_PWM2	E16	OUT_PWM2
OUT_PWM2	E17	OUT_PWM2	OUT_PWM3	E18	OUT_PWM3
OUT_PWM3	E19	OUT_PWM3	OUT_PWM4	E20	OUT_PWM4
OUT_PWM4	E21	OUT_PWM4	OUT_PWM5	E22	OUT_PWM5
OUT_PWM5	E23	OUT_PWM5	OUT_PWM6	E24	OUT_PWM6
OUT_PWM6	E25	OUT_PWM6	OUT_PWM7	E26	OUT_PWM7
OUT_PWM7	E27	OUT_PWM7	OUT_PWM8	E28	OUT_PWM8
OUT_PWM8	E29	OUT_PWM8	OUT_PWM9	E30	OUT_PWM9
OUT_PWM9	E31	OUT_PWM9	OUT_PWM10	E32	OUT_PWM10
OUT_PWM10	E33	OUT_PWM10	OUT_PWM11	E34	OUT_PWM11

Module:mcu/0.1	M101A				
CAN_TX	N1	CAN_TX	CAN_RX	N2	CAN_RX
CAN_RX	N3	CAN_RX	CAN_TX	N4	CAN_TX
UART_RX	N5	UART_RX	UART_TX	N6	UART_TX
IO1	N7	IO1	IO2	N8	IO2
IO2	N9	IO2	IO3	N10	IO3
IO3	N11	IO3	IO4	N12	IO4
IO4	N13	IO4	IO5	N14	IO5
IO5	N15	IO5	IO6	N16	IO6
IO6	N17	IO6	IO7	N18	IO7
IO7	N19	IO7	IO8	N20	IO8
IO8	N21	IO8	IO9	N22	IO9
IO9	N23	IO9	IO10	N24	IO10
IO10	N25	IO10	IO11	N26	IO11
IO11	N27	IO11	IO12	N28	IO12
IO12	N29	IO12	IO13	N30	IO13

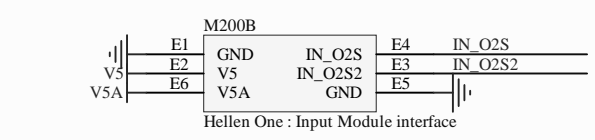
U105	STM32F427IGT6				
PE2	PH7	PE3	PH6	PE4	PH5
PE5	PH4	PE6	PH3	PE7	PH2
PE8	PH1	PE9	PH0	PE10	PH0
PE11	PH1	PE12	PH2	PE13	PH3
PE14	PH4	PE15	PH5	PE16	PH6
PE17	PH7	PE18	PH8	PE19	PH9
PE20	PH10	PE21	PH11	PE22	PH12
PE23	PH13	PE24	PH14	PE25	PH15
PE26	PH16	PE27	PH17	PE28	PH18
PE29	PH19	PE30	PH20	PE31	PH21
PE32	PH22	PE33	PH23	PE34	PH24
PE35	PH25	PE36	PH26	PE37	PH27
PE38	PH28	PE39	PH29	PE40	PH30
PE41	PH31	PE42	PH32	PE43	PH33
PE44	PH34	PE45	PH35	PE46	PH36
PE47	PH37	PE48	PH38	PE49	PH39
PE50	PH40	PE51	PH41	PE52	PH42
PE53	PH43	PE54	PH44	PE55	PH45
PE56	PH46	PE57	PH47	PE58	PH48
PE59	PH49	PE60	PH50	PE61	PH51
PE62	PH52	PE63	PH53	PE64	PH54
PE65	PH55	PE66	PH56	PE67	PH57
PE68	PH58	PE69	PH59	PE70	PH60
PE71	PH61	PE72	PH62	PE73	PH63
PE74	PH64	PE75	PH65	PE76	PH66
PE77	PH67	PE78	PH68	PE79	PH69
PE80	PH70	PE81	PH71	PE82	PH72
PE83	PH73	PE84	PH74	PE85	PH75
PE86	PH76	PE87	PH77	PE88	PH78
PE89	PH79	PE90	PH80	PE91	PH81
PE92	PH82	PE93	PH83	PE94	PH84
PE95	PH85	PE96	PH86	PE97	PH87
PE98	PH88	PE99	PH89	PE100	PH90
PE101	PH91	PE102	PH92	PE103	PH93
PE104	PH94	PE105	PH95	PE106	PH96
PE107	PH97	PE108	PH98	PE109	PH99
PE110	PH100	PE111	PH101	PE112	PH102
PE113	PH103	PE114	PH104	PE115	PH105
PE116	PH106	PE117	PH107	PE118	PH108
PE119	PH109	PE120	PH110	PE121	PH111
PE122	PH112	PE123	PH113	PE124	PH114
PE125	PH115	PE126	PH116	PE127	PH117
PE128	PH118	PE129	PH119	PE130	PH120
PE131	PH121	PE132	PH122	PE133	PH123
PE134	PH124	PE135	PH125	PE136	PH126
PE137	PH127	PE138	PH128	PE139	PH129
PE140	PH130	PE141	PH131	PE142	PH132
PE143	PH133	PE144	PH134	PE145	PH135
PE146	PH136	PE147	PH137	PE148	PH138
PE149	PH139	PE150	PH140	PE151	PH141
PE152	PH142	PE153	PH143	PE154	PH144
PE155	PH145	PE156	PH146	PE157	PH147
PE158	PH148	PE159	PH149	PE160	PH150
PE161	PH151	PE162	PH152	PE163	PH153
PE164	PH154	PE165	PH155	PE166	PH156
PE167	PH157	PE168	PH158	PE169	PH159
PE170	PH160	PE171	PH161	PE172	PH162
PE173	PH163	PE174	PH164	PE175	PH165
PE176	PH166	PE177	PH167	PE178	PH168
PE179	PH169	PE180	PH170	PE181	PH171
PE182	PH172	PE183	PH173	PE184	PH174
PE185	PH175	PE186	PH176	PE187	PH177
PE188	PH178	PE189	PH179	PE190	PH180
PE191	PH181	PE192	PH182	PE193	PH183
PE194	PH184	PE195	PH185	PE196	PH186
PE197	PH187	PE198	PH188	PE199	PH189
PE200	PH190	PE201	PH191	PE202	PH192
PE203	PH193	PE204	PH194	PE205	PH195
PE206	PH196	PE207	PH197	PE208	PH198
PE209	PH199	PE210	PH200	PE211	PH201
PE212	PH202	PE213	PH203	PE214	PH204
PE215	PH205	PE216	PH206	PE217	PH207
PE218	PH208	PE219	PH209	PE220	PH210
PE221	PH211	PE222	PH212	PE223	PH213
PE224	PH214	PE225	PH215	PE226	PH216
PE227	PH217	PE228	PH218	PE229	PH219
PE230	PH220	PE231	PH221	PE232	PH222
PE233	PH223	PE234	PH224	PE235	PH225
PE236	PH226	PE237	PH227	PE238	PH228
PE239	PH229	PE240	PH230	PE241	PH231
PE242	PH232	PE243	PH233	PE244	PH234
PE245	PH235	PE246	PH236	PE247	PH237
PE248	PH238	PE249	PH239	PE250	PH240
PE251	PH241	PE252	PH242	PE253	PH243
PE254	PH244	PE255	PH245	PE256	PH246
PE257	PH247	PE258	PH248	PE259	PH249
PE260	PH250	PE261	PH251	PE262	PH252
PE263	PH253	PE264	PH254	PE265	PH255
PE266	PH256	PE267	PH257	PE268	PH258
PE269	PH259	PE270	PH260	PE271	PH261
PE272	PH262	PE273	PH263	PE274	PH264
PE275	PH265	PE276	PH266	PE277	PH267
PE278	PH268	PE279	PH269	PE280	PH270
PE281	PH271	PE282	PH272	PE283	PH273
PE284	PH274	PE285	PH275	PE286	PH276
PE287	PH277	PE288	PH278	PE289	PH279
PE290	PH280	PE291	PH281	PE292	PH282
PE293	PH283	PE294	PH284	PE295	PH285
PE296	PH286	PE297	PH287	PE298	PH288
PE299	PH289	PE300	PH290	PE301	PH291
PE302	PH292	PE303	PH293	PE304	PH294
PE305	PH295	PE306	PH296	PE307	PH297
PE308	PH298	PE309	PH299	PE310	PH300
PE311	PH301	PE312	PH302	PE313	PH303
PE314	PH304	PE315	PH305	PE316	PH306
PE317	PH307	PE318	PH308	PE319	PH309
PE320	PH310	PE321	PH311	PE322	PH312
PE323	PH313	PE324	PH314	PE325	PH315
PE326	PH316	PE327	PH317	PE328	PH318
PE329	PH319	PE330	PH320	PE331	PH321
PE332	PH322	PE333	PH323	PE334	PH324
PE335	PH325	PE336	PH326	PE337	PH327
PE338	PH328	PE339	PH329	PE340	PH330
PE341	PH331	PE342	PH332	PE343	PH333
PE344	PH334	PE345	PH335	PE346	PH336
PE347	PH337	PE348	PH338	PE349	PH339
PE350	PH340	PE351	PH341	PE352	PH342
PE353	PH343	PE354	PH344	PE355	PH345
PE356	PH346	PE357	PH347	PE358	PH348
PE359	PH349	PE360	PH350	PE361	PH351
PE362	PH352	PE363	PH353	PE364	PH354
PE365	PH355	PE366	PH356	PE367	PH357
PE368	PH358	PE369	PH359	PE370	PH360
PE371	PH361	PE372	PH362	PE373	PH363
PE374	PH364	PE375	PH365	PE376	PH366
PE377	PH367	PE378	PH368	PE379	PH369
PE380	PH370	PE381	PH371	PE382	PH372
PE383	PH373	PE384	PH374	PE385	PH375
PE386	PH376	PE387	PH377	PE388	PH378
PE389	PH379	PE390	PH380	PE391	PH381
PE392	PH382	PE393	PH383	PE394	PH384
PE395	PH385	PE396	PH386	PE397	PH387
PE398	PH388	PE399	PH389	PE400	PH390
PE401	PH391	PE402	PH392	PE403	PH393
PE404	PH394	PE405	PH395	PE406	PH396
PE407	PH397	PE408	PH398	PE409	PH399
PE410	PH400	PE411	PH401	PE412	PH402
PE413	PH403	PE414	PH404	PE415	PH405
PE416	PH406	PE417	PH407	PE418	PH408
PE419	PH409	PE420	PH410	PE421	PH411
PE422	PH412	PE423	PH413	PE424	PH414
PE425	PH415	PE426	PH416	PE427	PH417
PE428	PH418	PE429	PH419	PE430	PH420
PE431	PH421	PE432	PH422	PE433	PH423
PE434	PH424	PE435	PH425	PE436	PH426
PE437	PH427	PE438	PH428	PE439	PH429
PE440	PH430	PE441	PH431	PE442	PH432
PE443	PH433	PE444	PH434	PE445	PH435
PE446	PH436	PE447	PH437	PE448	PH438
PE449	PH439	PE450	PH440	PE451	PH441
PE452	PH442	PE453	PH443	PE454	PH444
PE455	PH445	PE456	PH446	PE457	PH447
PE458	PH448	PE459	PH449	PE460	PH450
PE461	PH451	PE462	PH452	PE463	PH453
PE464	PH454	PE465	PH455	PE466	PH456
PE467	PH457	PE468	PH458	PE469	PH459
PE470	PH460	PE471	PH461	PE472	PH462
PE473	PH463	PE474	PH464	PE475	PH465
PE476	PH466	PE477	PH467	PE478	PH468
PE479	PH469	PE480	PH470	PE481	PH471
PE482	PH472	PE483	PH473	PE484	PH474
PE485	PH475	PE486	PH476	PE487</	



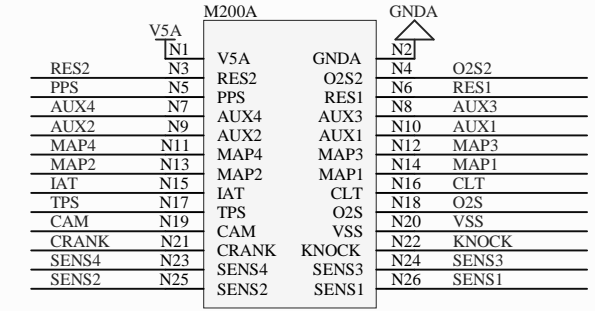
Hellen One : Input Module interface



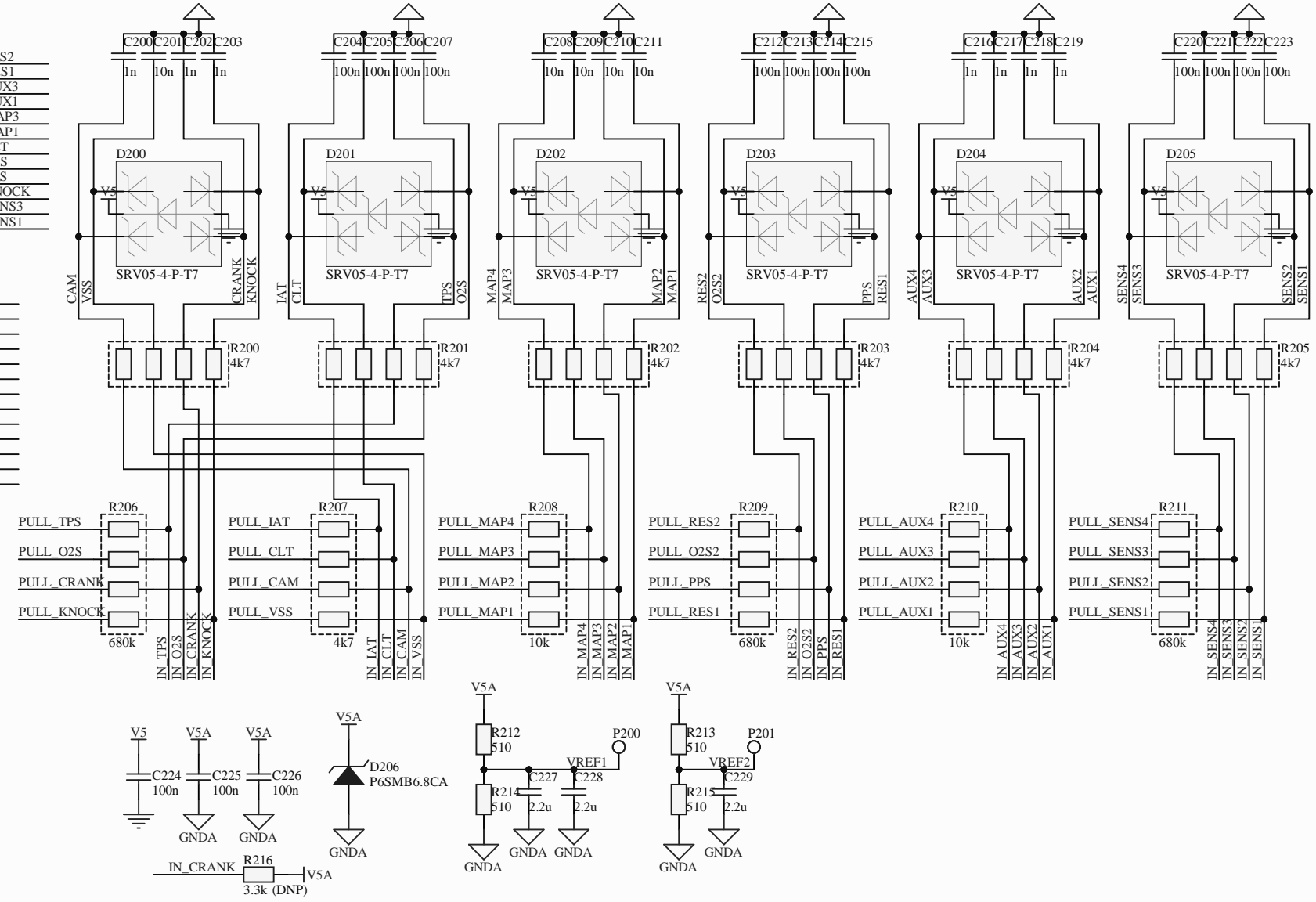
Hellen One : Input Module interface

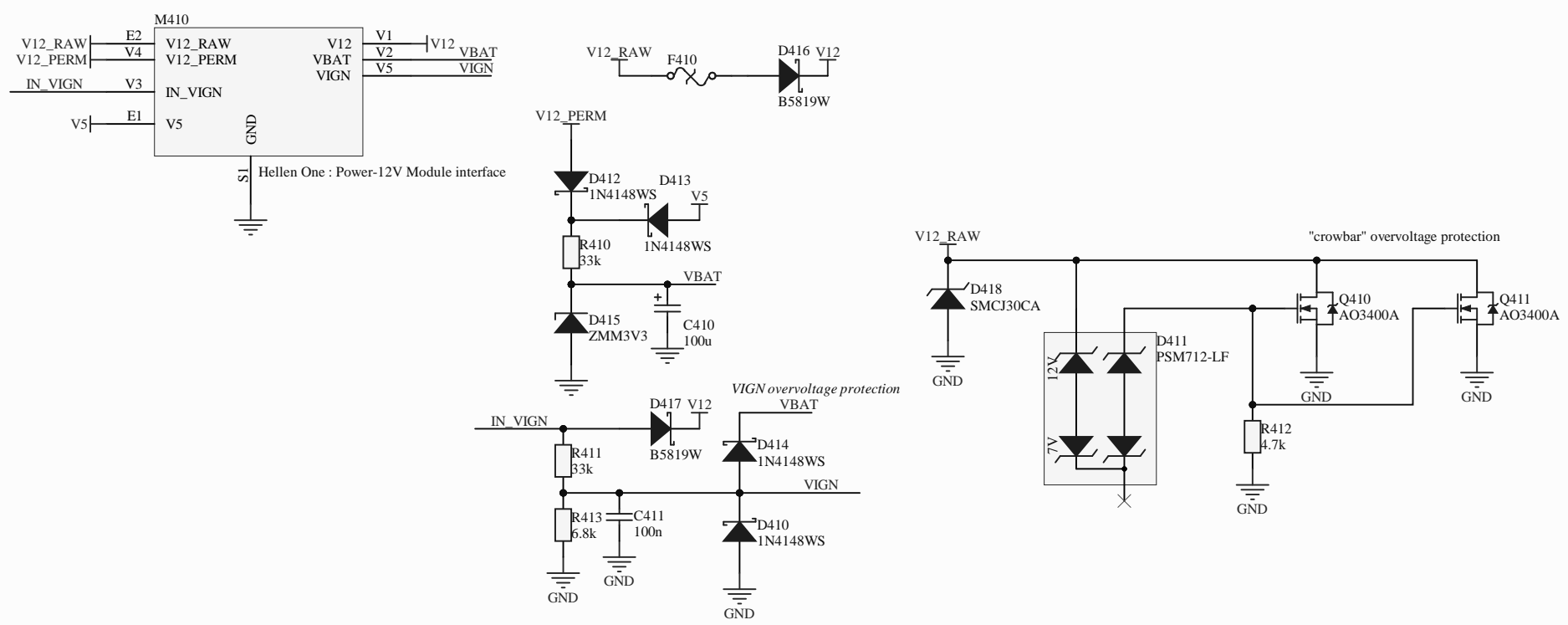


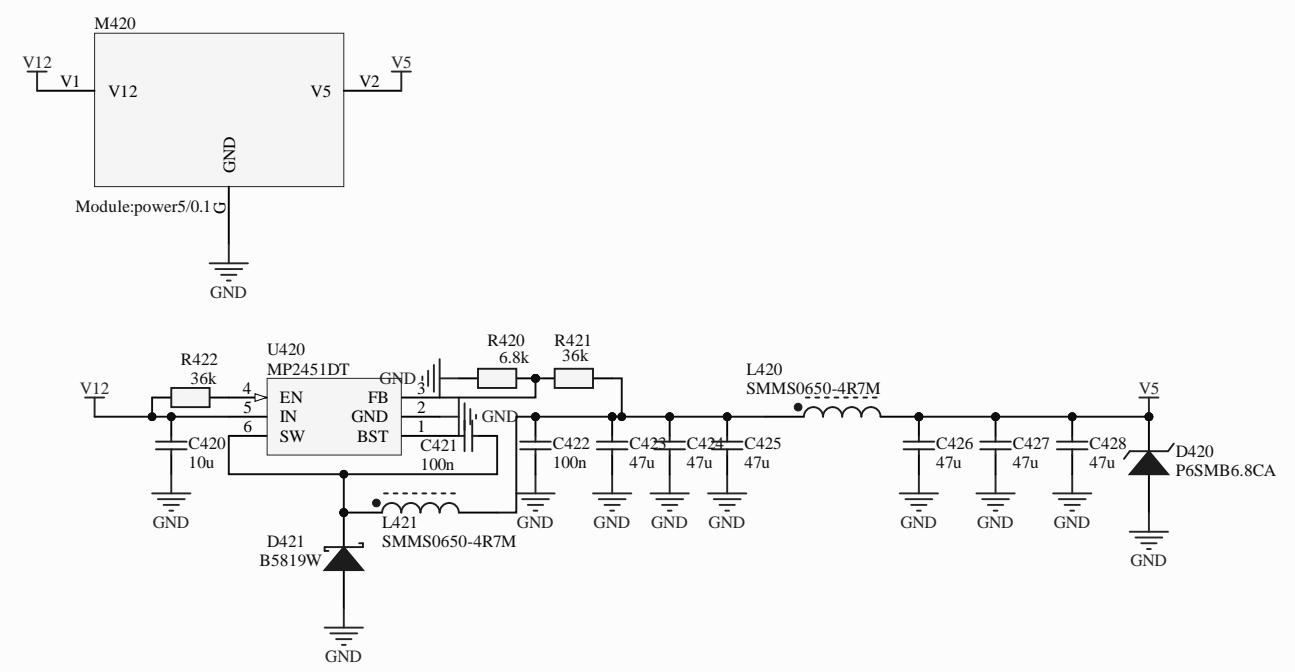
Hellen One : Input Module interface

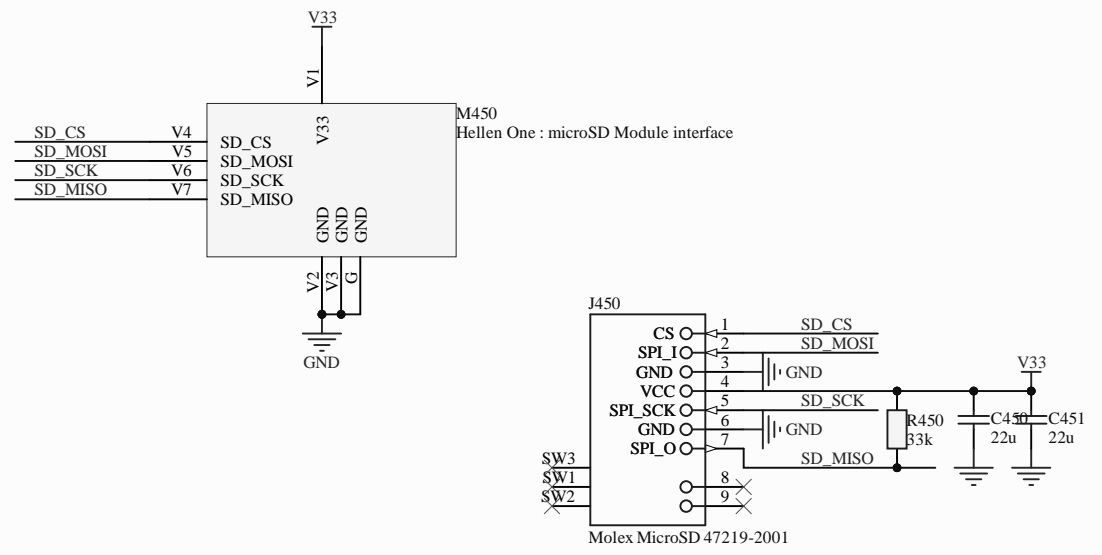


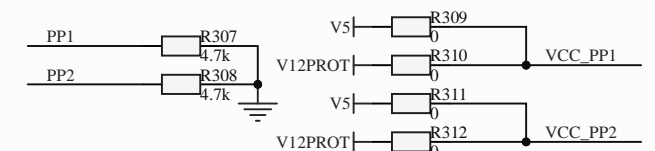
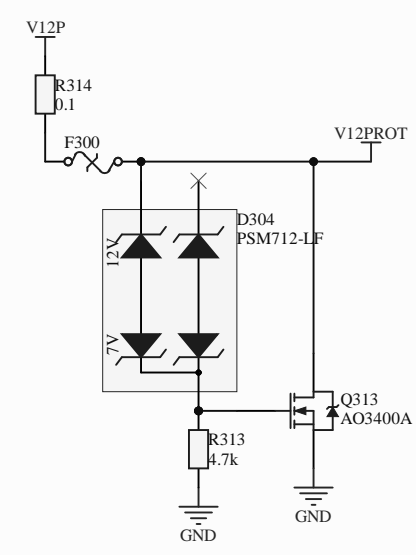
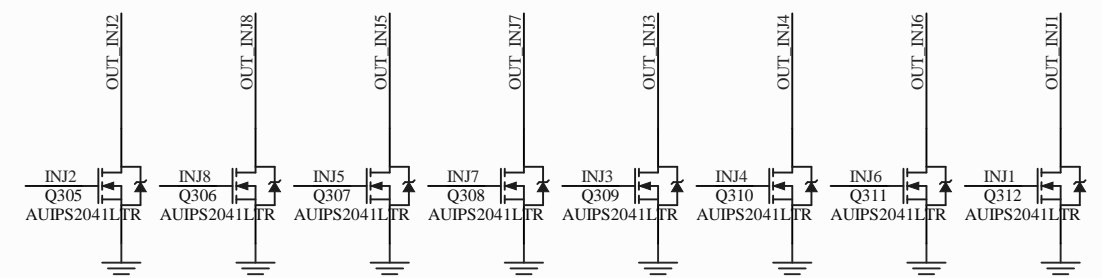
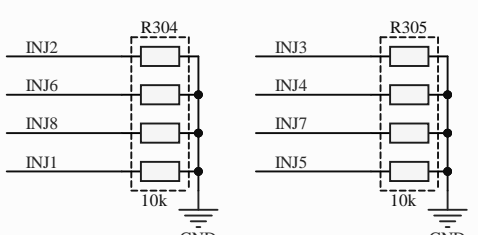
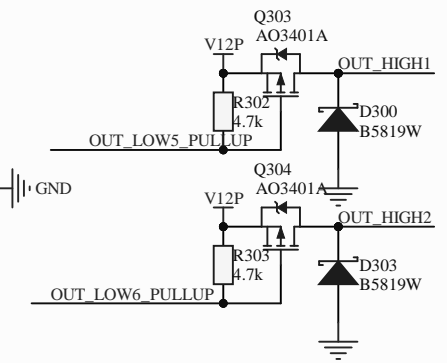
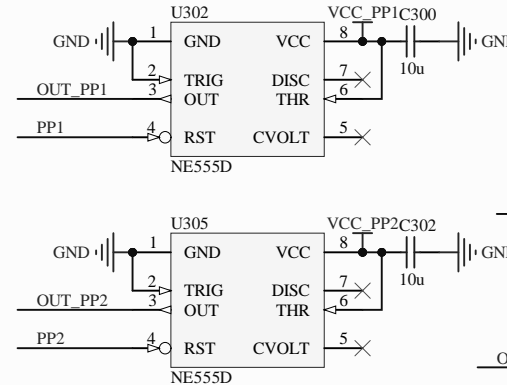
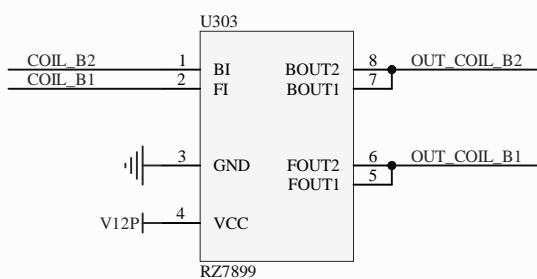
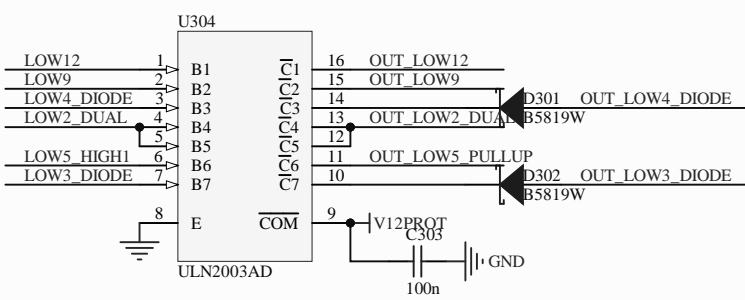
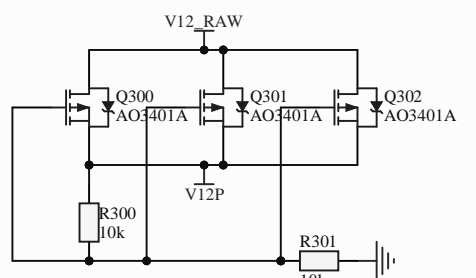
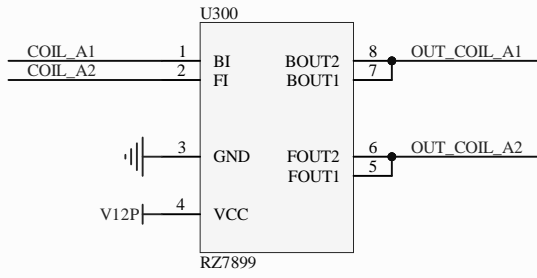
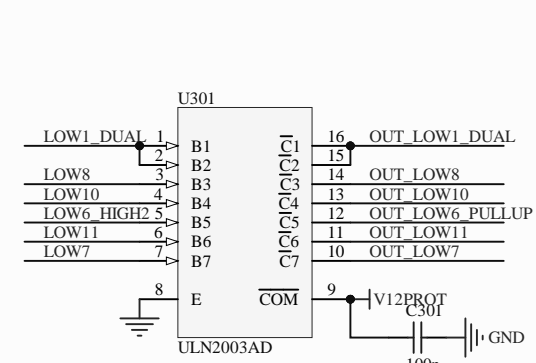
Hellen One : Input Module interface



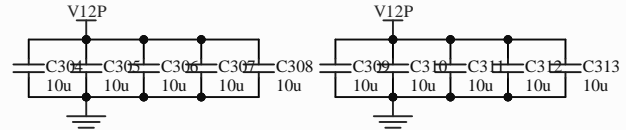






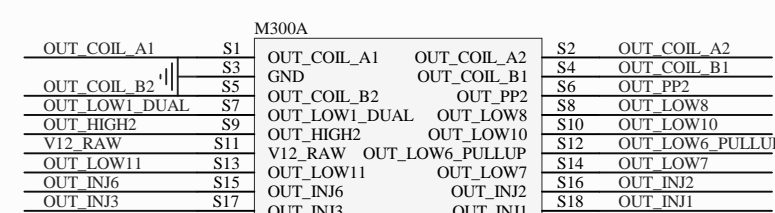


*These can be removed in the board compilation file



M300B		M300A	
OUT_LOW12	W1	OUT_COIL_A1	S1
OUT_LOW4_DIODE	W3	GND	S3
OUT_INJ4	W5	OUT_COIL_B2	S5
OUT_INJ8	W7	OUT_LOW1_DUAL	S7
OUT_LOW3_DIODE	W9	OUT_HIGH2	S9
INJ8	W11	V12_RAW	S11
INJ6	W13	OUT_LOW11	S13
INJ4	W15	OUT_INJ6	S15
INJ2	W17	OUT_INJ3	S17
LOW8	W19	OUT_COIL_A1	S2
INJ2	W21	OUT_COIL_A2	S4
LOW4_DIODE	W23	OUT_COIL_B1	S6
LOW9	W25	OUT_PP2	S8
LOW12	W27	OUT_LOW8	S10
COIL_B1	W29	OUT_LOW10	S12
COIL_B2	W31	OUT_LOW6_PULLUP	S14
COIL_A1	W33	OUT_LOW7	S16
COIL_A2	W35	OUT_INJ2	S18
COIL_A1	W37	OUT_INJ1	
LOW2_DUAL	W39		
LOW10			
LOW11			
LOW1_DUAL			
LOW3_DIODE			

Hellen One : Output Module interface



Hellen One : Output Module interface

