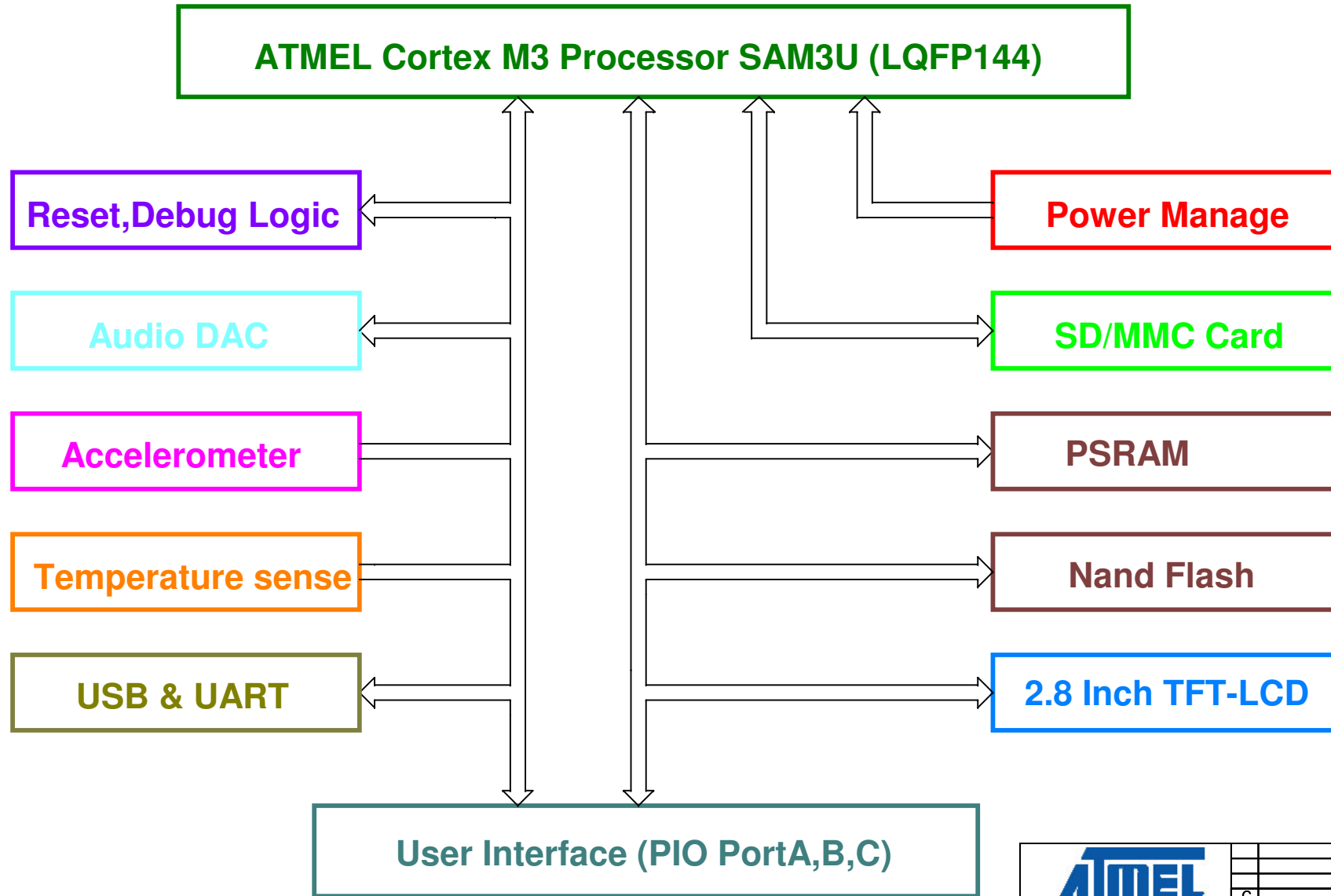


SAM3U-EK RevB Block Diagram



		C	PP	XX-XXX-XX		
		B	ZXL	19-MAY-09		
SAM3U-EK RevC		A	INIT EDIT	ZXL	03-FEB-09	XXX XX-XXX-XX
Block Diagram		REV	MODIF.	DES.	DATE	VER. DATE
		SCALE 1/1				REV. SHEET
						C 1/15

This agreement is our property. Reproduction and publication without our written authorization shall expose offender to legal proceedings.

1. SAM3U-EK Revision HISTORY

Rev: A

SCH: SAM3U-EK RevA Data: 2008/12

Note: Original Released

Rev: B


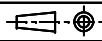
SCH: SAM3U-EK RevB Data: 2009/04

Note: Final Released

2. Explain of Schematics

(1) Resistance Unit: "K" is
"K|,"

(2) "DNP" means the component "R" is "!" is not populated by default

					
C		PP	XX-XXX-XX		
B		ZXL	19-MAY-09		
A	INIT EDIT	ZXL	03-FEB-09	XXX	XX-XXX-XX
REV	MODIF.	DES.	DATE	VER.	DATE
SAM3U-EK RevC		SCALE 1/1		REV. C	SHEET 2/15
Design notes					
<small>The agreement is our property. Reproduction and publication without our written authorization shall expose offender to legal proceedings.</small>					

{7,8,9,10,11,12,14,15} PA[31:0]

PB[31:0] {5,6,7,11,13,14,15}

MN1A
SAM3U

PA0	109
PA1	111
PA2	113
PA3	115
PA4	117
PA5	119
PA6	121
PA7	123
PA8	128
PA9	130
PA10	132
PA11	133
PA12	134
PA13	87
PA14	88
PA15	91
PA16	93
PA17	95
PA18	99
PA19	100
PA20	101
PA21	102
PA22	77
PA23	103
PA24	105
PA25	106
PA26	107
PA27	64
PA28	45
PA29	46
PA30	78
PA31	48

PA0/WKUP0
PA1/WKUP1
PA2/WKUP2
PA3/CK
PA4/CDA
PA5/DA0
PA6/DA1
PA7/DA2
PA8/DA3
PA9/TWD0
PA10/TWCK0
PA11/URXD
PA12/UTXD
PA13/MISO
PA14/MOSI
PA15/SPCK
PA16/NPCS0
PA17/WKUP7
PA18/WKUP8
PA19/WKUP9
PA20/TXD1
PA21/RXD1
PA22/RTS1
PA23/CTS2
PA24/WKUP11
PA25/WKUP12
PA26/TD
PA27/PCK0
PA28/TK
PA29/PWMH1
PA30/TF
PA31/RF

PB0/PWMH0
PB1/PWMH1
PB2/PWMH2
PB3/AD12BAD2
PB4/AD12BAD3
PB5/AD1
PB6/D15
PB7/A0/NBS0
PB8/A1
PB9/D0
PB10/D1
PB11/D2
PB12/D3
PB13/D4
PB14/D5
PB15/D6
PB16/D7
PB17/NANDOE
PB18/NANDWE
PB19/NRD
PB20/NCS0
PB21/A21/NANDALE
PB22/A22/NANDCLE
PB23/NWR0/NWE
PB24/NANDRYD
PB25/D8
PB26/D9
PB27/D10
PB28/D11
PB29/D12
PB30/D13
PB31/D14

53	PB0
55	PB1
57	PB2
79	PB3
80	PB4
65	PB5
66	PB6
67	PB7
68	PB8
31	PB9
30	PB10
59	PB11
61	PB12
62	PB13
29	PB14
97	PB15
96	PB16
26	PB17
25	PB18
24	PB19
23	PB20
21	PB21
20	PB22
19	PB23
15	PB24
14	PB25
13	PB26
12	PB27
10	PB28
8	PB29
6	PB30
5	PB31

{5,6,7,10,11,14,15} PC[31:0]

PC[31:0] {5,6,7,10,11,14,15}

PC0	110
PC1	112
PC2	114
PC3	116
PC4	118
PC5	120
PC6	122
PC7	124
PC8	129
PC9	131
PC10	89
PC11	92
PC12	94
PC13	98
PC14	28
PC15	81

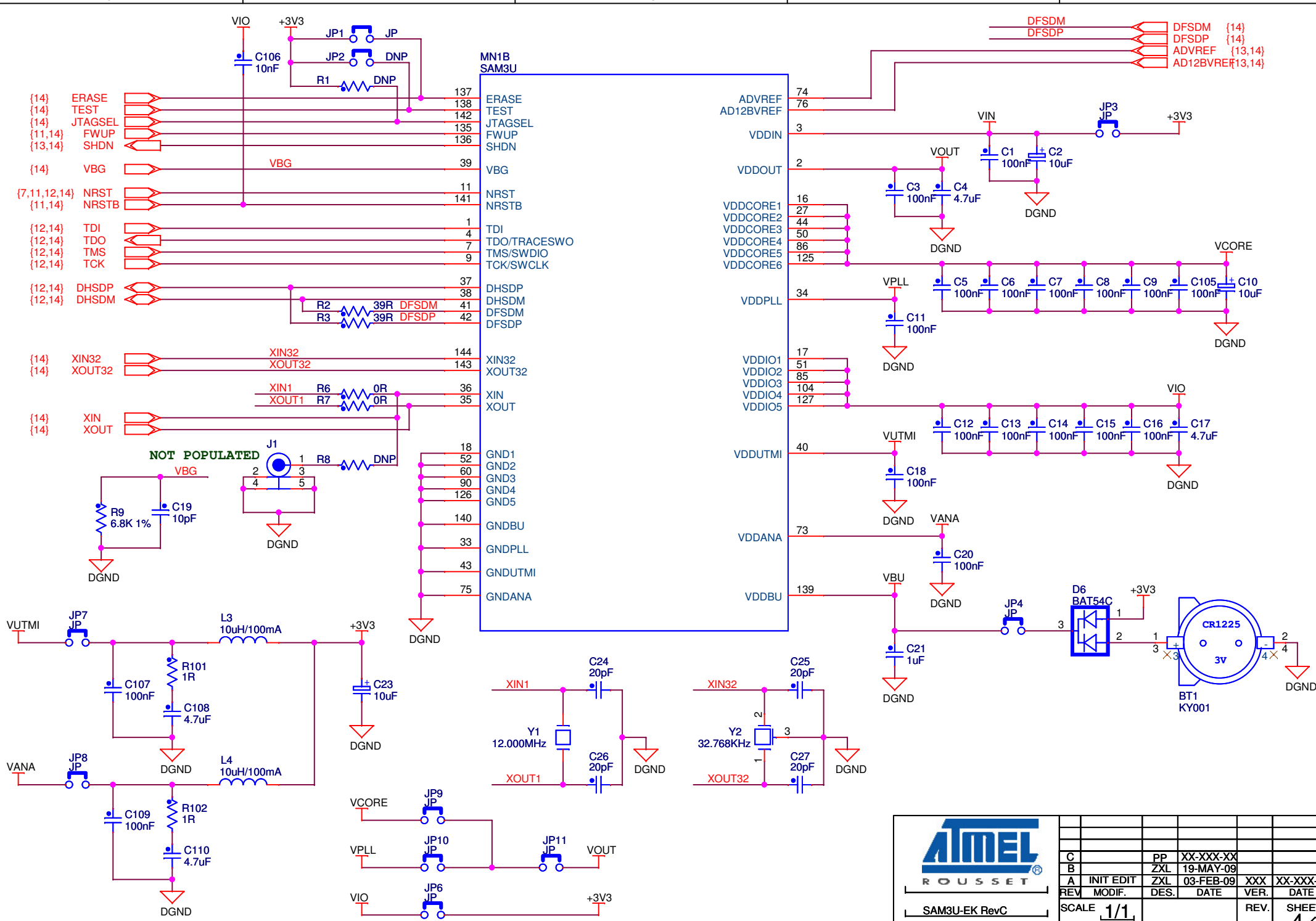
PC0/A2
PC1/A3
PC2/A4
PC3/A5
PC4/A6
PC5/A7
PC6/A8
PC7/A9
PC8/A10
PC9/A11
PC10/A12
PC11/A13
PC12/NCS1
PC13/RXD3
PC14/NPCS2
PC15/NWR1/NBS1

PC16/NCS2
PC17/AD12BAD6
PC18/AD12BAD7
PC19/NPCS1
PC20/A14
PC21/A15
PC22/A16
PC23/A17
PC24/A18
PC25/A19
PC26/PWMH2
PC27/A23
PC28/DA4
PC29/DA5
PC30/DA6
PC31/DA7

82	PC16
83	PC17
84	PC18
32	PC19
108	PC20
22	PC21
47	PC22
49	PC23
54	PC24
56	PC25
58	PC26
63	PC27
69	PC28
70	PC29
71	PC30
72	PC31

C		PP	XX-XXX-XX			
B		ZXL	19-MAY-09			
A	INIT EDIT	ZXL	03-FEB-09	XXX	XX-XXX-XX	
REV	MODIF.	DES.	DATE	VER.	DATE	
SCALE 1/1				C	SHEET 3/15	
SAM3U-EK RevC						
SAM3U PIO						

This agreement is our property. Reproduction and publication without our written authorization shall expose offender to legal proceedings.

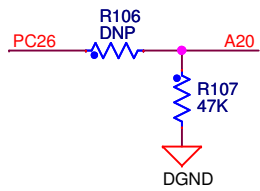
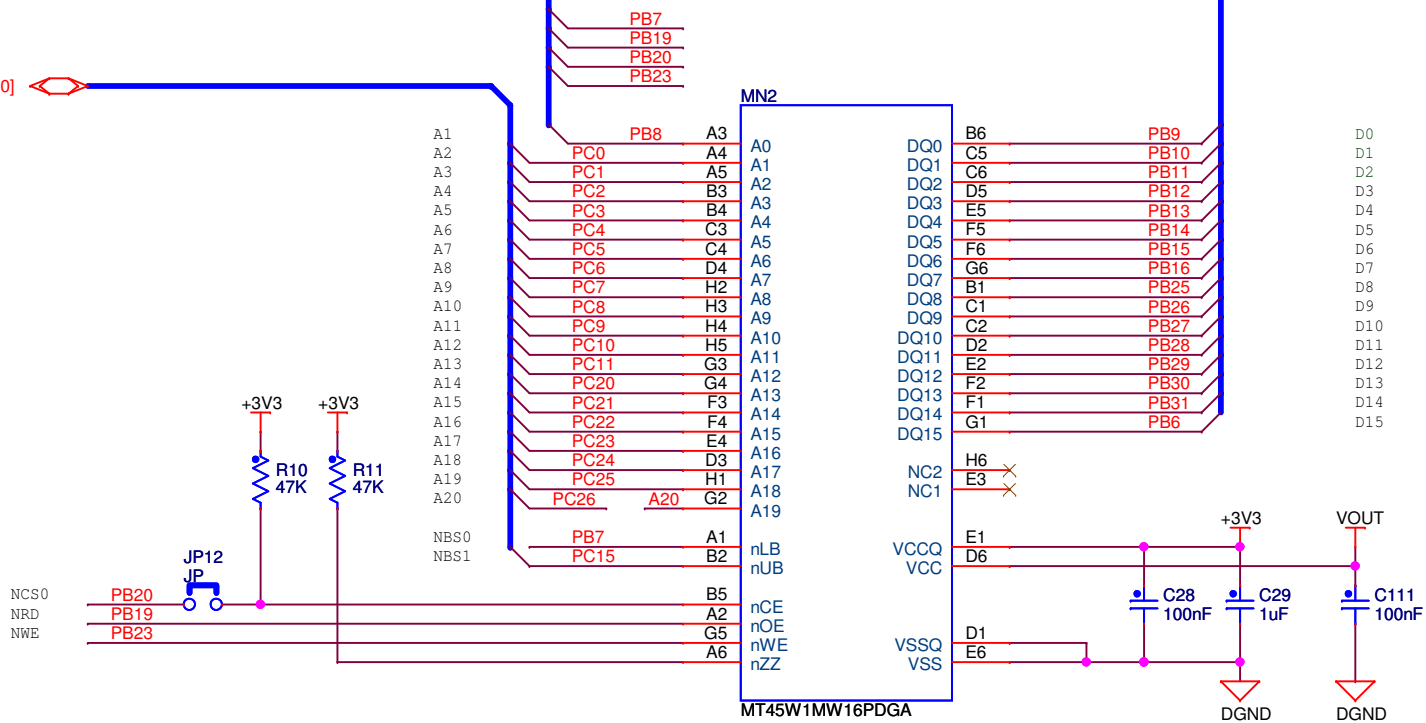


		C	PP	XX-XXX-XX		
		B	ZXL	19-MAY-09		
A	INIT EDIT	ZXL	03-FEB-09	XXX	XX-XXX-XX	
REV	MODIF.	DES.	DATE	VER.	DATE	
SAM3U-EK RevC		SCALE 1/1		REV. C	SHEET 4/15	
SAM3U CPU						

The agreement is our property. Reproduction and publication without our written authorization shall expose offender to legal proceedings.

{3,6,7,11,13,14,15} PB[31:0]

{3,6,7,10,11,14,15} PC[31:0]



C		PP	XX-XXX-XX		
B		ZXL	19-MAY-09		
A	INIT EDIT	ZXL	03-FEB-09	XXX	XX-XXX-XX
REV	MODIF.	DES.	DATE	VER.	DATE
SCALE 1/1				REV. C	SHEET 5/15
SAM3U-EK RevC		EBI Memory 1MB PSRAM			

{3,5,7,11,13,14,15} PB[31:0]

{3,5,7,10,11,14,15} PC[31:0]

NANDRDY
NANDOE

NANDCLE
NANDALE
NANDWE

NCS1

PC12

+3V3

+3V3

+3V3

+3V3

+3V3

DGND

DGND


MN3

MT29F2G08AADWP

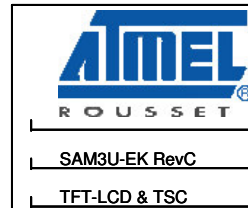
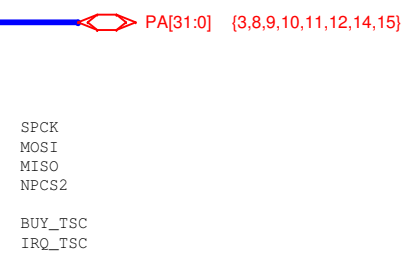
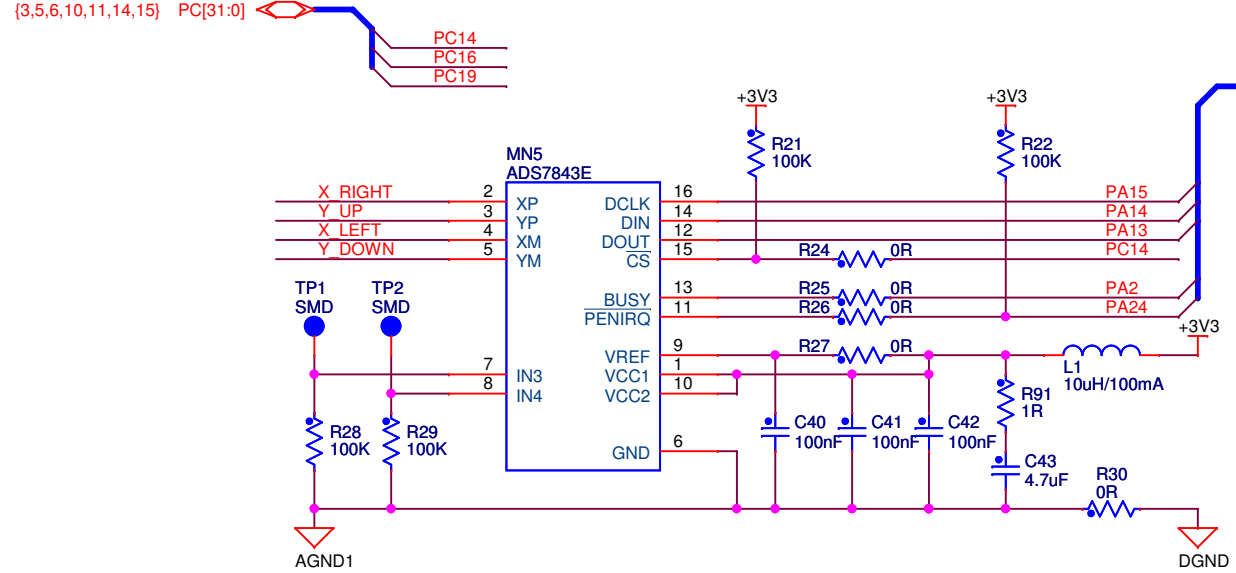
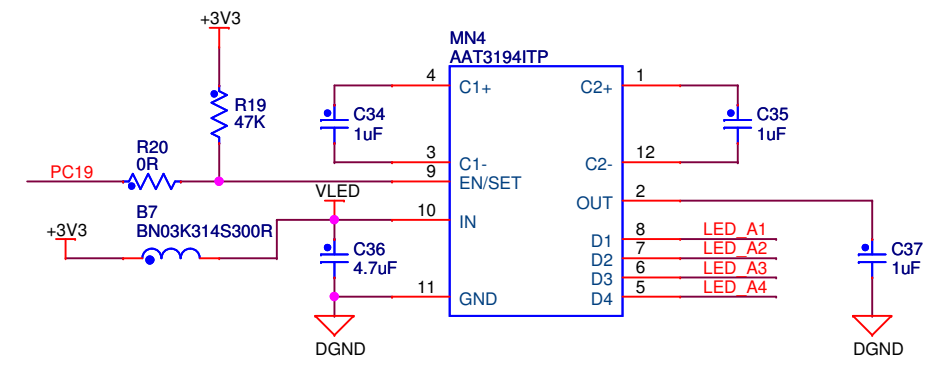
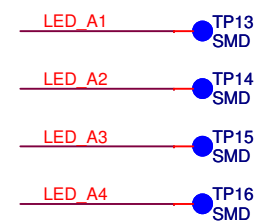
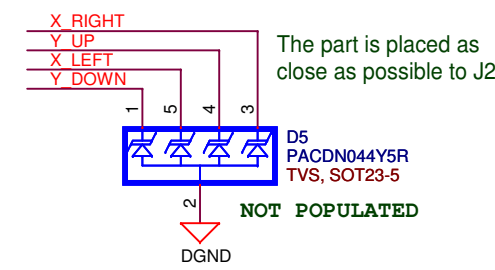
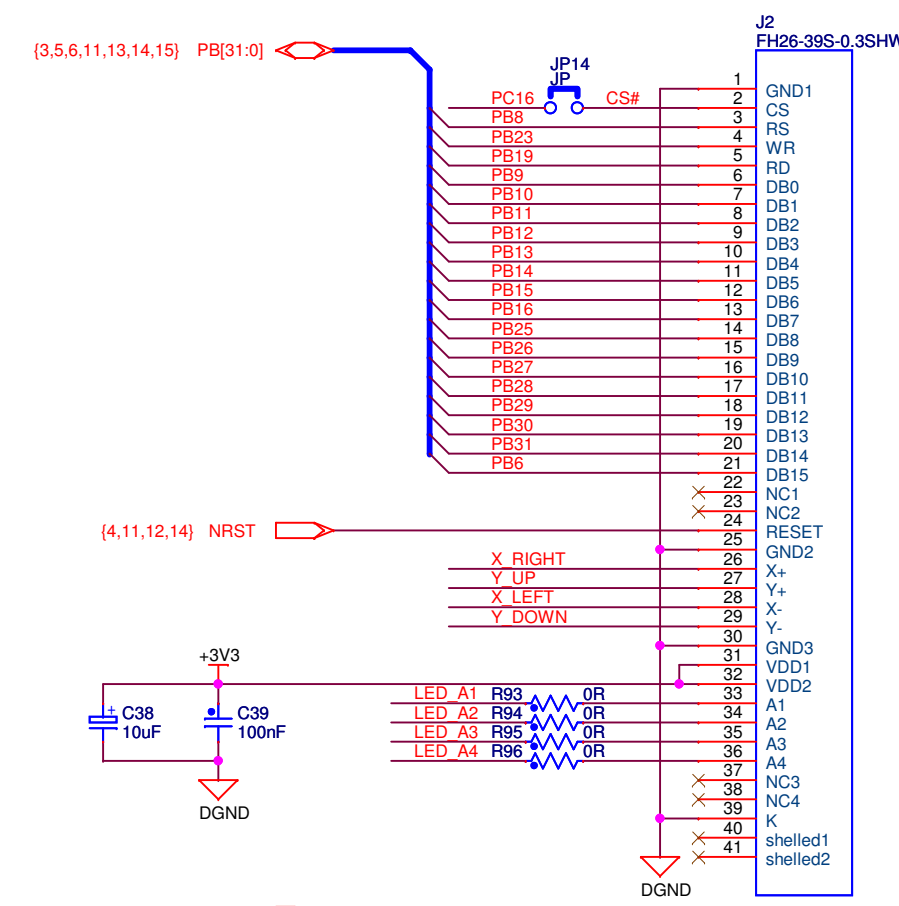
Optional 16bits DATA BUS
With MT29F2G16AADWP Micron

D15
D14
D13
D7
D6
D5
D4
D12
D11
D3
D2
D1
D0
D10
D9
D8

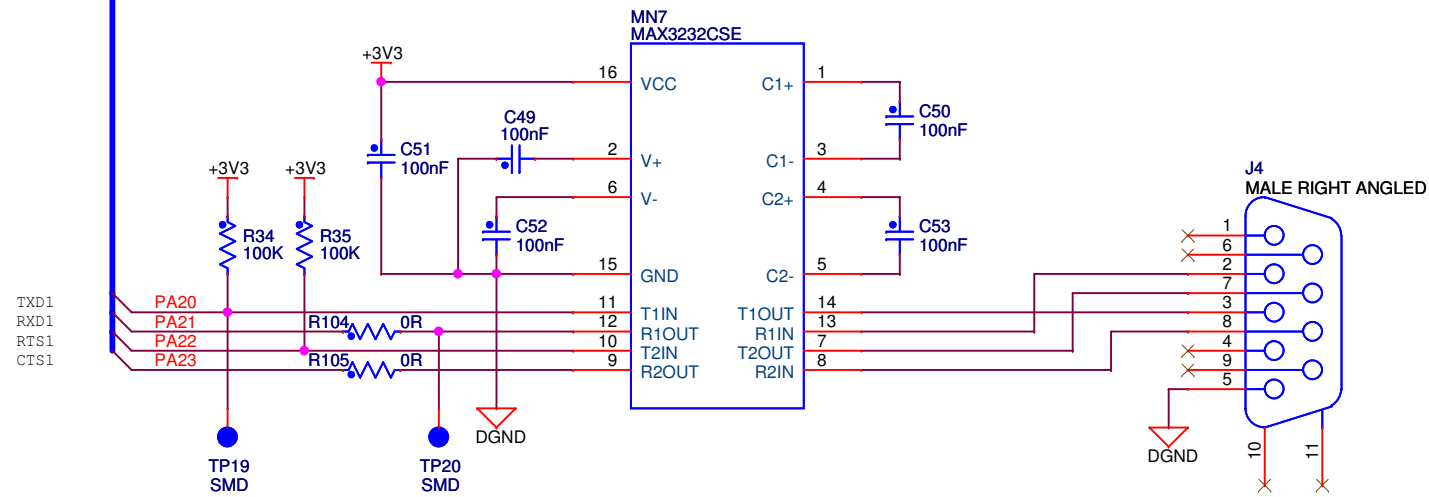
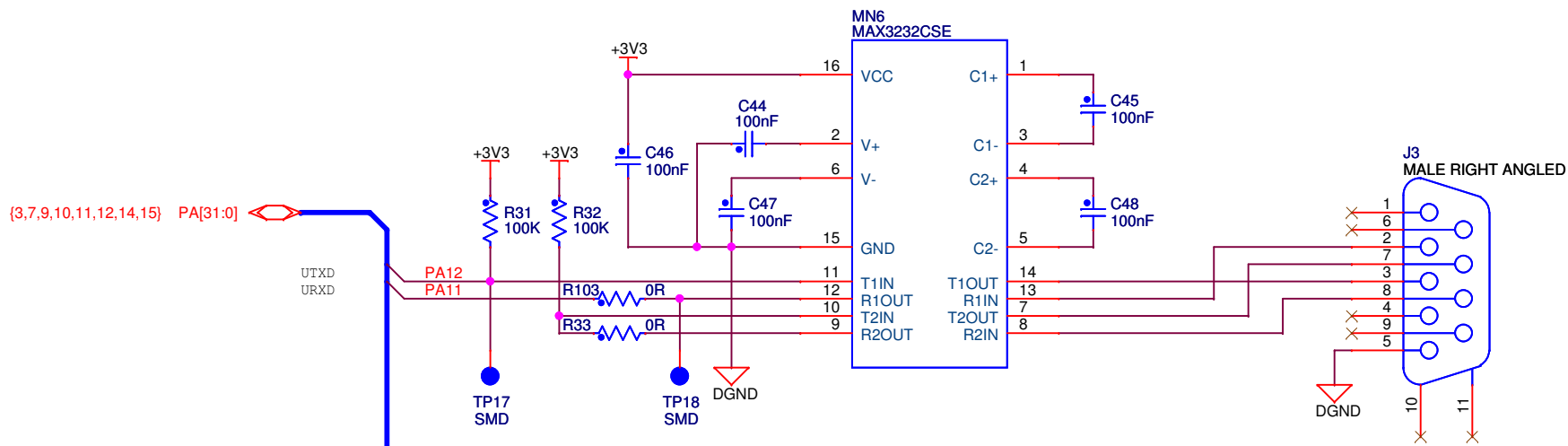
C	PP	XX-XXX-XX		
B	ZXL	19-MAY-09		
A	INIT EDIT	ZXL	03-FEB-09	XXX XX-XXX-XX
REV	MODIF.	DES.	DATE	VER. DATE
SCALE 1/1				REV. C
SHEET 6/15				



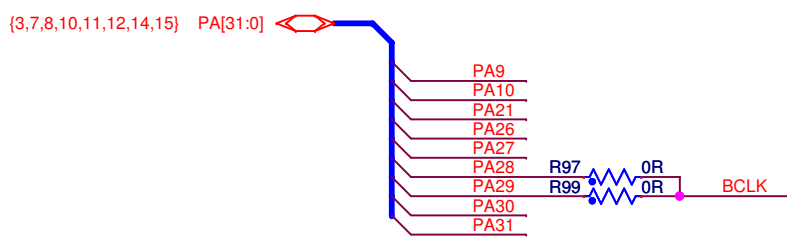
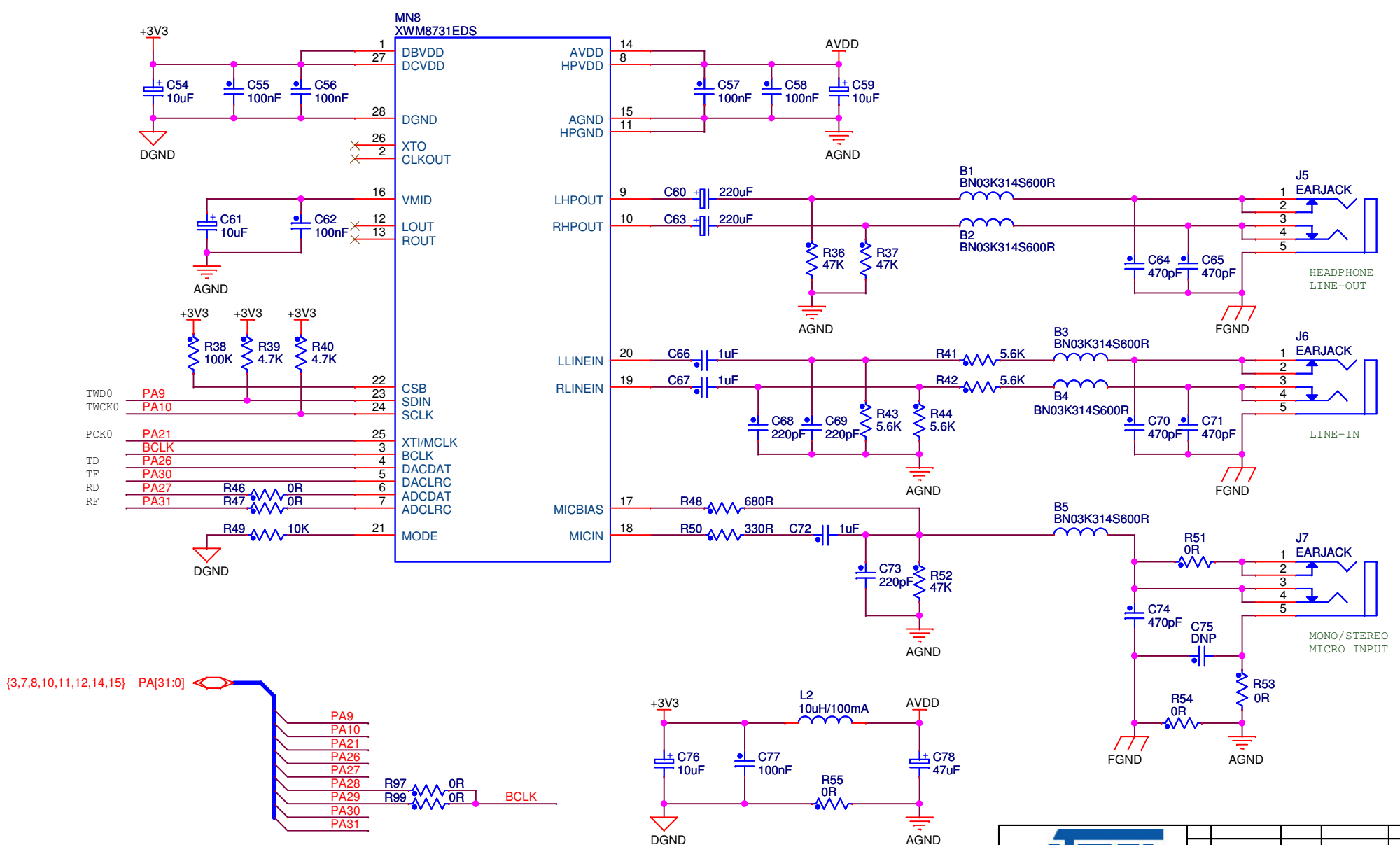
SAM3U-EK RevC
EBI Memory II NAND FLASH



C	PP	XX-XXX-XX		
B	ZXL	19-MAY-09		
A	INIT EDIT	ZXL	03-FEB-09	XXX XX-XXX-XX
REV	MODIF.	DES.	DATE	VER.
SCALE 1/1				REV. C
				SHEET 7/15

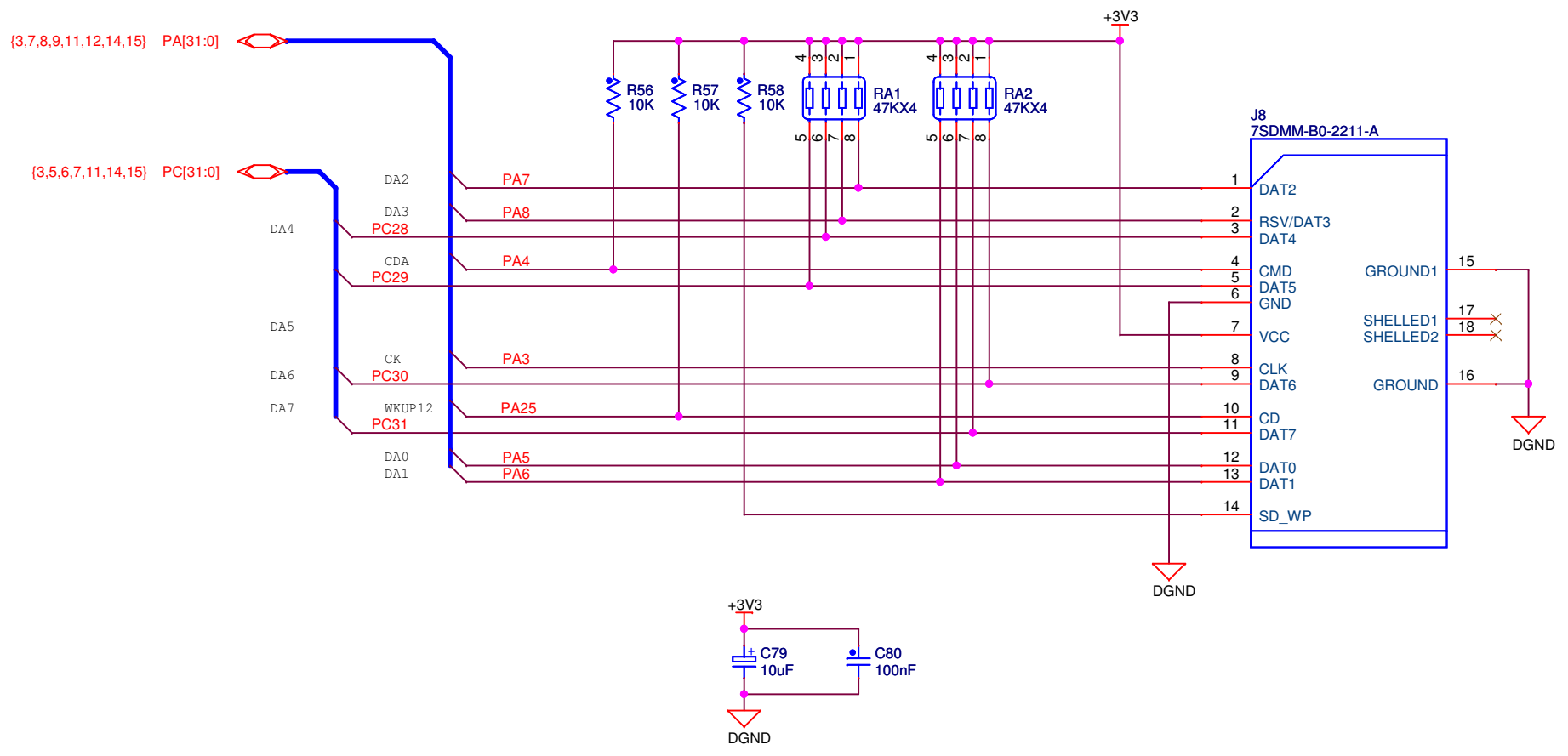


C		PP	XX-XXX-XX		
B		ZXL	19-MAY-09		
A	INIT EDIT	ZXL	03-FEB-09	XXX	XX-XXX-XX
REV	MODIF.	DES.	DATE	VER.	DATE
SCALE 1/1				REV. C	SHEET 8/15
UART & COM1 RS232					
<small>The agreement is our property. Reproduction and publication without our written authorization shall expose offender to legal proceedings.</small>					



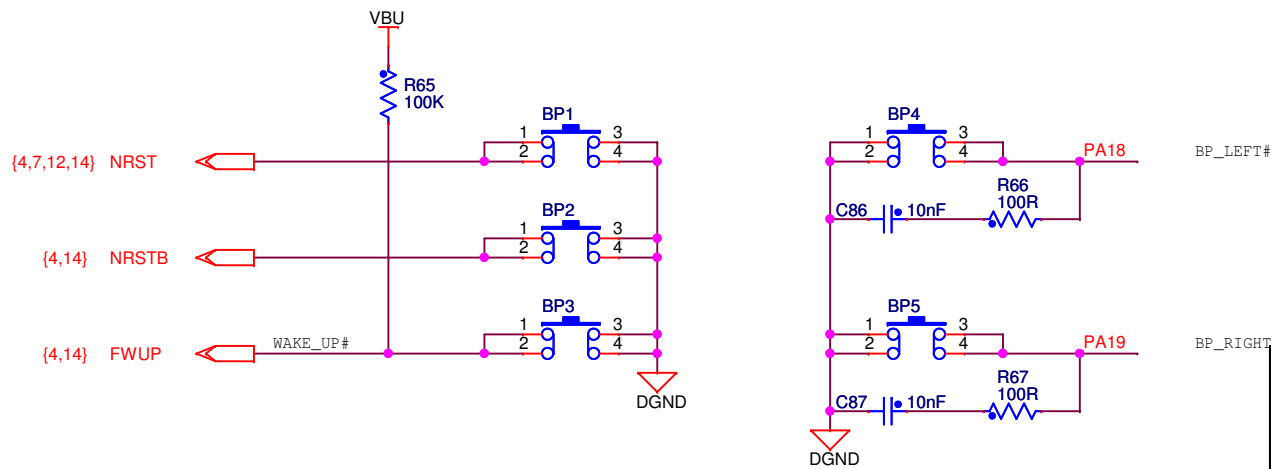
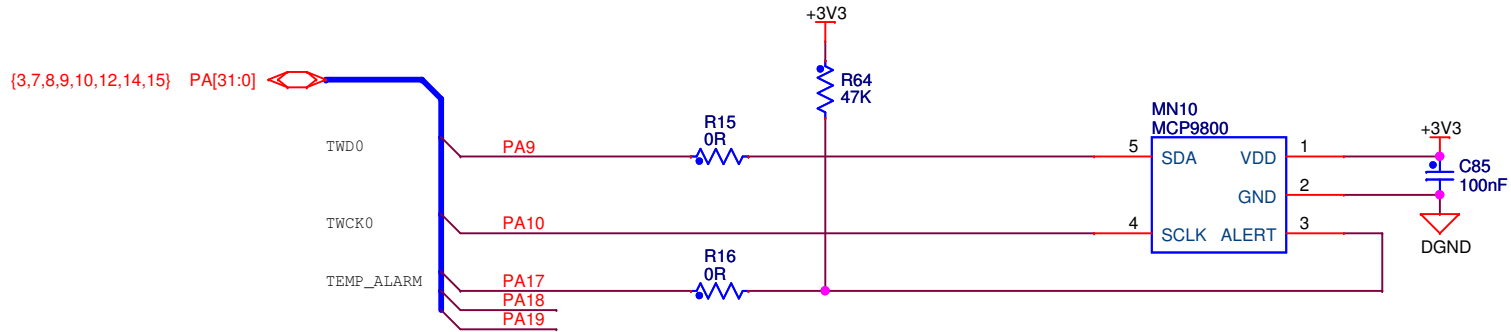
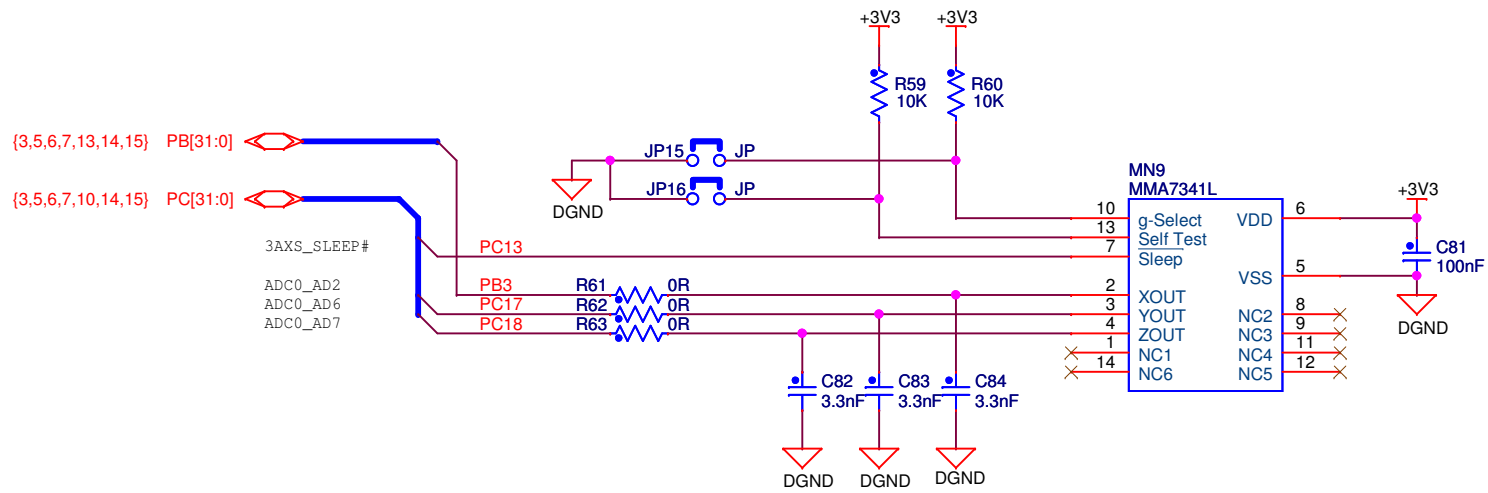
ATMEL					
ROUSSET					
C	PP	XX-XXX-XX			
B	ZXL	19-MAY-09			
A	INIT EDIT	ZXL	03-FEB-09	XXX	XX-XXX-XX
REV	MODIF.	DES.	DATE	VER.	DATE
SCALE 1/1				REV. C	SHEET 9/15
SAM3U-EK RevC					
Audio DAC					

The agreement is our property. Reproduction and publication without our written authorization shall expose offender to legal proceedings.



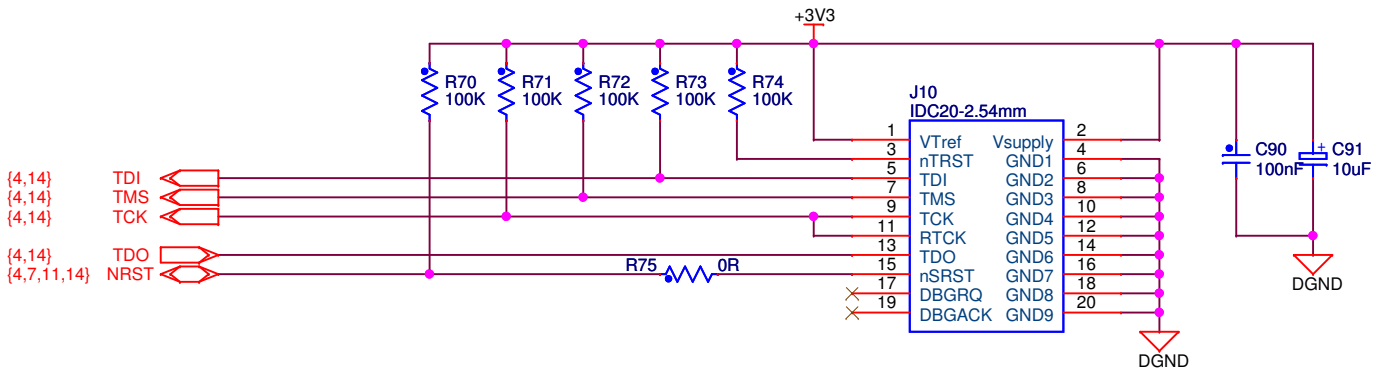
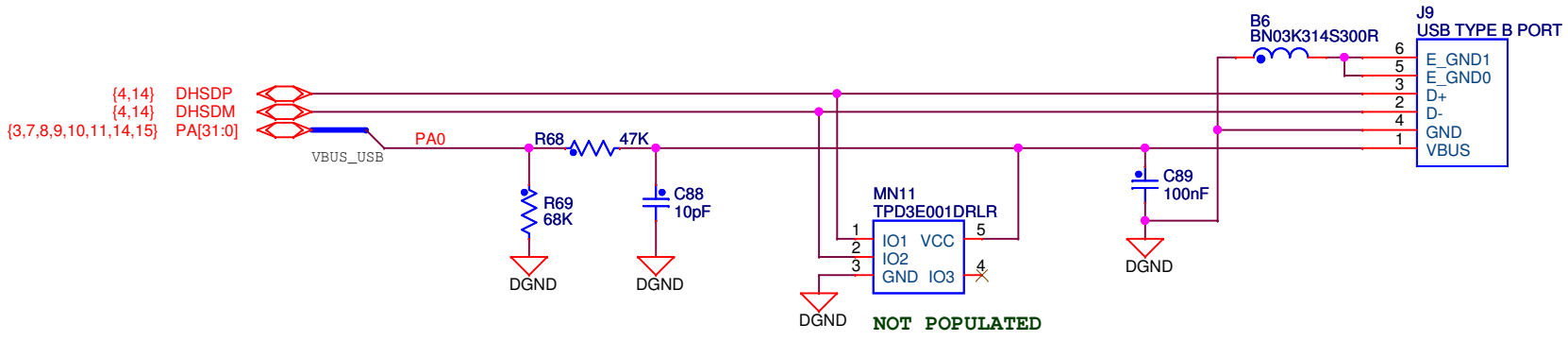
C		PP	XX-XXX-XX		
B		ZXL	19-MAY-09		
A	INIT EDIT	ZXL	03-FEB-09	XXX	XX-XXX-XX
REV	MODIF.	DES.	DATE	VER.	DATE
SCALE 1/1				REV. C	SHEET 10/15
SD/MMC interface					

This agreement is our property. Reproduction and publication without our written authorization shall expose offender to legal proceedings.



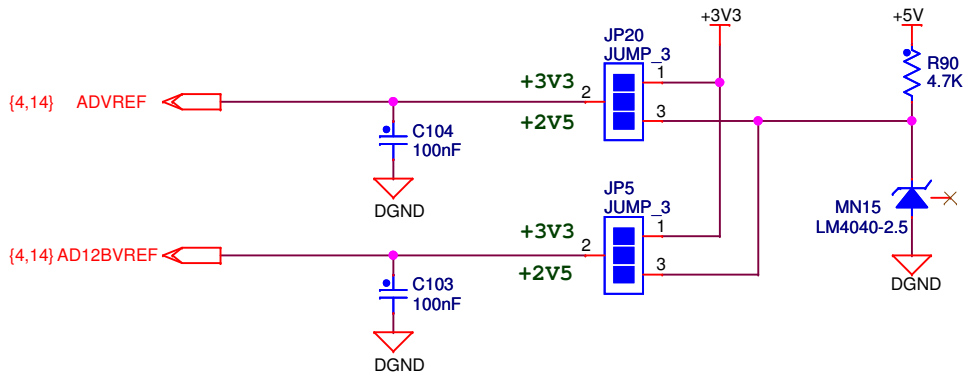
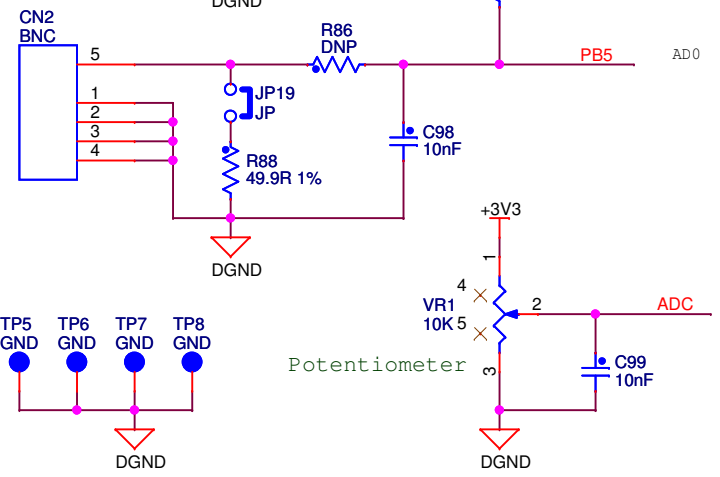
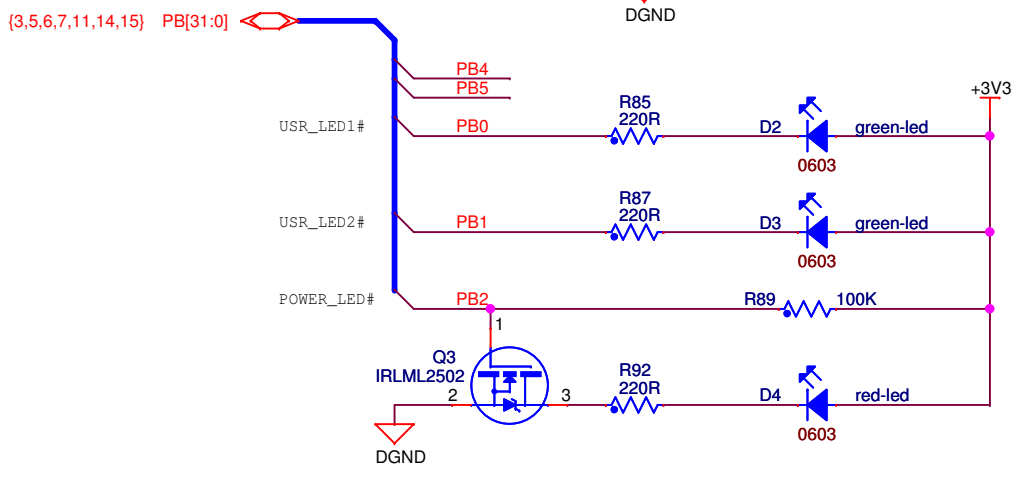
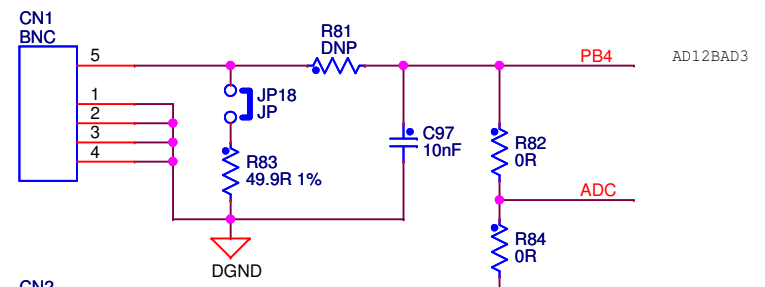
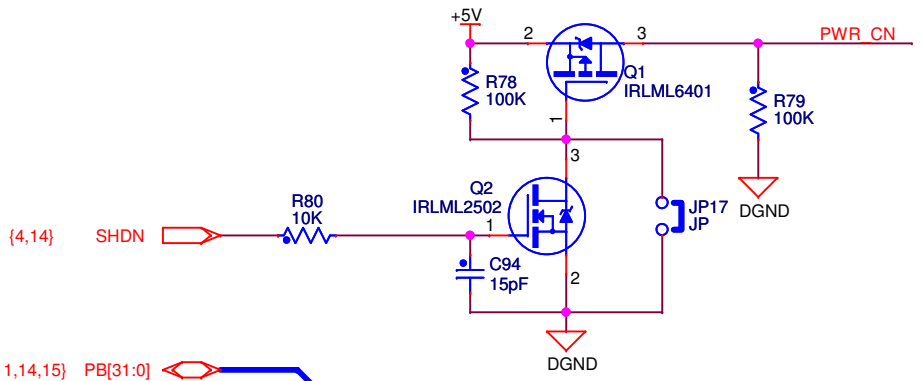
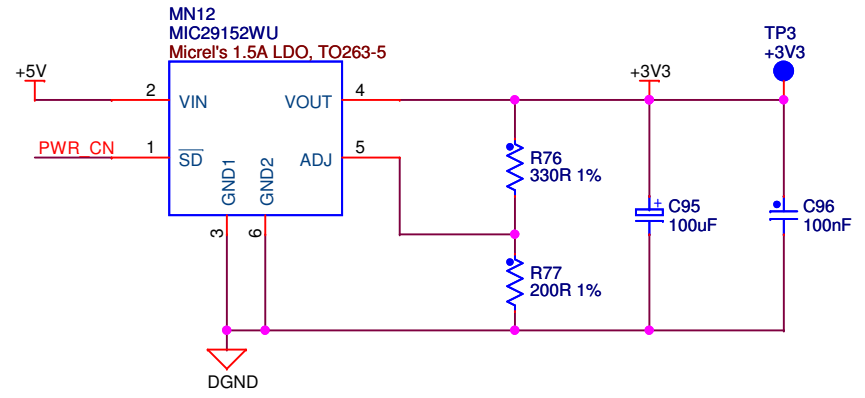
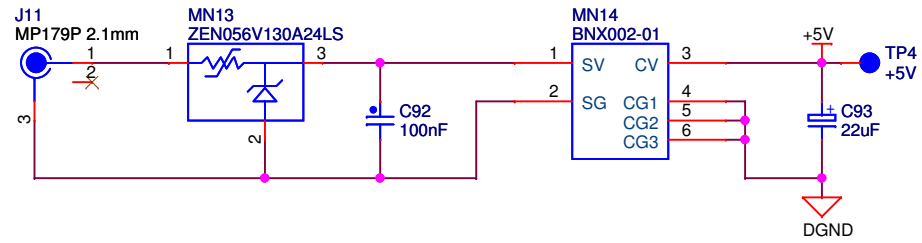
		C	PP	XX-XXX-XX		
		B	ZXL	19-MAY-09		
SAM3U-EK RevC Accelerometer,Temp.Buttons		A	INIT EDIT	ZXL	03-FEB-09	XXX XX-XXX-XX
SCALE	1/1	REV.	C	SHEET	11/15	

The agreement is our property. Reproduction and publication without our written authorization shall expose offender to legal proceedings.



		C	PP	XX-XXX-XX		
		B	ZXL	19-MAY-09		
SAM3U-EK RevC		A	INIT EDIT	ZXL	03-FEB-09	XXX XX-XXX-XX
USB & JTAG		REV	MODIF.	DES.	DATE	VER. DATE
		SCALE 1/1		REV. C		SHEET 12/15

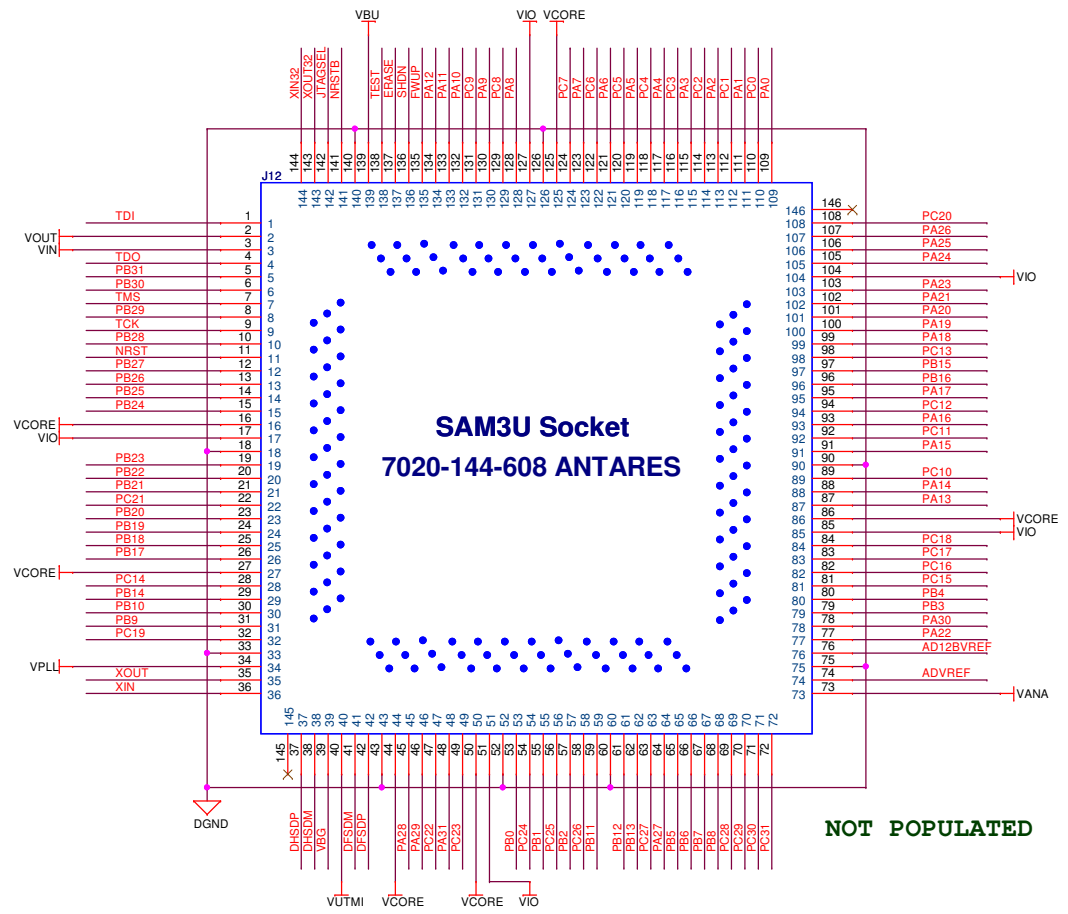
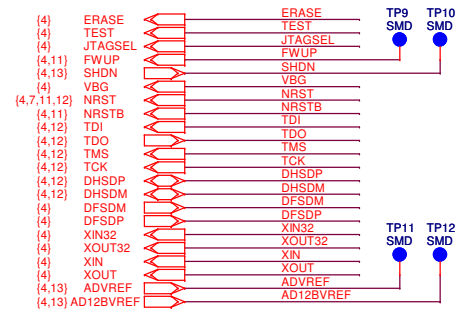
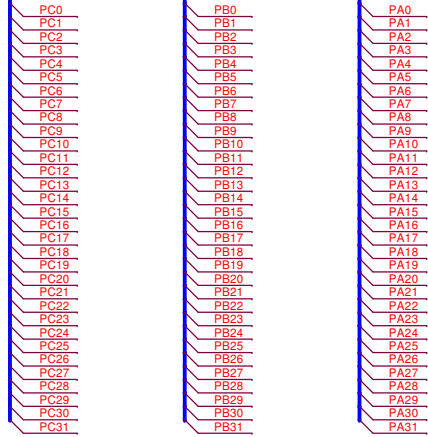
This agreement is our property. Reproduction and publication without our written authorization shall expose offender to legal proceedings.



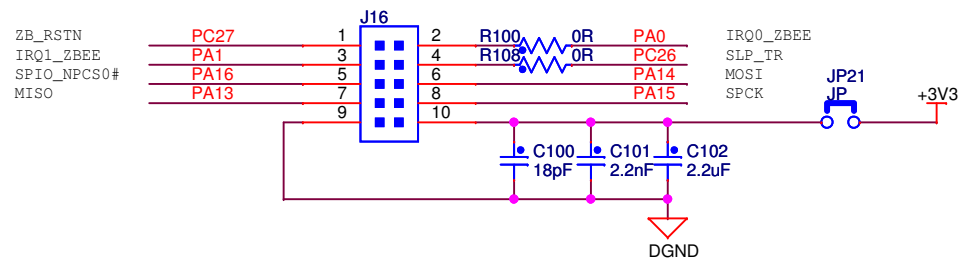
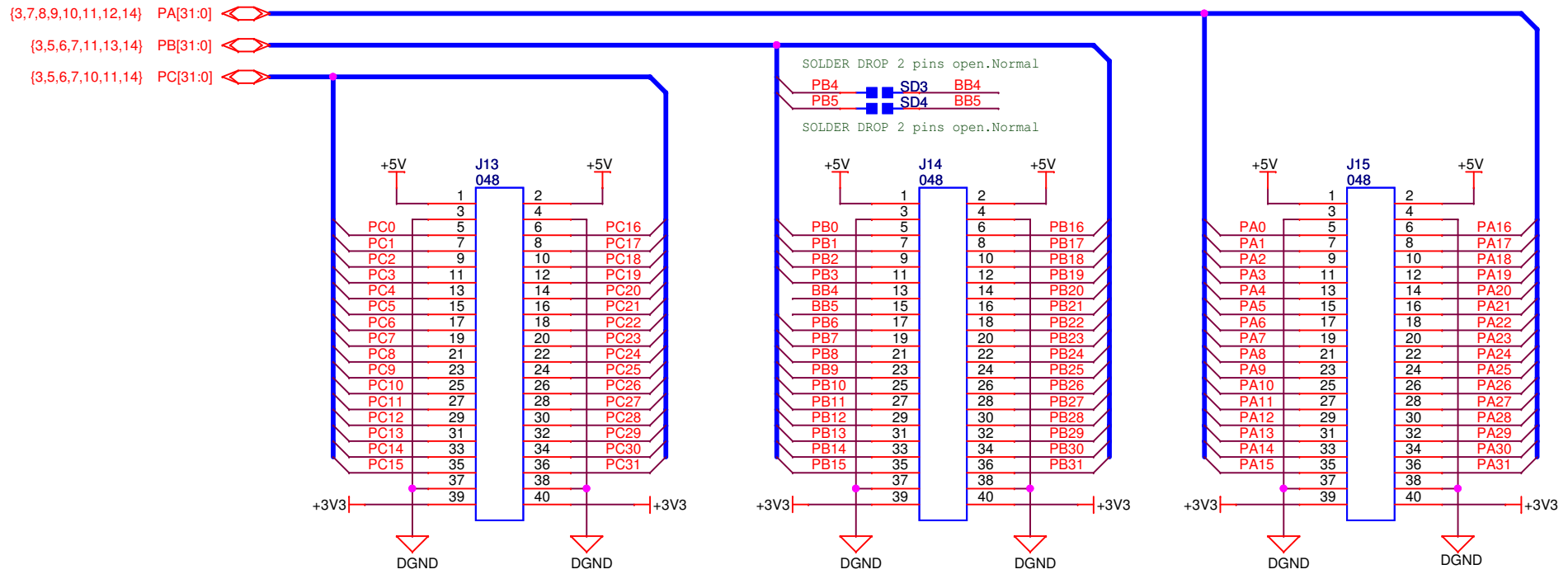
		C	PP	XX-XXX-XX		
		B	ZXL	19-MAY-09		
A	INIT EDIT	ZXL	03-FEB-09	XXX	XX-XXX-XX	
REV	MODIF.	DES.	DATE	VER.	DATE	
SAM3U-EK RevC		SCALE	1/1	REV.	SHEET	
Power Supply, ADC & Led				C	13/15	

This agreement is our property. Reproduction and publication without our written authorization shall expose offender to legal proceedings.

(3,7,8,9,10,11,12,15) PA[31:0]
 (3,5,6,7,11,13,15) PB[31:0]
 (3,5,6,7,10,11,15) PC[31:0]



		REV	INIT EDIT	DES.	DATE	VER.	XXX	XX-XXX-XX
		REV	MODIF.	DES.	DATE	VER.	XXX	XX-XXX-XX
SAM3U-EK RevC SAM3U socket		SCALE 1/1		REV. SHEET C 14/15				



ATMEL					
ROUSSET					
C		PP	XX-XXX-XX		
B		ZXL	19-MAY-09		
A	INIT EDIT	ZXL	03-FEB-09	XXX	XX-XXX-XX
REV	MODIF.	DES.	DATE	VER.	DATE
SCALE 1/1				REV. C	SHEET 15/15
SAM3U-EK RevC		User interface & ZigBee			
The agreement is our property. Reproduction and publication without our written authorization shall expose offender to legal proceedings.					