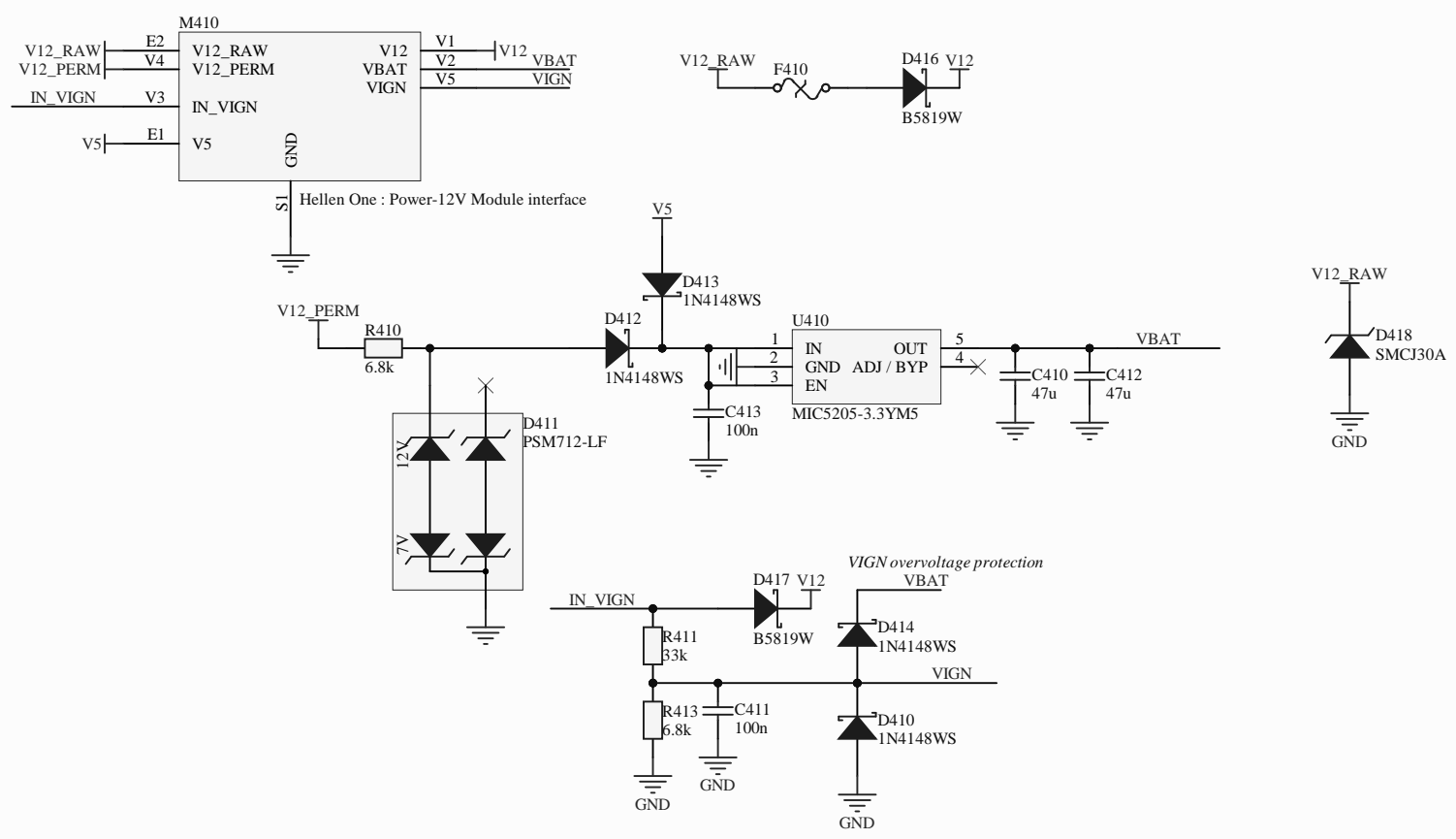
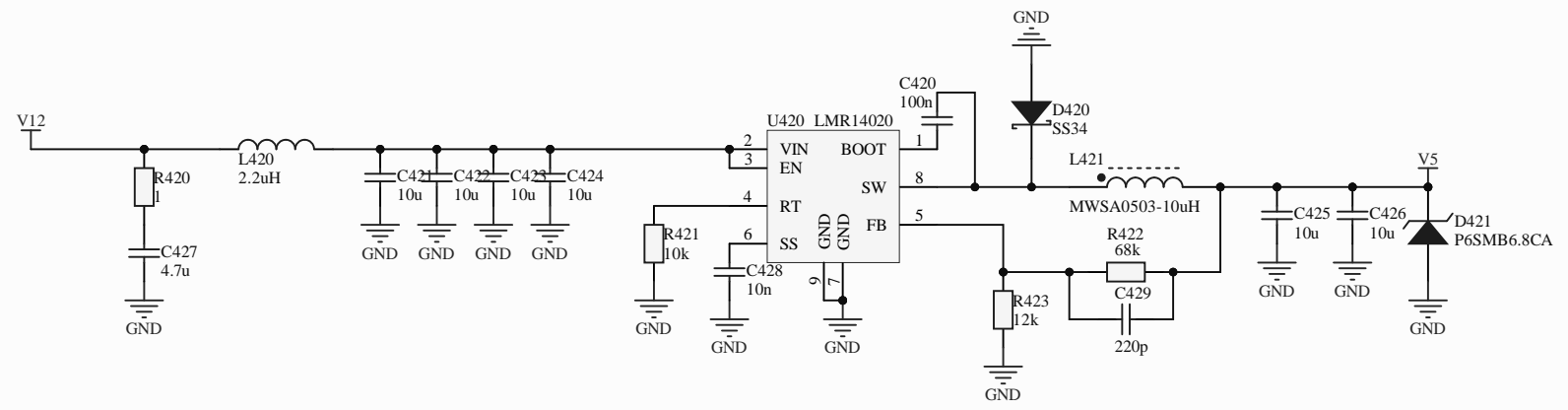
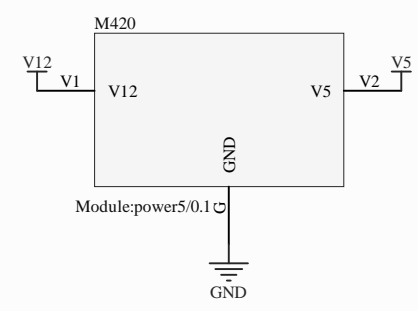


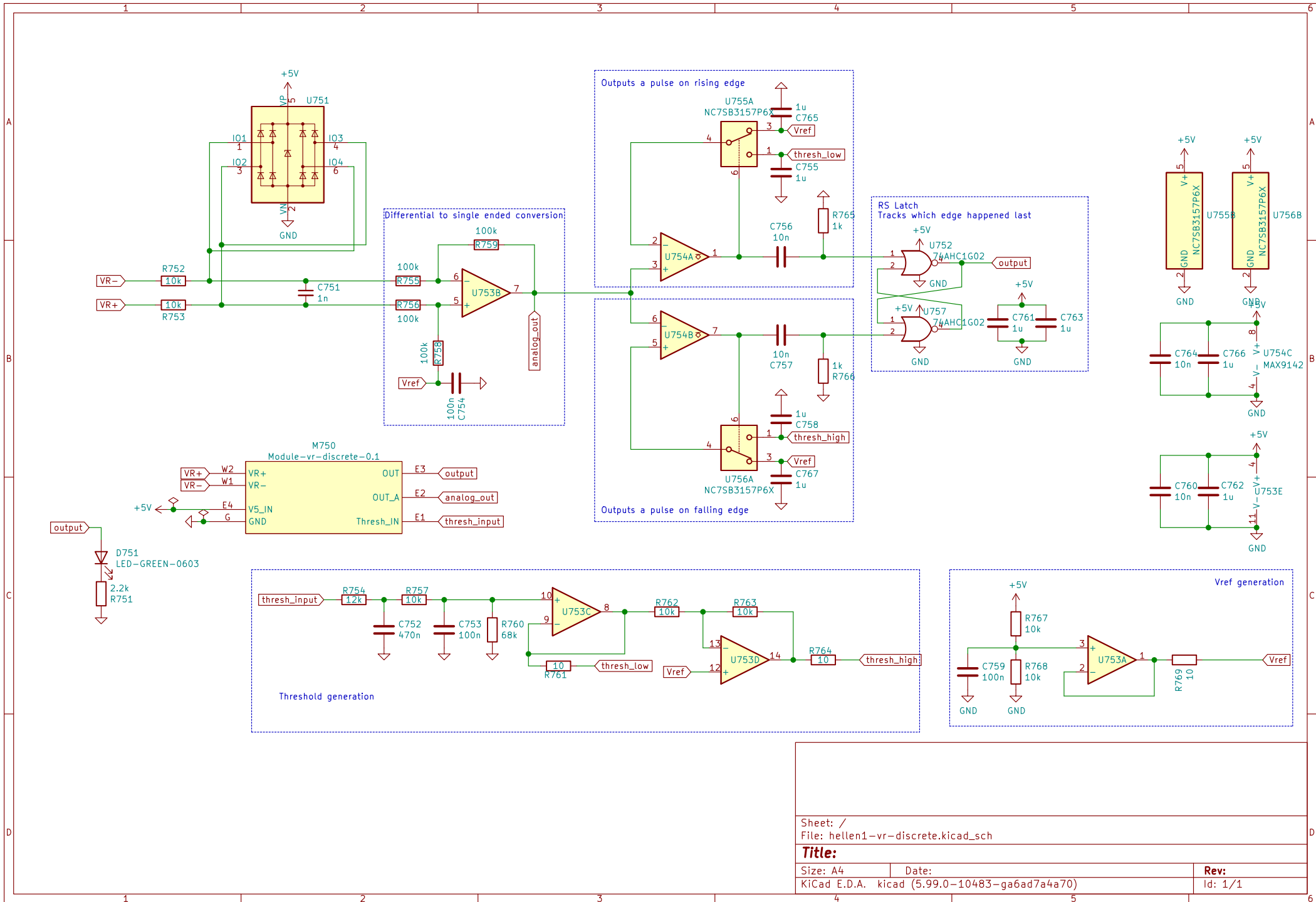
FOR OFF ROAD PURPOSES ONLY  
This is not for applications with  
emissions or safety regulations  
(AKA not for street use). This is  
for closed stages, track  
and equipment.  
<http://www.alphaecu.com/>

AlphaECU  
ruseEFI

Sheet: 7  
Title: AlphaECU Bchan powered by ruseEFI  
Size: A1 Date: 2022-12-17  
Kicad E.D.A. Viced (6.0.0) Rev: A  
16 / 14



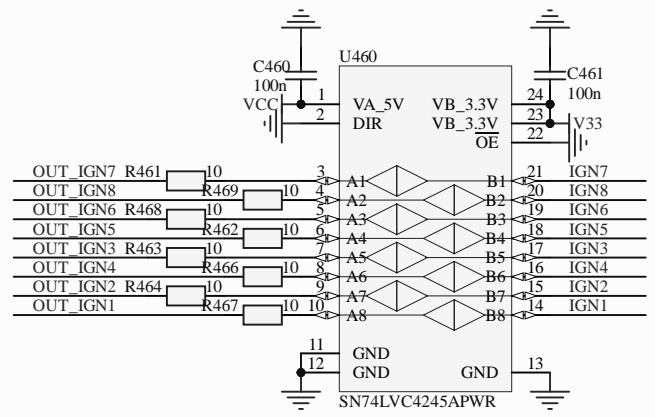
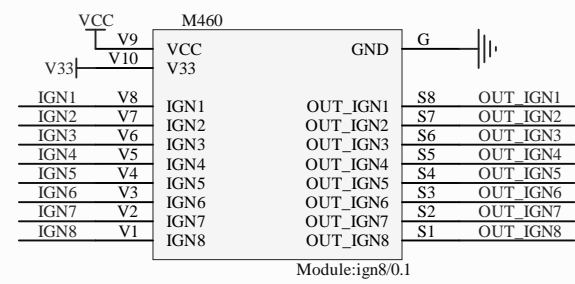




Sheet: /  
 File: hellen1-vr-discrete.kicad\_sch

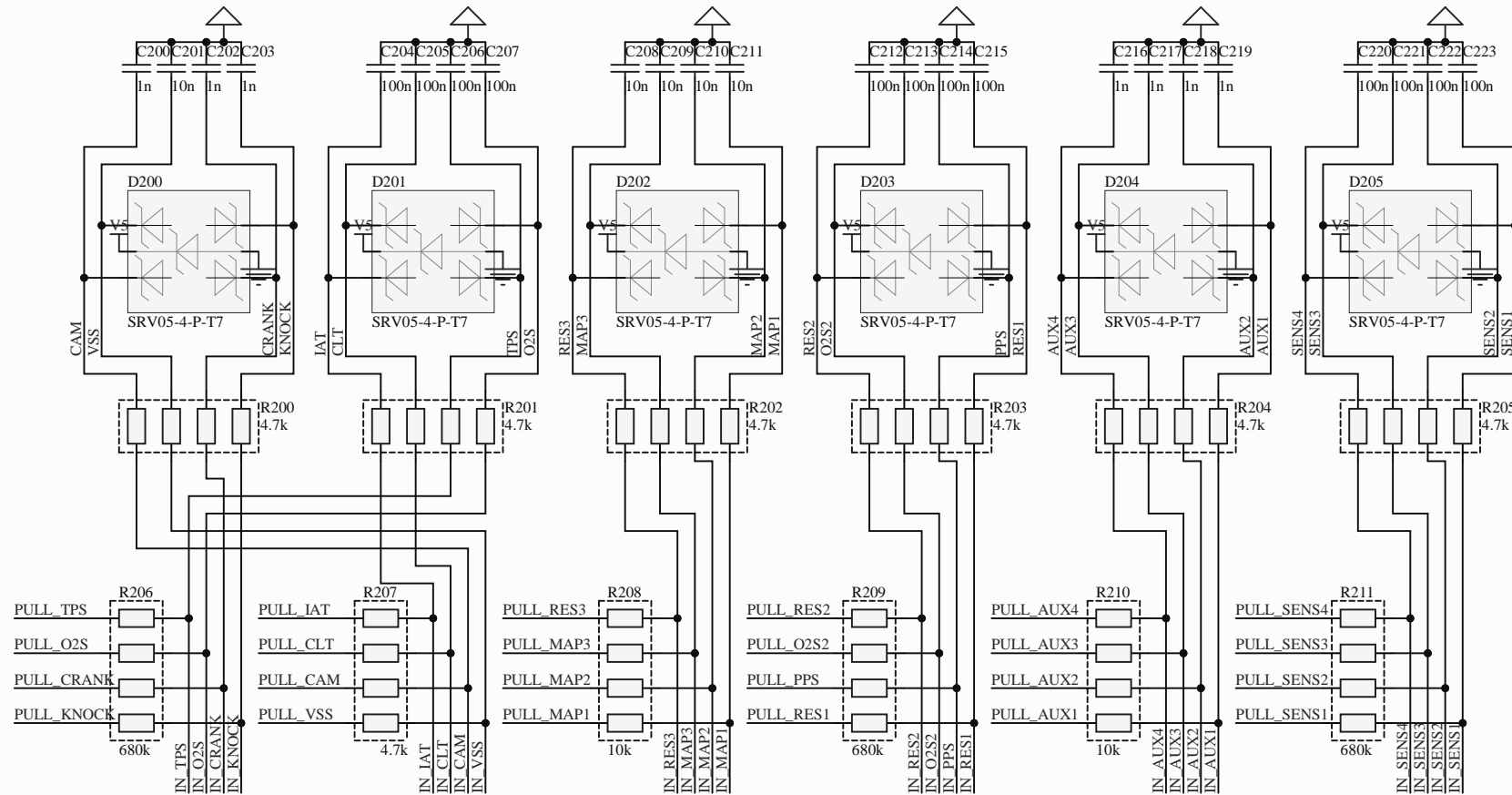
**Title:**  
 Size: A4 Date:  
 KiCad E.D.A. kicad (5.99.0-10483-ga6ad7a4a70)

**Rev:**  
 Id: 1/1



M200D			
PULL_CRANK J21	PULL_CRANK	PULL_MAP1	J14 PULL_MAP1
PULL_CAM J17	PULL_CAM	PULL_MAP2	J13 PULL_MAP2
PULL_VSS J18	PULL_VSS	PULL_MAP3	J12 PULL_MAP3
PULL_TPS J19	PULL_TPS	PULL_AUX1	J10 PULL_AUX1
PULL_PPS J5	PULL_PPS	PULL_AUX2	J9 PULL_AUX2
PULL_IAT J15	PULL_IAT	PULL_AUX3	J8 PULL_AUX3
PULL_CLT J16	PULL_CLT	PULL_AUX4	J7 PULL_AUX4
PULL_O2S J20	PULL_O2S	PULL_SENS1	J26 PULL_SENS1
PULL_O2S2 J4	PULL_O2S2	PULL_SENS2	J25 PULL_SENS2
PULL_RES1 J6	PULL_RES1	PULL_SENS3	J24 PULL_SENS3
PULL_RES2 J3	PULL_RES2	PULL_SENS4	J23 PULL_SENS4
PULL_RES3 J11	PULL_RES3	PULL_KNOCK	J22 PULL_KNOCK

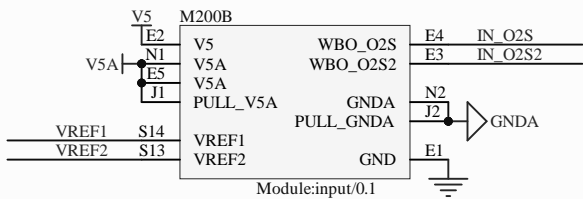
Module:input/0.1



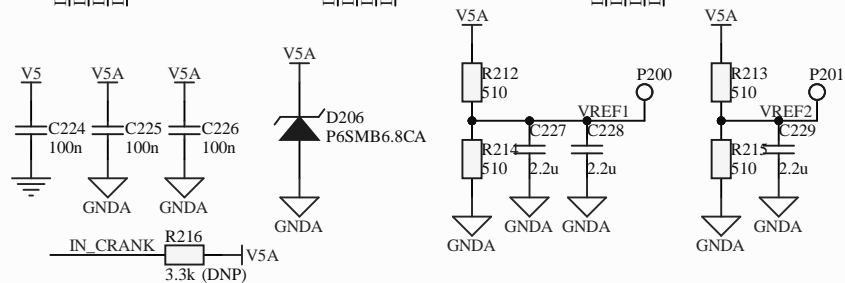
M200C		M200A	
IN_CRANK S8	IN_CRANK	N21 CRANK	CRANK
IN_CAM S5	IN_CAM	N19 CAM	CAM
IN_VSS S6	IN_VSS	N20 VSS	VSS
IN_TPS S10	IN_TPS	N17 TPS	TPS
IN_PPS S24	IN_PPS	N5 PPS	PPS
IN_IAT S16	IN_IAT	N15 IAT	IAT
IN_CLT S15	IN_CLT	N16 CLT	CLT
IN_O2S S9	IN_O2S	N18 O2S	O2S
IN_O2S2 S25	IN_O2S2	N4 O2S2	O2S2
IN_RES1 S23	IN_RES1	N6 RES1	RES1
IN_RES2 S26	IN_RES2	N3 RES2	RES2
IN_RES3 S22	IN_RES3	N11 RES3	RES3
IN_MAP1 S11	IN_MAP1	N14 MAP1	MAP1
IN_MAP2 S12	IN_MAP2	N13 MAP2	MAP2
IN_MAP3 S19	IN_MAP3	N12 MAP3	MAP3
IN_AUX1 S17	IN_AUX1	N10 AUX1	AUX1
IN_AUX2 S18	IN_AUX2	N9 AUX2	AUX2
IN_AUX3 S20	IN_AUX3	N8 AUX3	AUX3
IN_AUX4 S21	IN_AUX4	N7 AUX4	AUX4
IN_SENS1 S1	IN_SENS1	N26 SENS1	SENS1
IN_SENS2 S2	IN_SENS2	N25 SENS2	SENS2
IN_SENS3 S3	IN_SENS3	N24 SENS3	SENS3
IN_SENS4 S4	IN_SENS4	N23 SENS4	SENS4
IN_KNOCK S7	IN_KNOCK	N22 KNOCK	KNOCK

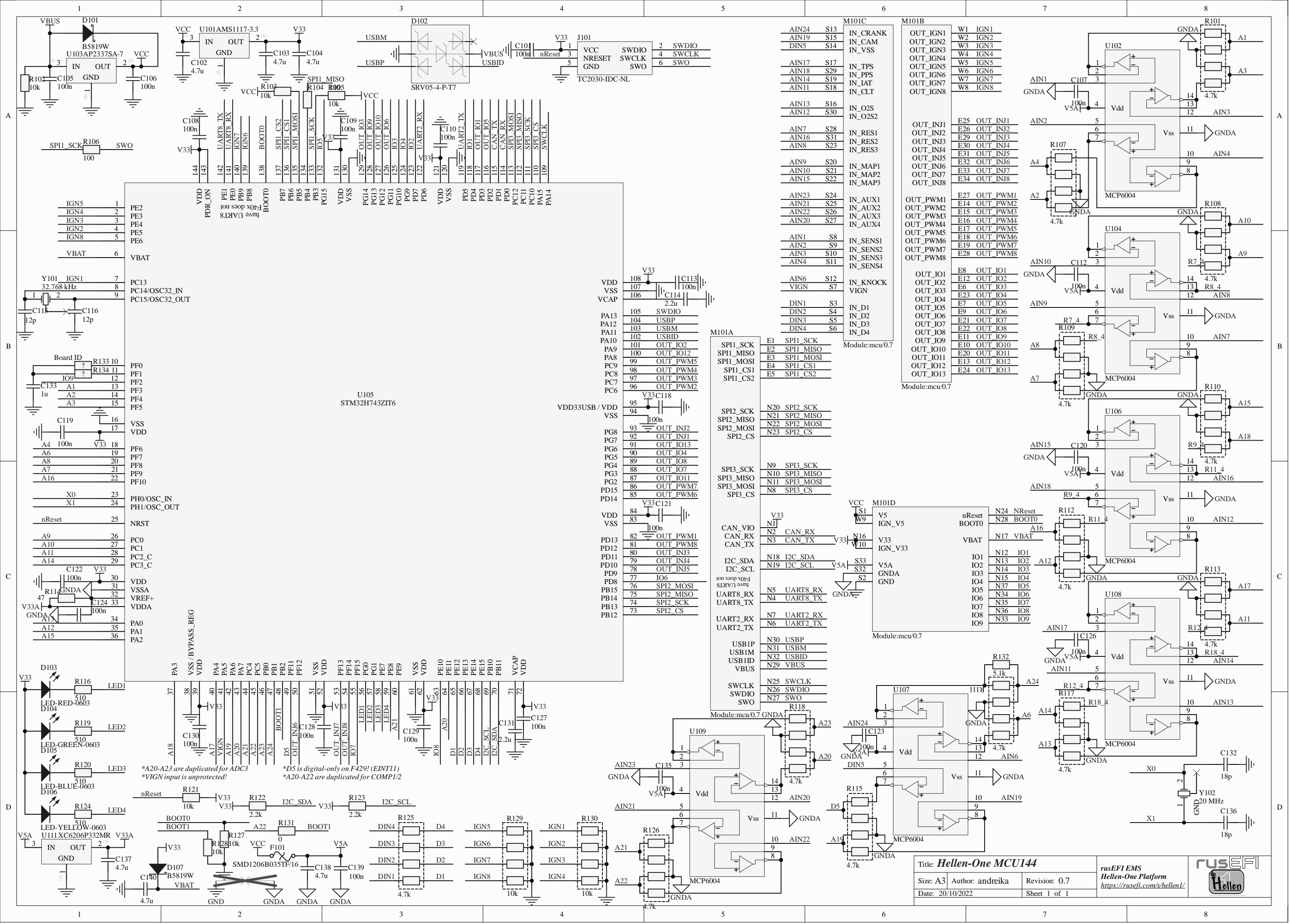
Module:input/0.1

Module:input/0.1

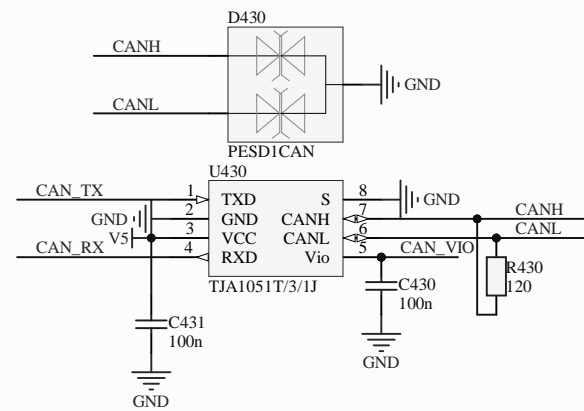
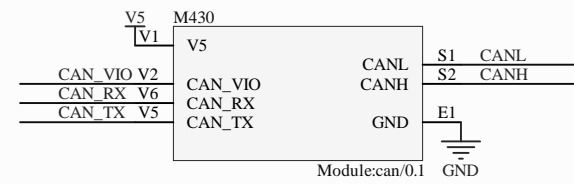


Module:input/0.1

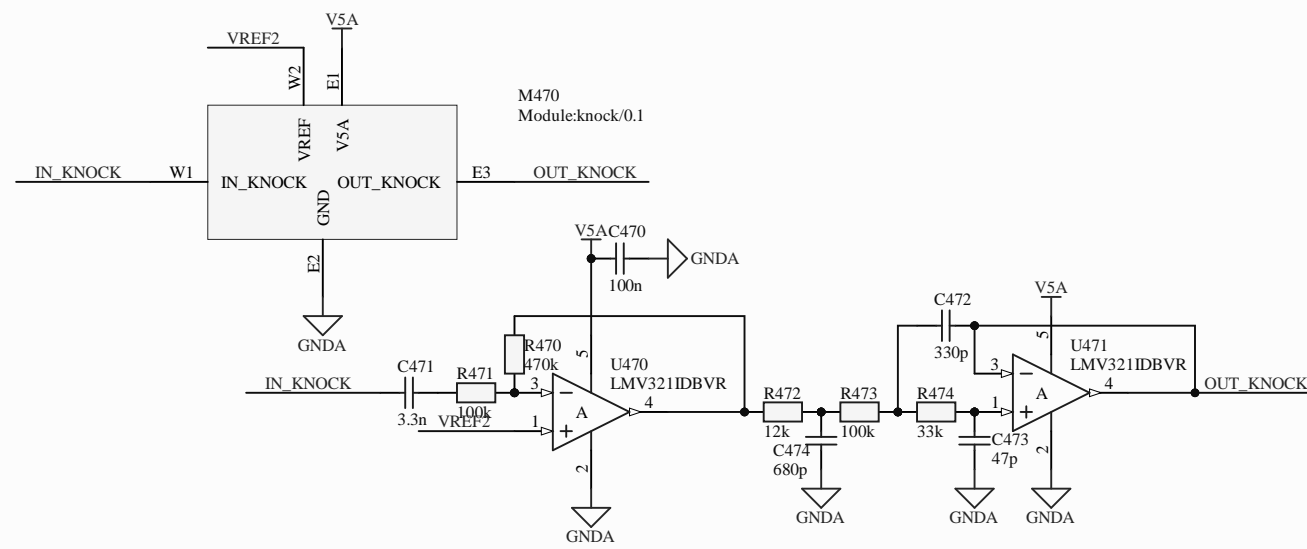


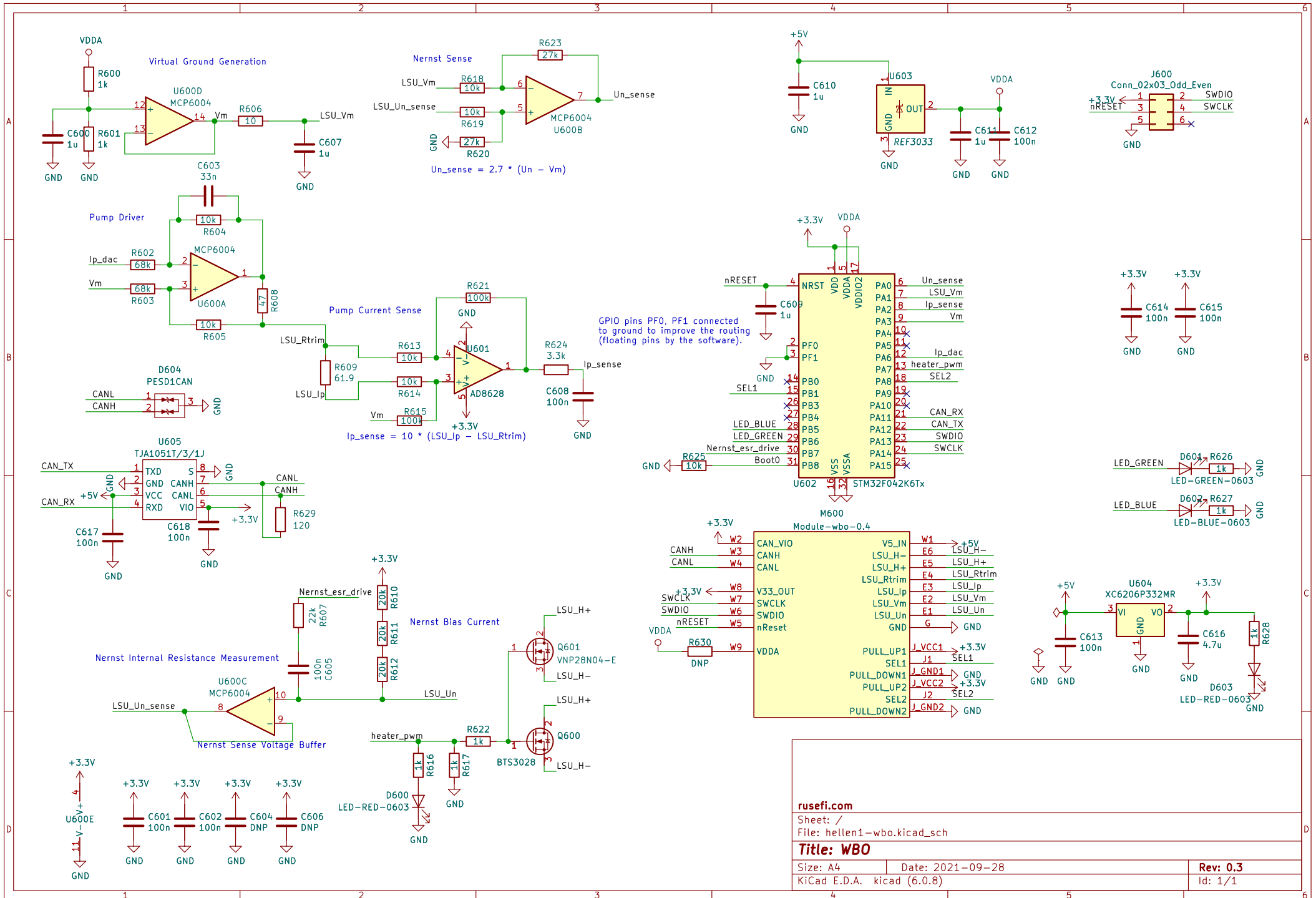


IGN5	1	PE2	VDD_ON		
IGN4	2	PE3	PDR_IN		
IGN3	3	PE4	PE1		
IGN2	4	PE5	PE0		
IGN8	5	PE6	UART8_RX		
			UART8_TX		
VBAT	6	VBAT	BOOT0		
			PB7		
			PB6		
			PB5		
			PB4		
			PB3		
			PB2		
			PB1		
			BOOT1		
			PB0		
			PB15		
			PB14		
			PB13		
			PB12		
			PB11		
			PB10		
			PB9		
			PB8		
			PB7		
			PB6		
			PB5		
			PB4		
			PB3		
			PB2		
			PB1		
			PB0		
			PB15		
			PB14		
			PB13		
			PB12		
			PB11		
			PB10		
			PB9		
			PB8		
			PB7		
			PB6		
			PB5		
			PB4		
			PB3		
			PB2		
			PB1		
			PB0		
			PB15		
			PB14		
			PB13		
			PB12		
			PB11		
			PB10		
			PB9		
			PB8		
			PB7		
			PB6		
			PB5		
			PB4		
			PB3		
			PB2		
			PB1		
			PB0		
			PB15		
			PB14		
			PB13		
			PB12		
			PB11		
			PB10		
			PB9		
			PB8		
			PB7		
			PB6		
			PB5		
			PB4		
			PB3		
			PB2		
			PB1		
			PB0		
			PB15		
			PB14		
			PB13		
			PB12		
			PB11		
			PB10		
			PB9		
			PB8		
			PB7		
			PB6		
			PB5		
			PB4		
			PB3		
			PB2		
			PB1		
			PB0		
			PB15		
			PB14		
			PB13		
			PB12		
			PB11		
			PB10		
			PB9		
			PB8		
			PB7		
			PB6		
			PB5		
			PB4		
			PB3		
			PB2		
			PB1		
			PB0		
			PB15		
			PB14		
			PB13		
			PB12		
			PB11		
			PB10		
			PB9		
			PB8		
			PB7		
			PB6		
			PB5		
			PB4		
			PB3		
			PB2		
			PB1		
			PB0		
			PB15		
			PB14		
			PB13		
			PB12		
			PB11		
			PB10		
			PB9		
			PB8		
			PB7		
			PB6		
			PB5		
			PB4		
			PB3		
			PB2		
			PB1		
			PB0		
			PB15		
			PB14		
			PB13		
			PB12		
			PB11		
			PB10		
			PB9		
			PB8		
			PB7		
			PB6		
			PB5		
			PB4		
			PB3		
			PB2		
			PB1		
			PB0		
			PB15		
			PB14		
			PB13		
			PB12		
			PB11		
			PB10		
			PB9		
			PB8		
			PB7		
			PB6		
			PB5		
			PB4		
			PB3		
			PB2		
			PB1		
			PB0		
			PB15		
			PB14		
			PB13		
			PB12		
			PB11		
			PB10		
			PB9		
			PB8		
			PB7		
			PB6		
			PB5		
			PB4		
			PB3		
			PB2		
			PB1		
			PB0		
			PB15		
			PB14		
			PB13		
			PB12		
			PB11		
			PB10		
			PB9		
			PB8		
			PB7		
			PB6		
			PB5		
			PB4		
			PB3		
			PB2		
			PB1		
			PB0		
			PB15		
			PB14		
			PB13		
			PB12		
			PB11		
			PB10		
			PB9		
			PB8		
			PB7		
			PB6		
			PB5		
			PB4		
			PB3		
			PB2		
			PB1		
			PB0		
			PB15		
			PB14		
			PB13		
			PB12		
			PB11		
			PB10		
			PB9		
			PB8		
			PB7		
			PB6		
			PB5		
			PB4		
			PB3		
			PB2		
			PB1		
			PB0		
			PB15		
			PB14		
			PB13		
			PB12		
			PB11		
			PB10		
			PB9		
			PB8		
			PB7		
			PB6		
			PB5		
			PB4		
			PB3		
			PB2		
			PB1		
			PB0		
			PB15		
			PB14		
			PB13		
			PB12		
			PB11		
			PB10		
			PB9		
			PB8		
			PB7		
			PB6		
			PB5		
			PB4		
			PB3		
			PB2		
			PB1		
			PB0		
			PB15		
			PB14		
			PB13		
			PB12		
			PB11		
			PB10		
			PB9		
			PB8		
			PB7		
			PB6		
			PB5		
			PB4		
			PB3		
			PB2		
			PB1		
			PB0		
			PB15		
			PB14		
			PB13		
			PB12		
			PB11		
			PB10		
			PB9		
			PB8		
			PB7		
			PB6		
			PB5		
			PB4		
			PB3		
			PB2		
			PB1		
			PB0		
			PB15		
			PB14		
			PB13		
			PB12		
			PB11		
			PB10		
			PB9		
			PB8		
			PB7		
			PB6		
			PB5		
			PB4		
			PB3		
			PB2		
			PB1		
			PB0		
			PB15		
			PB14		
			PB13		
			PB12		
			PB11		
			PB10		
			PB9		
			PB8		
			PB7		
			PB6		
			PB5		
			PB4		
			PB3		
			PB2		
			PB1		
		</			









<b>rusefi.com</b>	
Sheet: /	
File: hellen1-wbo.kicad_sch	
<b>Title: WBO</b>	
Size: A4	Date: 2021-09-28
KiCad E.D.A. kicad (6.0.8)	Rev: 0.3
	Id: 1/1

