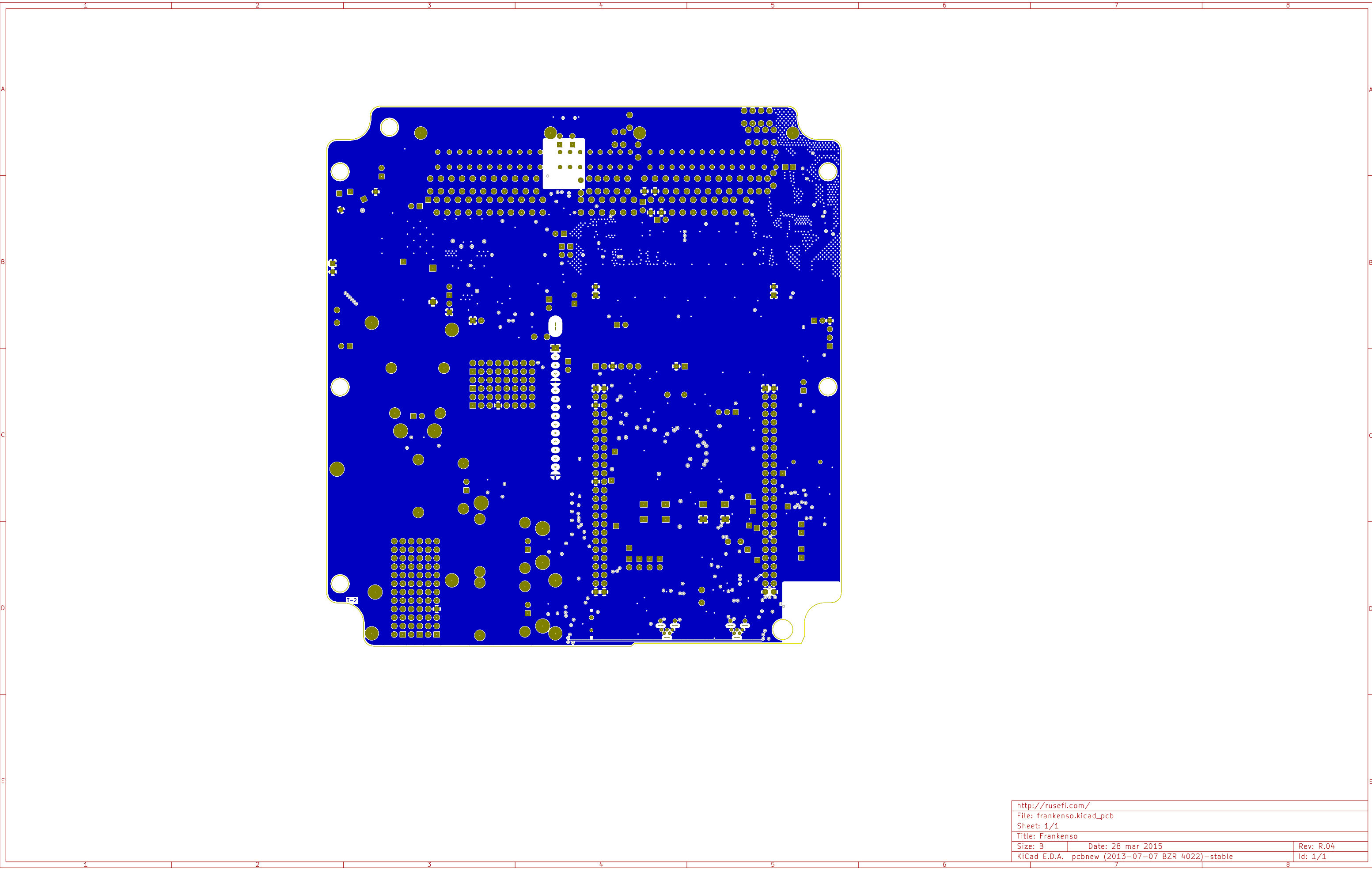
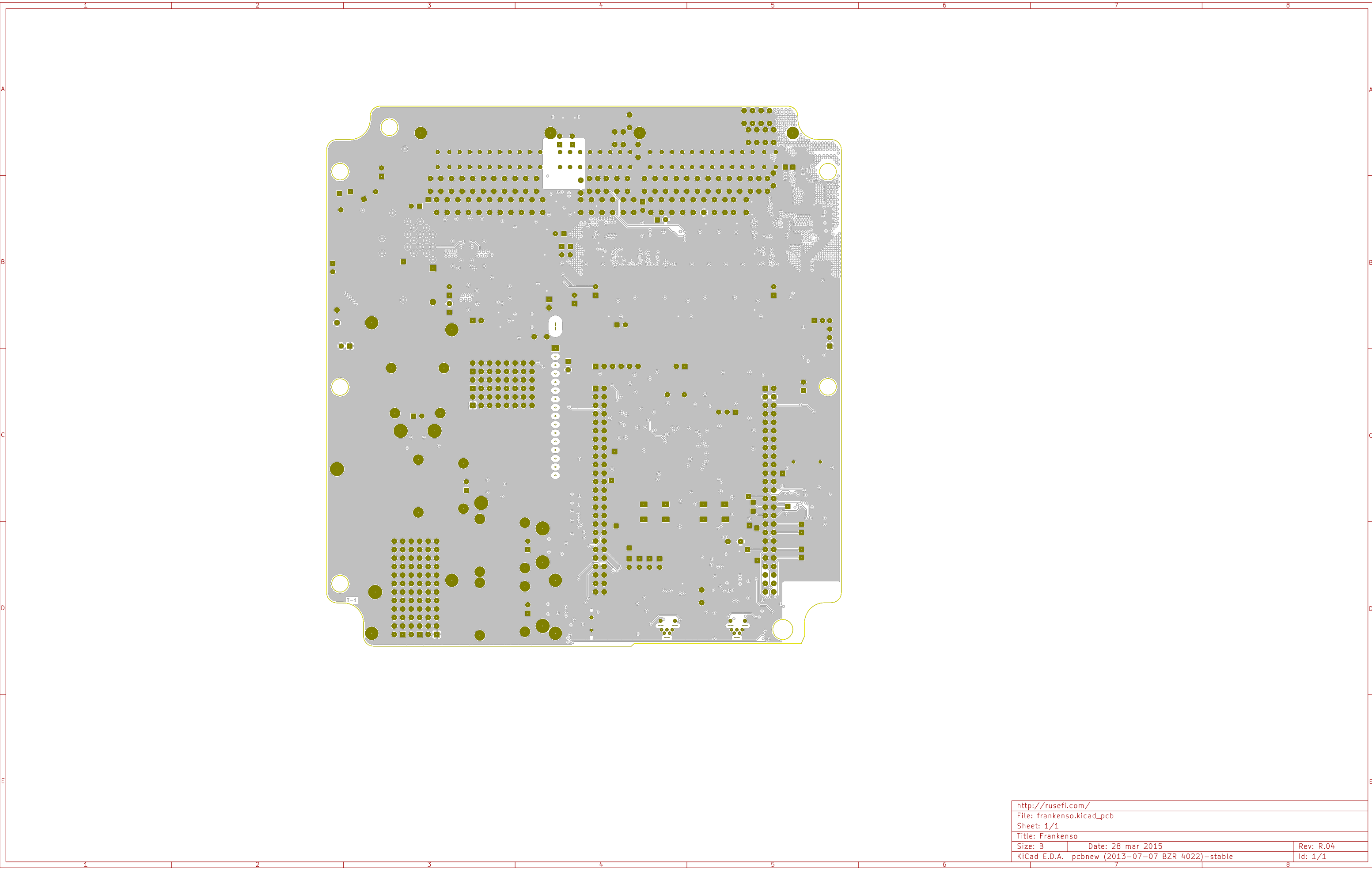


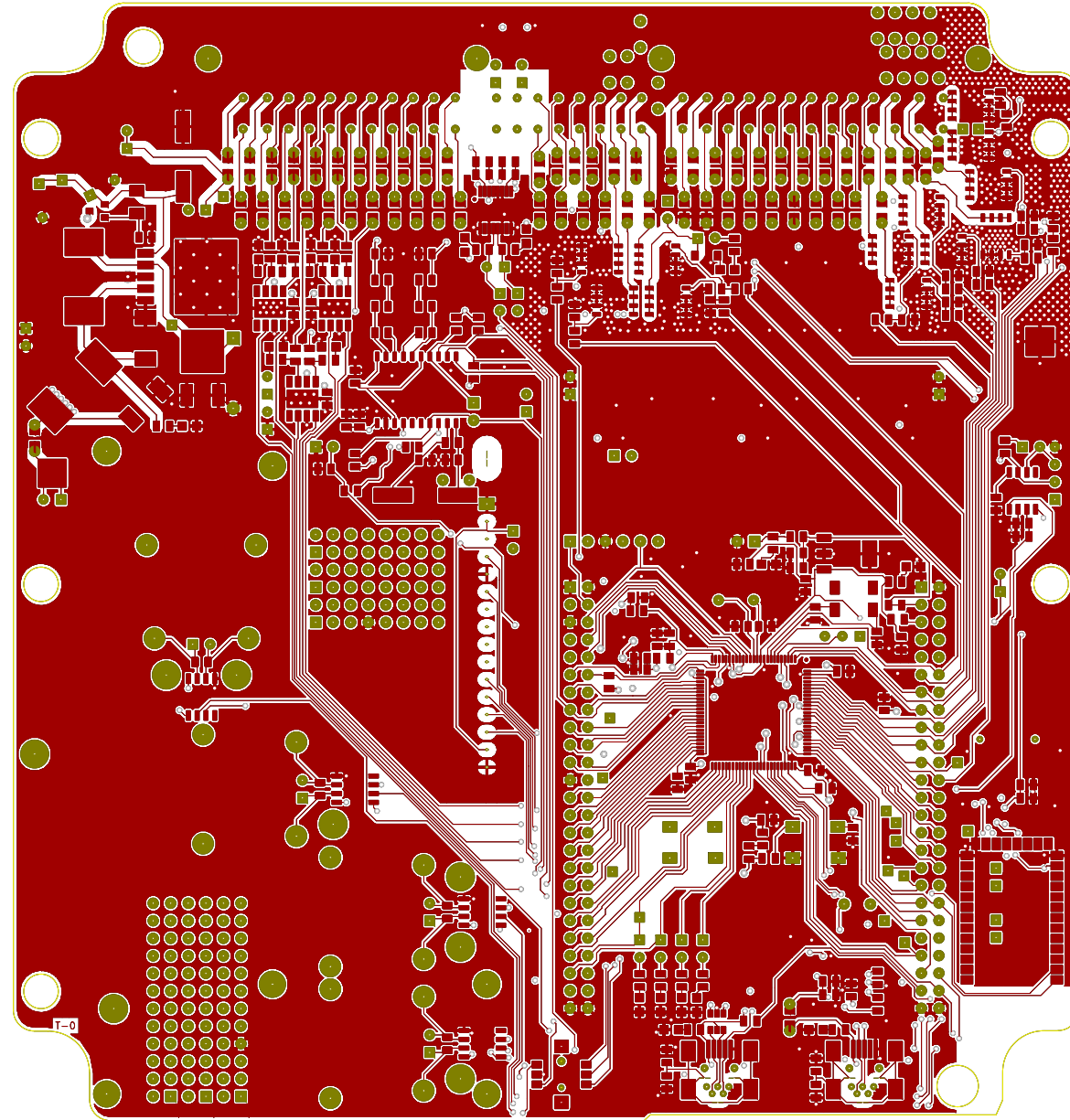
http://rusefi.com/		
File: frankenso.kicad_pcb		
Sheet: 1/1		
Title: Frankenso		
Size: B	Date: 28 mar 2015	Rev: R.04
KiCad E.D.A. pcbnew (2013-07-07 BZR 4022)-stable		Id: 1/1



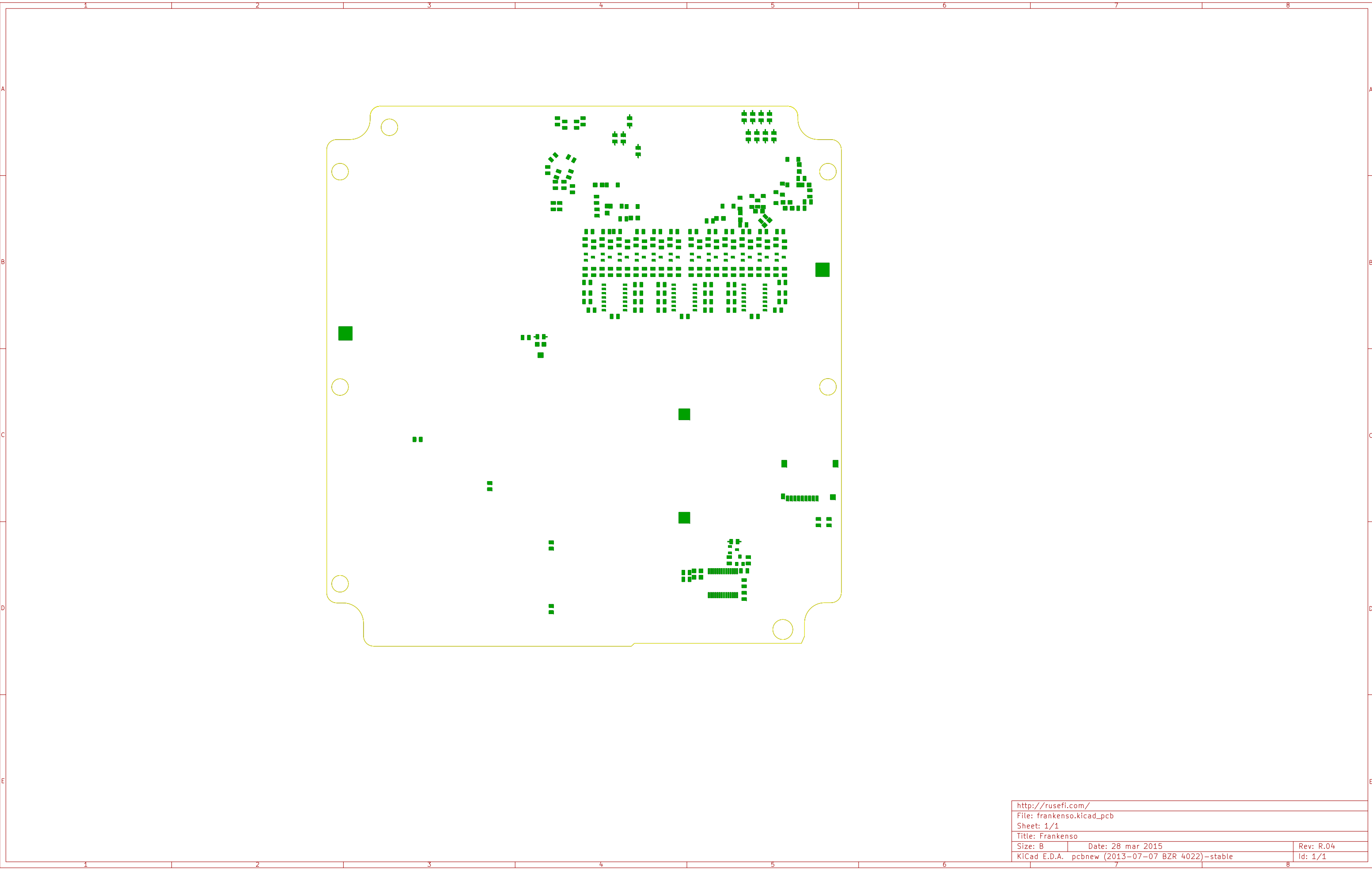
http://rusefi.com/		
File: frankenso.kicad_pcb		
Sheet: 1/1		
Title: Frankenso		
Size: B	Date: 28 mar 2015	Rev: R.04
KiCad E.D.A. pcbnew (2013-07-07 BZR 4022)-stable		Id: 1/1



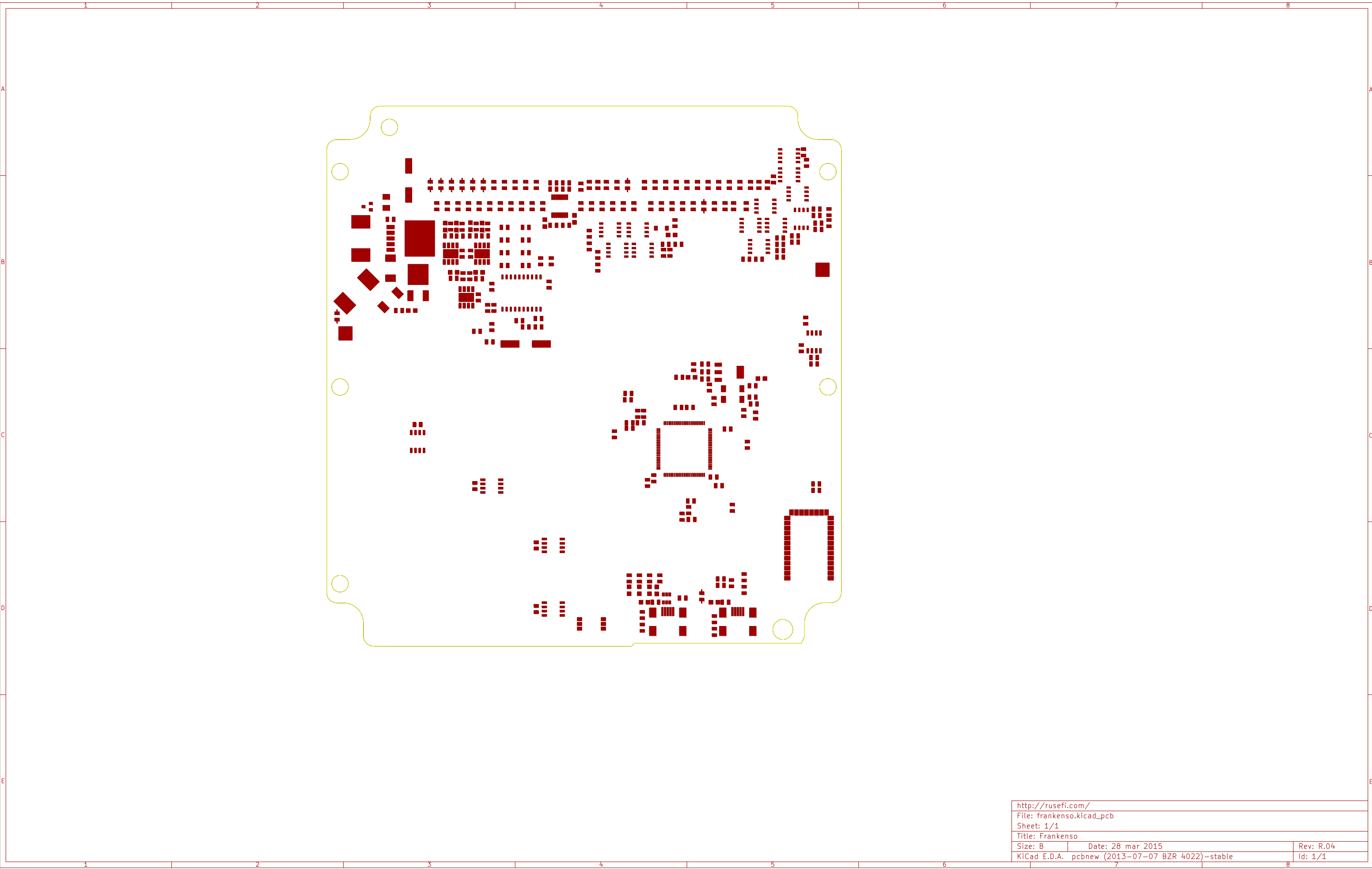
http://rusefi.com/		
File: frankenso.kicad_pcb		
Sheet: 1/1		
Title: Frankenso		
Size: B	Date: 28 mar 2015	Rev: R.04
KiCad E.D.A. pcbnew (2013-07-07 BZR 4022)-stable		Id: 1/1



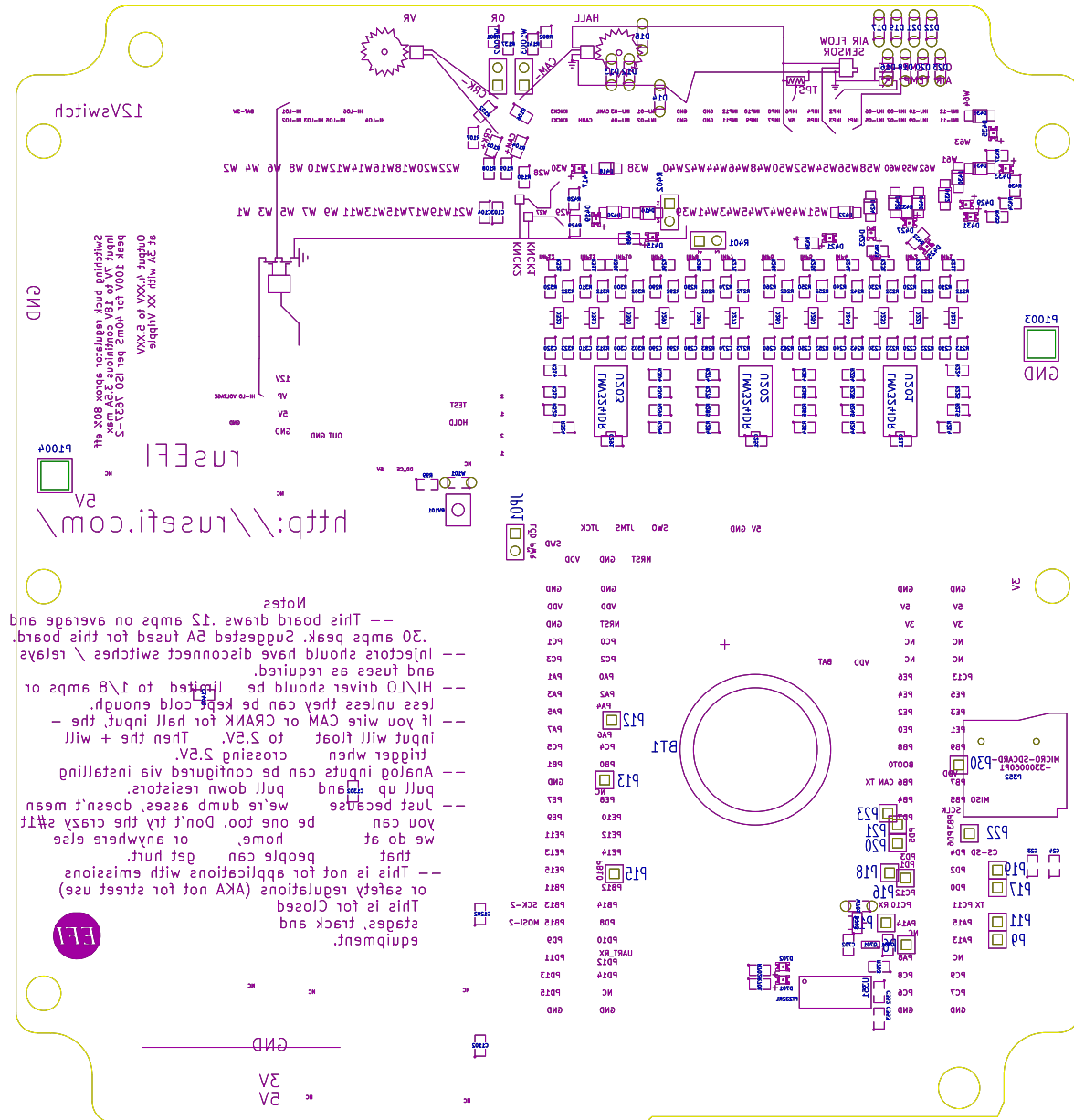
http://rusefi.com/		
File: frankenso.kicad_pcb		
Sheet: 1/1		
Title: Frankenso		
Size: B	Date: 28 mar 2015	Rev: R.04
KiCad E.D.A. pcbnew (2013-07-07 BZR 4022)-stable		Id: 1/1



http://rusefi.com/		
File: frankenso.kicad_pcb		
Sheet: 1/1		
Title: Frankenso		
Size: B	Date: 28 mar 2015	Rev: R.04
KiCad E.D.A. pcbnew (2013-07-07 BZR 4022)-stable		Id: 1/1



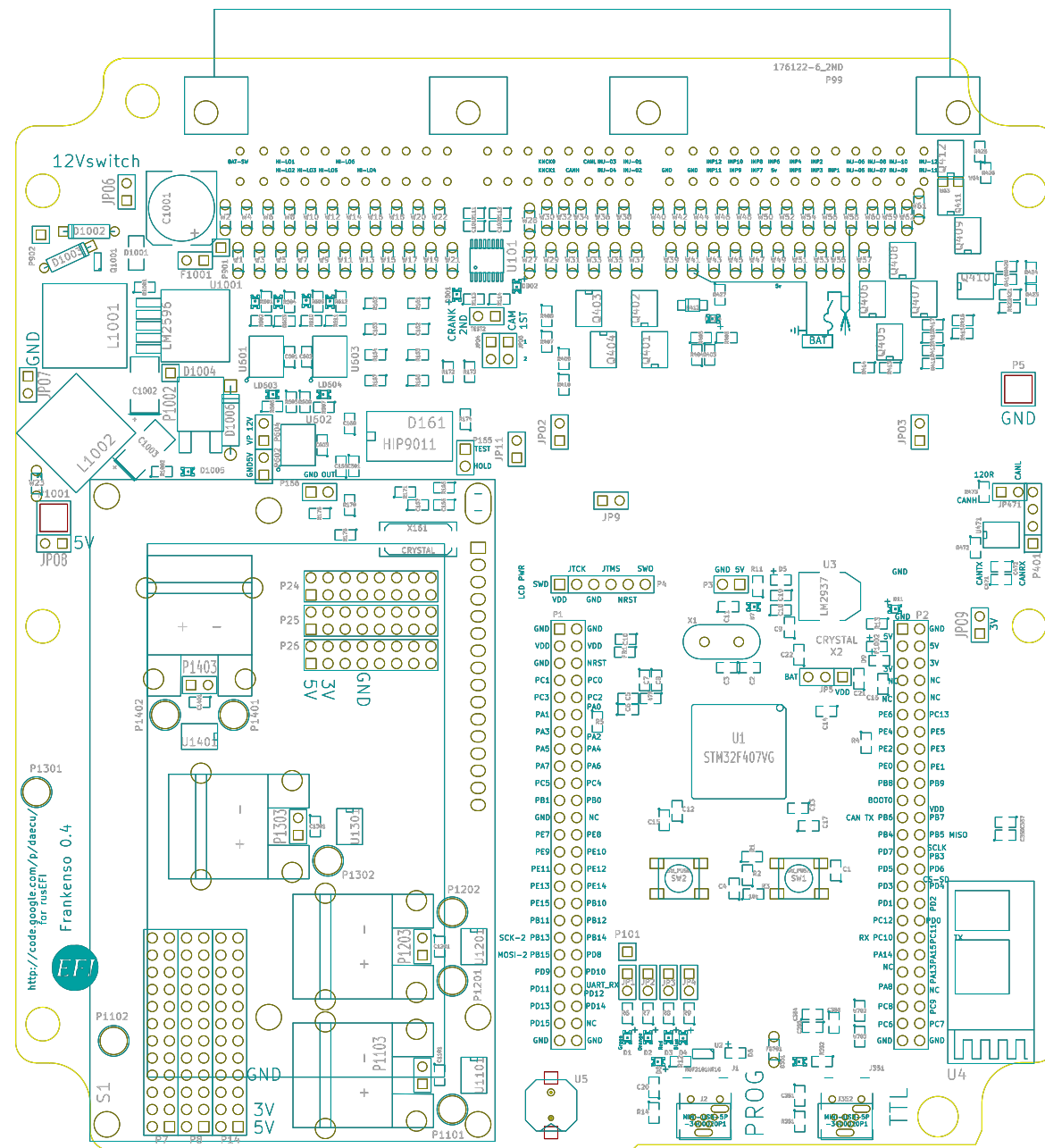
http://rusefi.com/		
File: frankenso.kicad_pcb		
Sheet: 1/1		
Title: Frankenso		
Size: B	Date: 28 mar 2015	Rev: R.04
KiCad E.D.A. pcbnew (2013-07-07 BZR 4022)-stable		Id: 1/1



http://rusefi.com
 2V
 GND

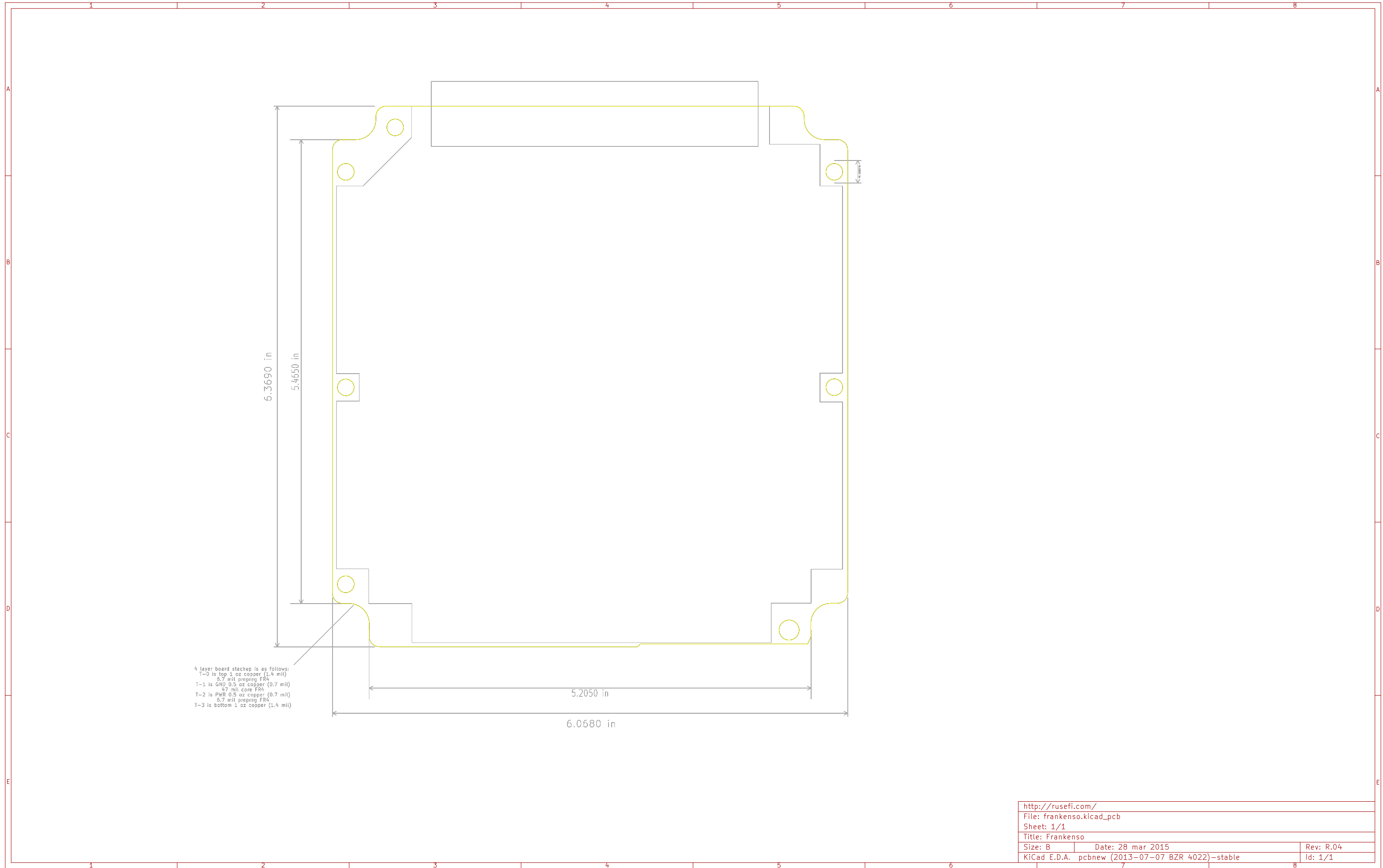
Notes
 -- This board draws 1.5 amps on average and
 3.0 amps peak. Suggested 2A fuses for this board.
 -- Injectors should have disconnect switches \ relays
 and fuses as required.
 -- HI\LO driver should be limited to 1.8 amps or
 less unless they can be kept cold enough.
 -- If you wire CAM or CRANK for hall input, the
 input will float to 2.5V. Then the + will
 trigger when crossing 2.5V.
 -- Analog inputs can be configured via installing
 pull up resistors.
 -- Just because we're dumb asses, doesn't mean
 you can't be one too. Don't try the crazy shit
 we do at home, or anywhere else.
 -- This is not for applications with emissions
 or safety regulations (AKA not for street use)
 This is for Closed
 stages, track and
 equipment.
 E11

P1002	GND	GND	GND	GND	GND	GND
U1	ATmega328P					
R1-R10	1M32510DK					
C1-C10	Various					
P1004	I2C					
P1005	Sensor					
BTL	Cutout					
SW1	12V Switch					



<http://code.google.com/p/ascu/>
 for rusefi
 Frankenso 0.4


http://rusefi.com/		
File: frankenso.kicad_pcb		
Sheet: 1/1		
Title: Frankenso		
Size: B	Date: 28 mar 2015	Rev: R.04
KiCad E.D.A. pcbnew (2013-07-07 BZR 4022)-stable		Id: 1/1



http://rusefi.com/		
File: frankenso.kicad_pcb		
Sheet: 1/1		
Title: Frankenso		
Size: B	Date: 28 mar 2015	Rev: R.04
KiCad E.D.A. pcbnew (2013-07-07 BZR 4022)-stable		Id: 1/1