

Locate output caps near connector pin

github.com/mck1117/proteus

rusEffi

Sheet: /lowside_quad1/

File: lowside_quad.sch

Title: rusEffi Proteus

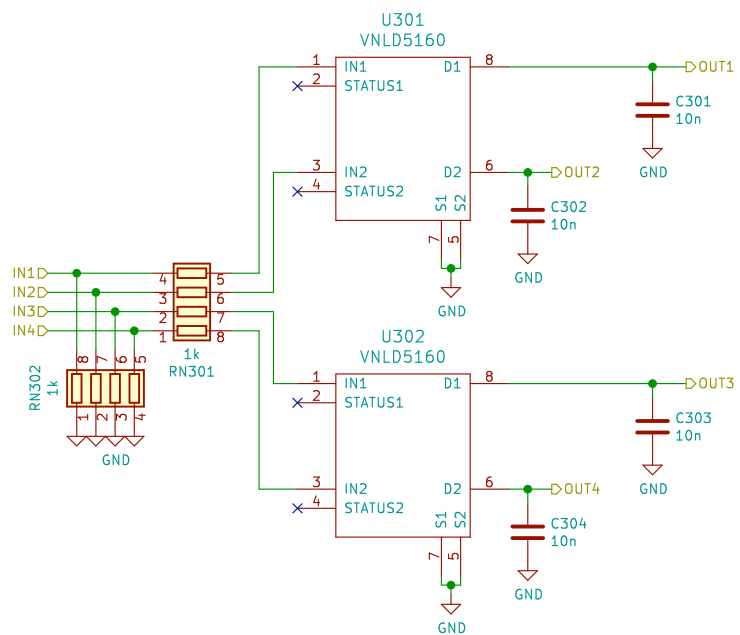
Size: A4

Date: 2020-01-17

Rev: v0.2

KiCad E.D.A. kicad (5.1.5-0-10_14)

Id: 2/19



Locate output caps near connector pin

github.com/mck1117/proteus

rusEffi

Sheet: /lowside_quad2/

File: lowside_quad.sch

Title: rusEffi Proteus

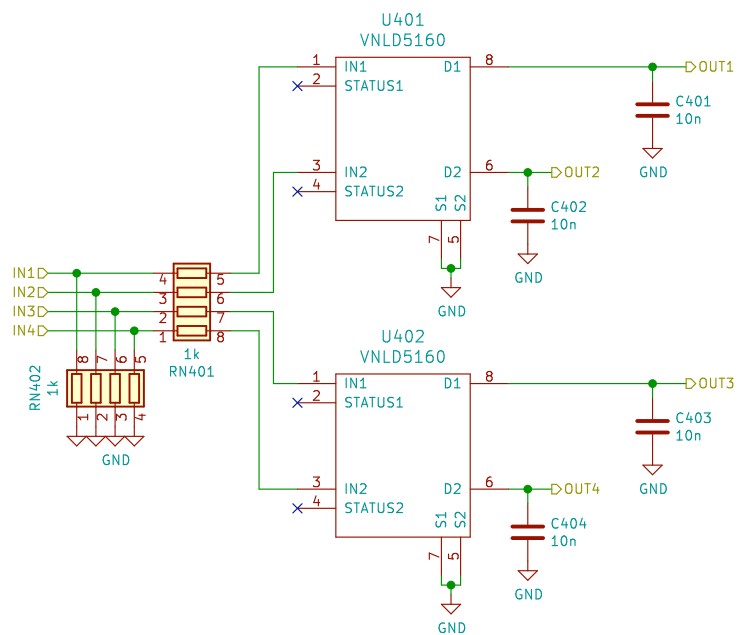
Size: A4

Date: 2020-01-17

Rev: v0.2

KiCad E.D.A. kicad (5.1.5-0-10_14)

Id: 3/19



Locate output caps near connector pin

github.com/mck1117/proteus

rusEffi

Sheet: /lowside_quad3/

File: lowside_quad.sch

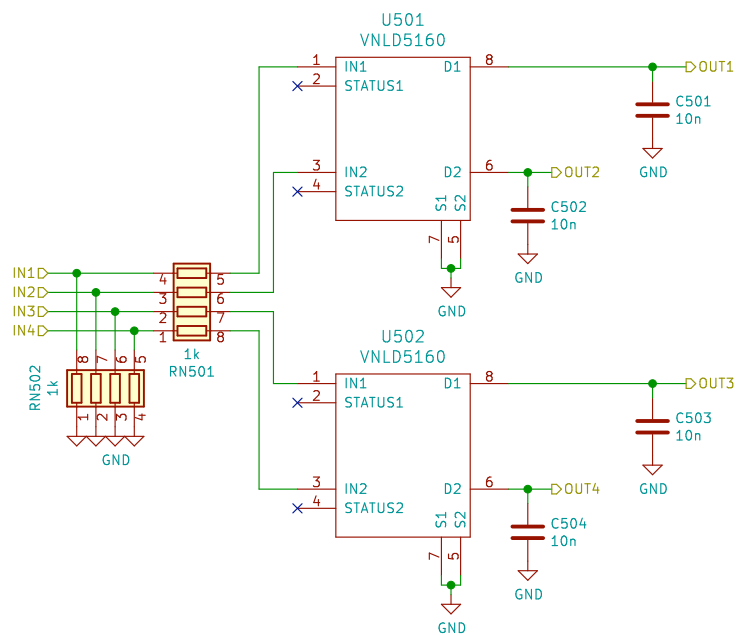
Title: rusEffi Proteus

Size: A4 Date: 2020-01-17

KiCad E.D.A. kicad (5.1.5-0-10_14)

Rev: v0.2

Id: 4/19



Locate output caps near connector pin

github.com/mck1117/proteus

rusEffi

Sheet: /lowside_quad4/

File: lowside_quad.sch

Title: rusEffi Proteus

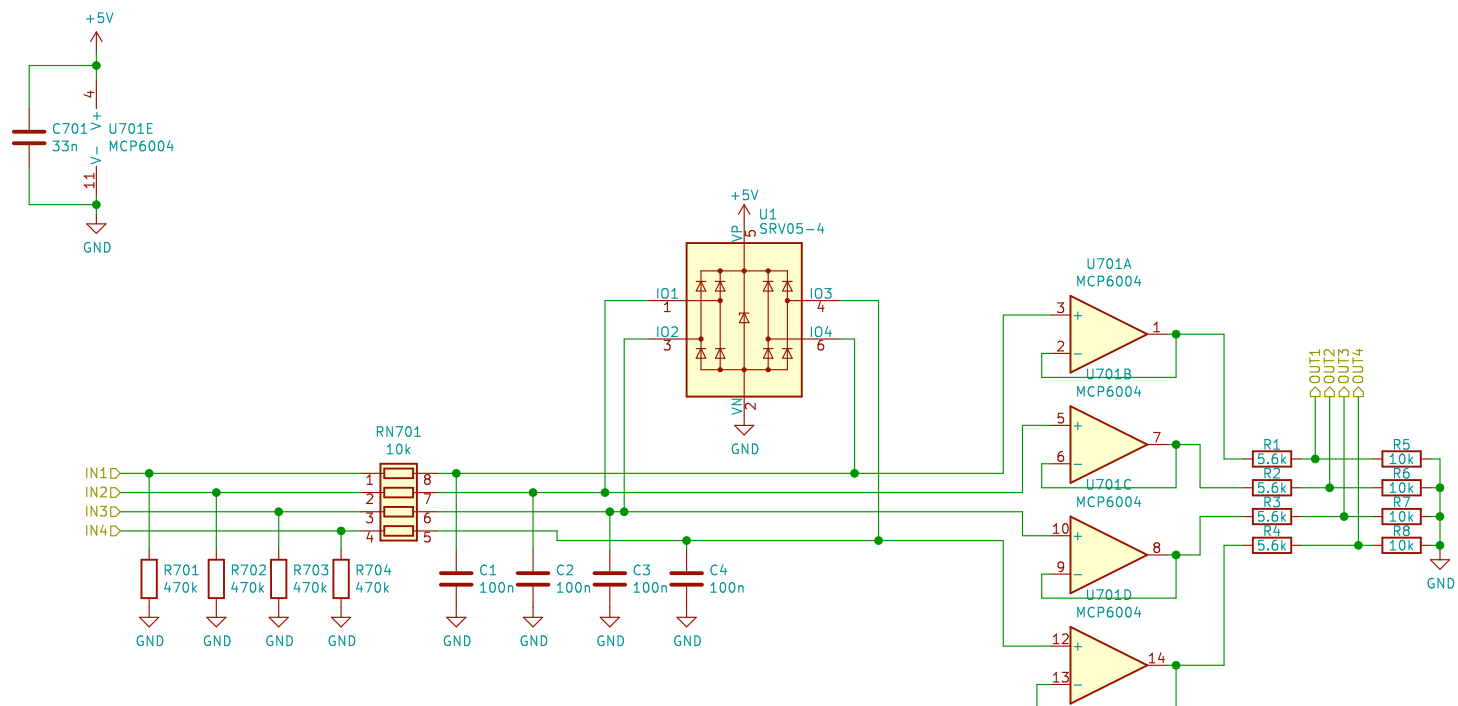
Size: A4

Date: 2020-01-17

Rev: v0.2

KiCad E.D.A. kicad (5.1.5-0-10_14)

Id: 5/19



github.com/mck1117/proteus
rusEffi

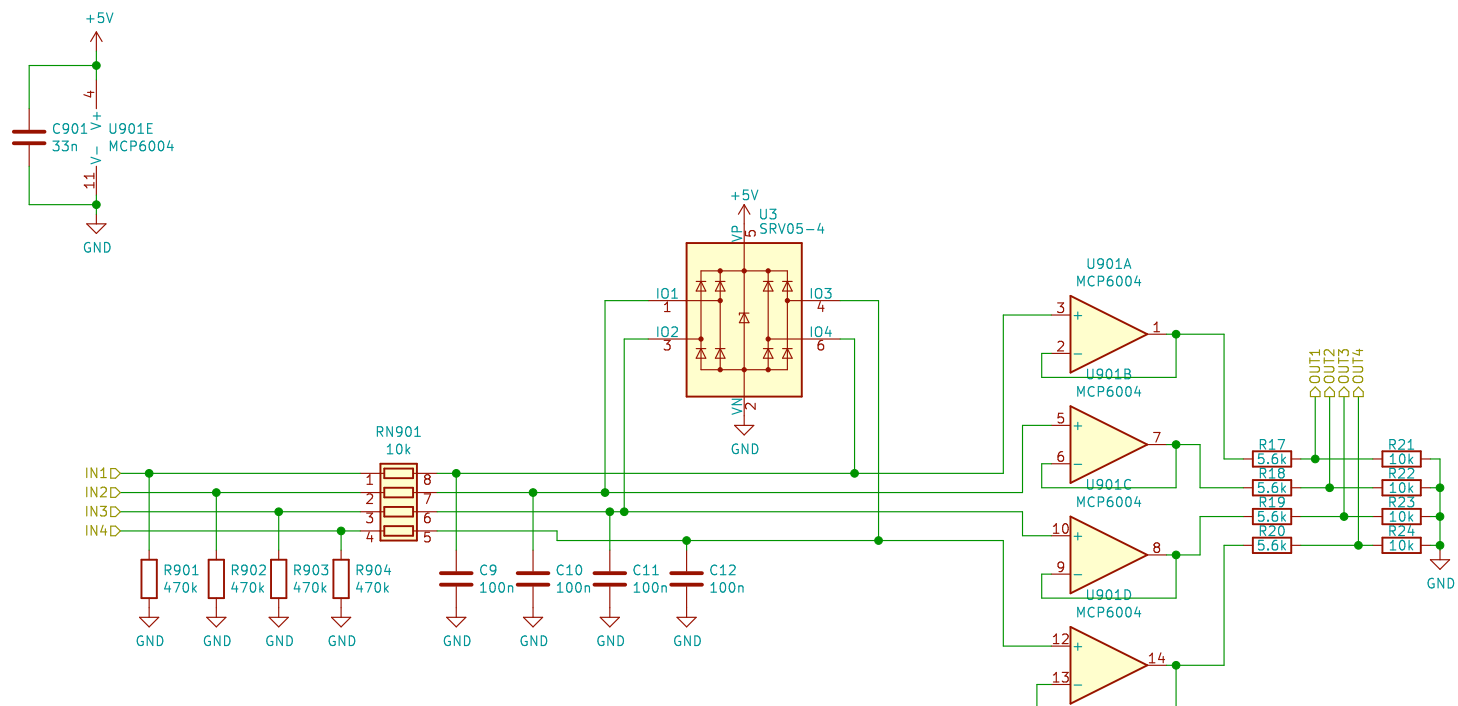
Sheet: /quad_analog1/
 File: quad_analog.sch

Title: rusEffi Proteus

Size: A4 Date: 2020-01-17
 KiCad E.D.A. kicad (5.1.5-0-10_14)

Rev: v0.2
 Id: 6/19





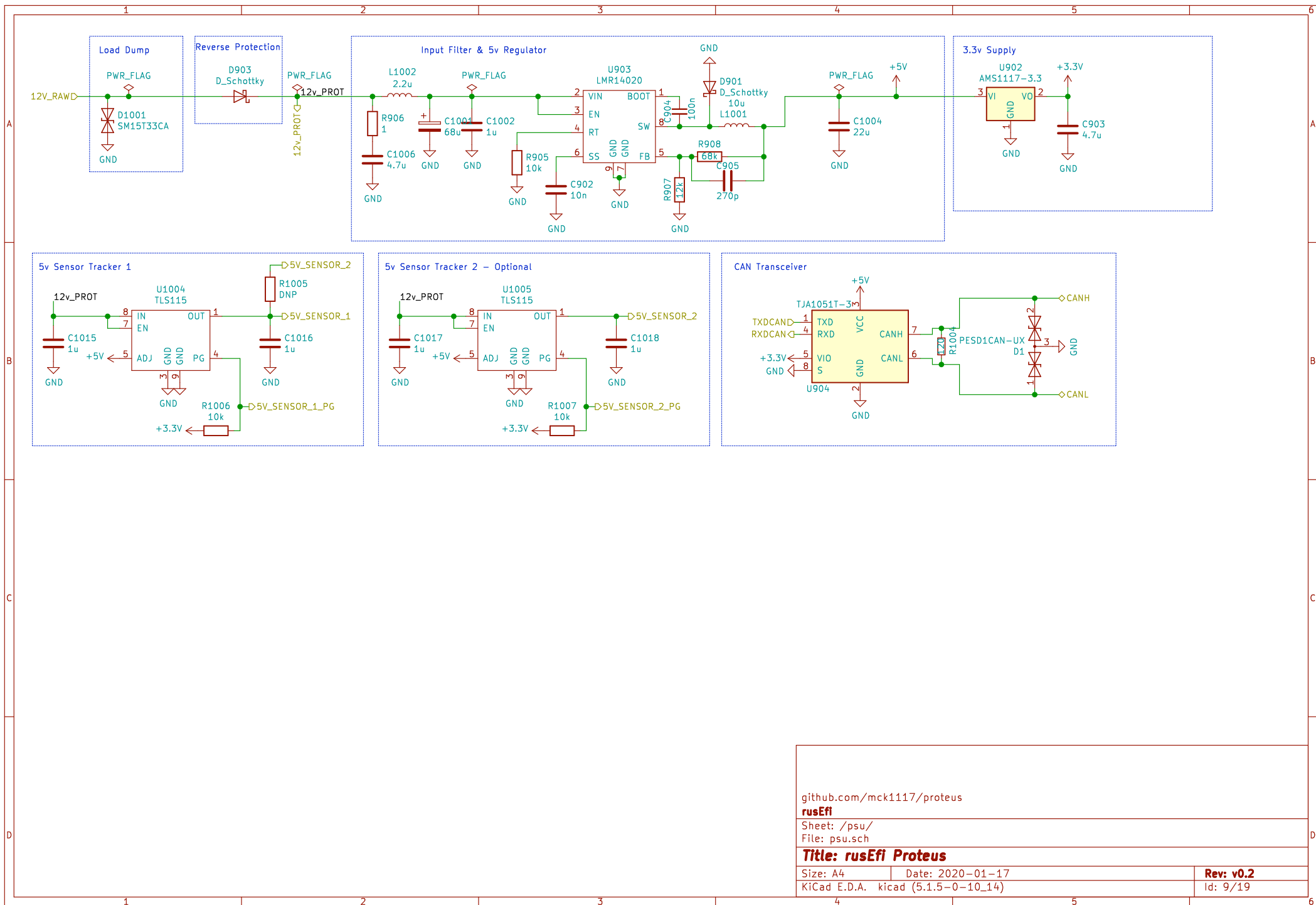
github.com/mck1117/proteus
rusEffi

Sheet: /quad_analog3/
 File: quad_analog.sch

Title: rusEffi Proteus

Size: A4 Date: 2020-01-17
 KiCad E.D.A. kicad (5.1.5-0-10_14)

Rev: v0.2
 Id: 8/19



github.com/mck1117/proteus

rusEffi

Sheet: /psu/

File: psu.sch

Title: rusEffi Proteus

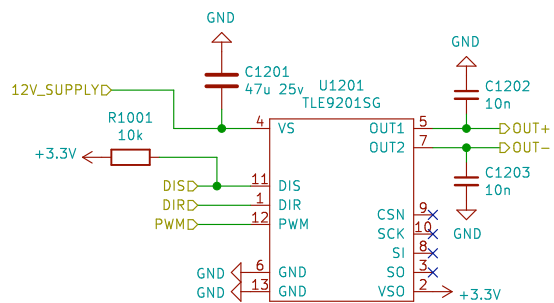
Size: A4

Date: 2020-01-17

KiCad E.D.A. kicad (5.1.5-0-10_14)

Rev: v0.2

Id: 9/19



IFX9201 also acceptable

github.com/mck1117/proteus

rusEfi

Sheet: /etb1/

File: etb.sch

Title: rusEfi Proteus

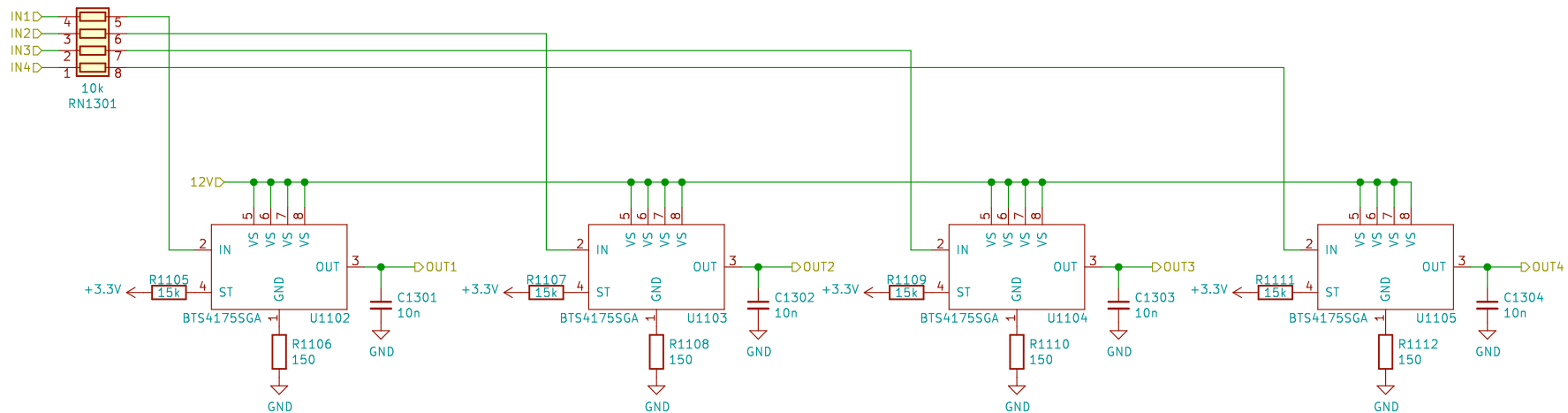
Size: A4

Date: 2020-01-17

Rev: v0.2

KiCad E.D.A. kicad (5.1.5-0-10_14)

Id: 10/19



github.com/mck1117/proteus

rusEffi

Sheet: /highside_quad/

File: highside_quad.sch

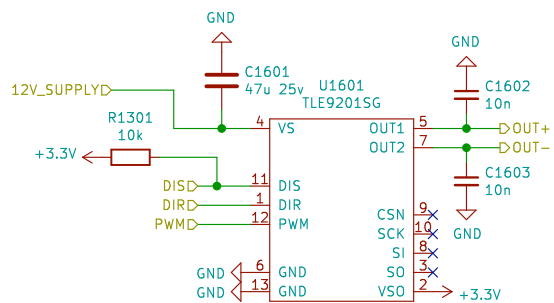
Title: rusEffi Proteus

Size: A4 Date: 2020-01-17

KiCad E.D.A. kicad (5.1.5-0-10_14)

Rev: v0.2

Id: 11/19



IFX9201 also acceptable

github.com/mck1117/proteus

rusEfi

Sheet: /etb2/

File: etb.sch

Title: rusEfi Proteus

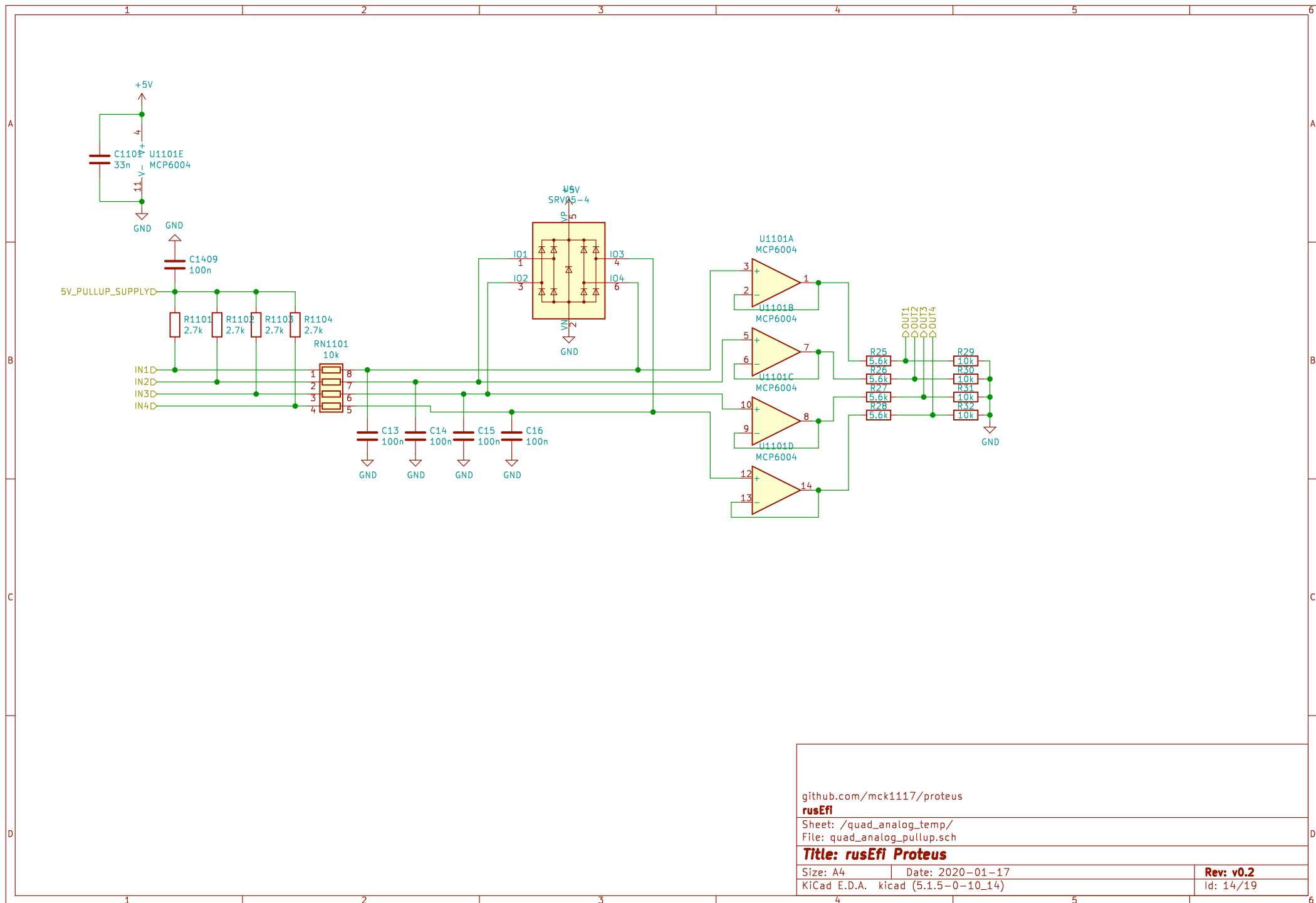
Size: A4

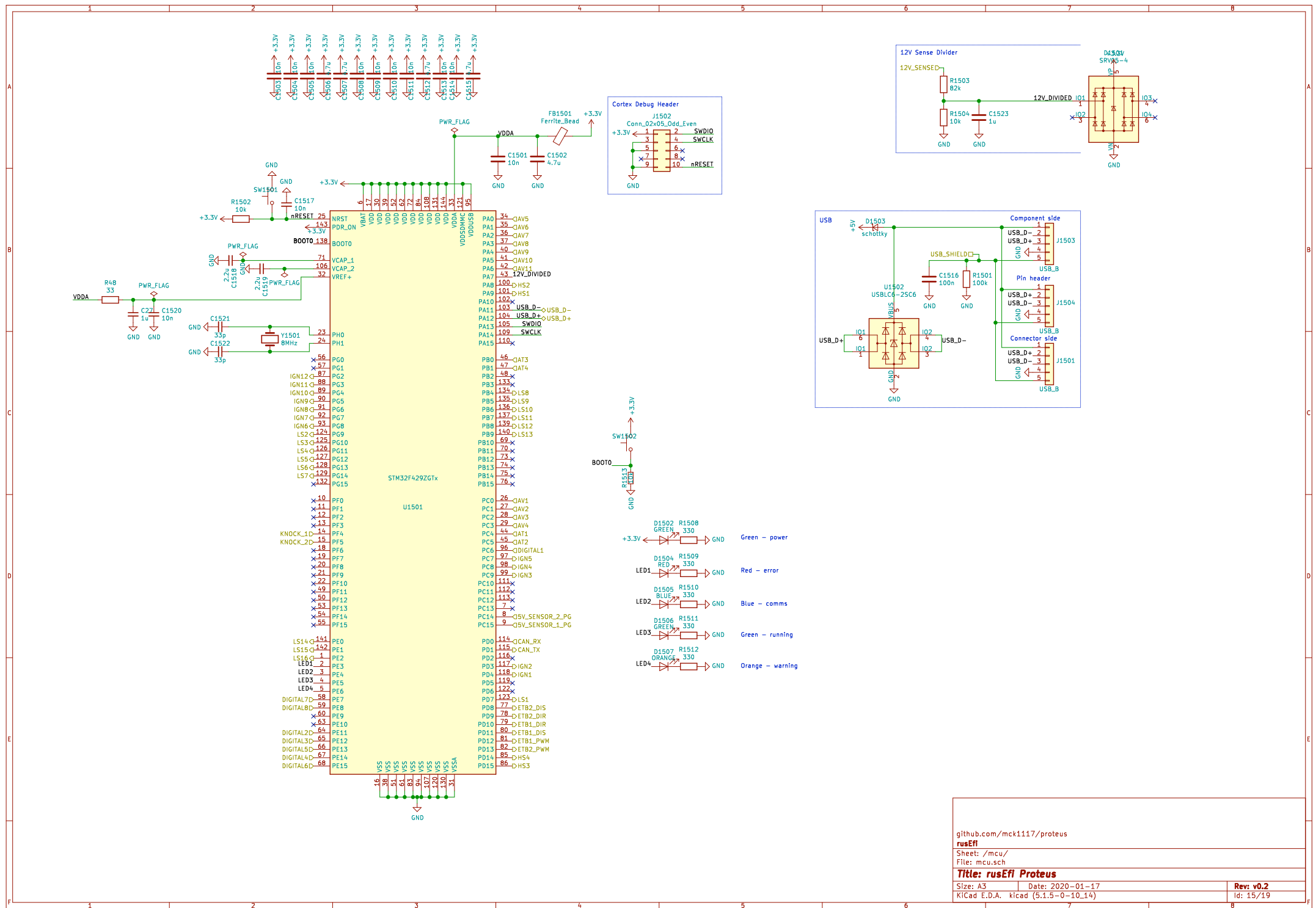
Date: 2020-01-17

Rev: v0.2

KiCad E.D.A. kicad (5.1.5-0-10_14)

Id: 13/19





github.com/mck1117/proteus

rusEfi

Sheet: /mcu/

File: mcu.sch

Title: rusEfi Proteus

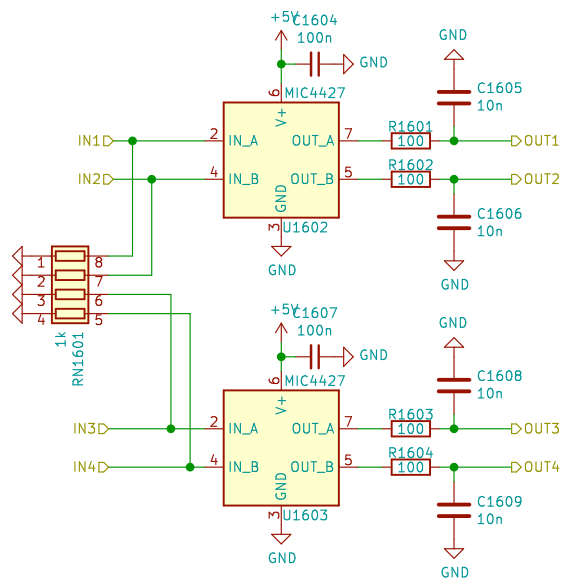
Size: A3

Date: 2020-01-17

Rev: v0.2

KiCad E.D.A. kicad (5.1.5-0-10_14)

Id: 15/19



github.com/mck1117/proteus

rusEfi

Sheet: /ign1/

File: ign4.sch

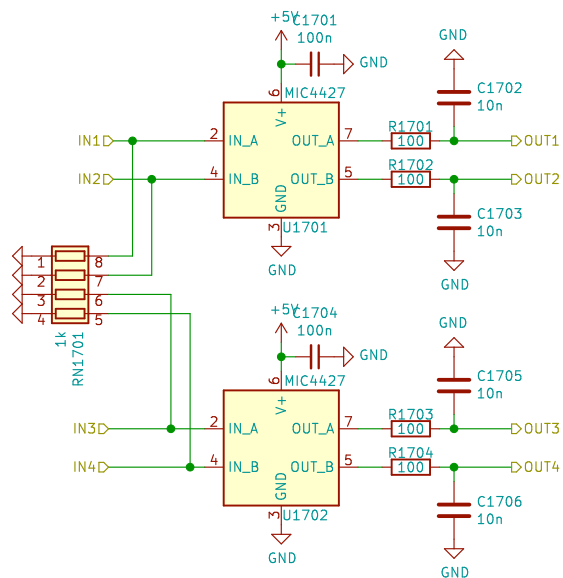
Title: rusEfi Proteus

Size: A4 Date: 2020-01-17

KiCad E.D.A. kicad (5.1.5-0-10_14)

Rev: v0.2

Id: 16/19



github.com/mck1117/proteus

rusEfi

Sheet: /ign2/

File: ign4.sch

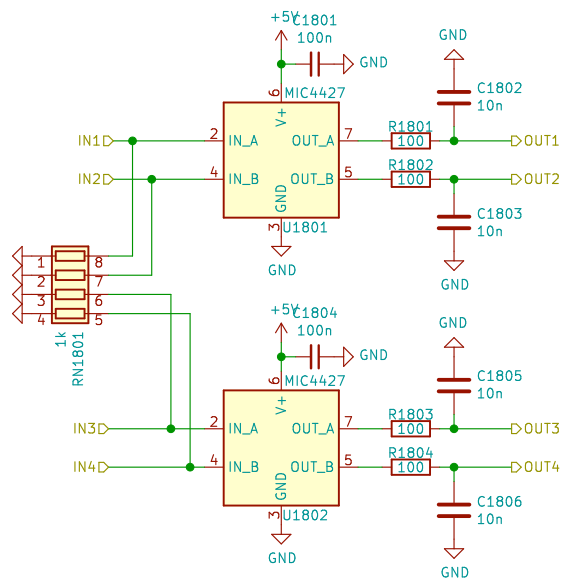
Title: rusEfi Proteus

Size: A4 Date: 2020-01-17

KiCad E.D.A. kicad (5.1.5-0-10_14)

Rev: v0.2

Id: 17/19



github.com/mck1117/proteus

rusEfi

Sheet: /ign3/

File: ign4.sch

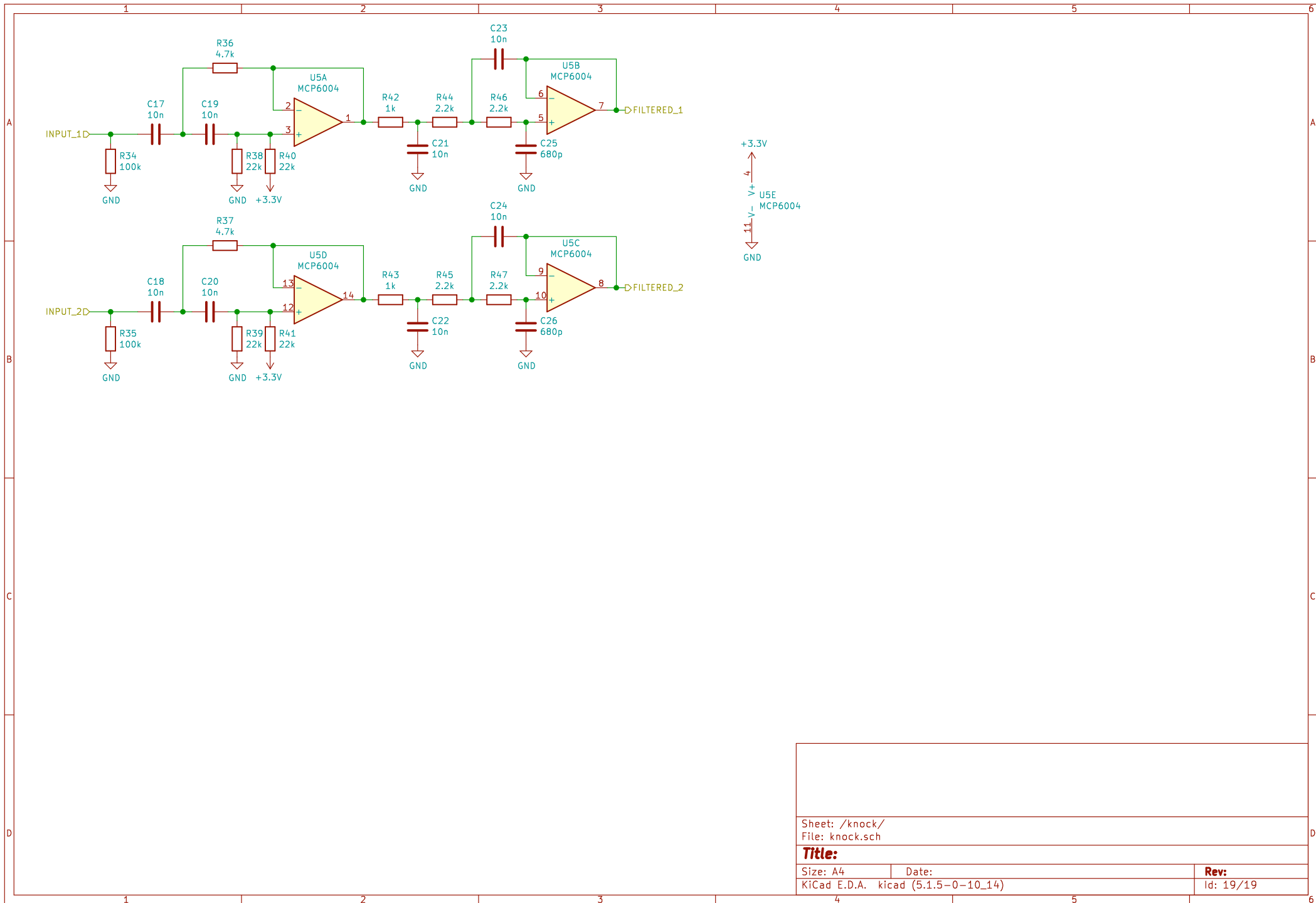
Title: rusEfi Proteus

Size: A4 Date: 2020-01-17

KiCad E.D.A. kicad (5.1.5-0-10_14)

Rev: v0.2

Id: 18/19



Sheet: /knock/
File: knock.sch

Title:

Size: A4

Date:

KiCad E.D.A. kicad (5.1.5-0-10_14)

Rev:

Id: 19/19