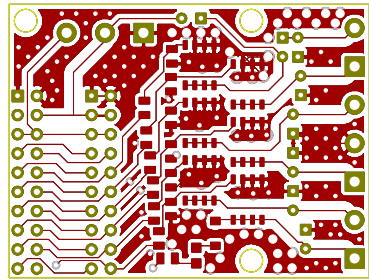
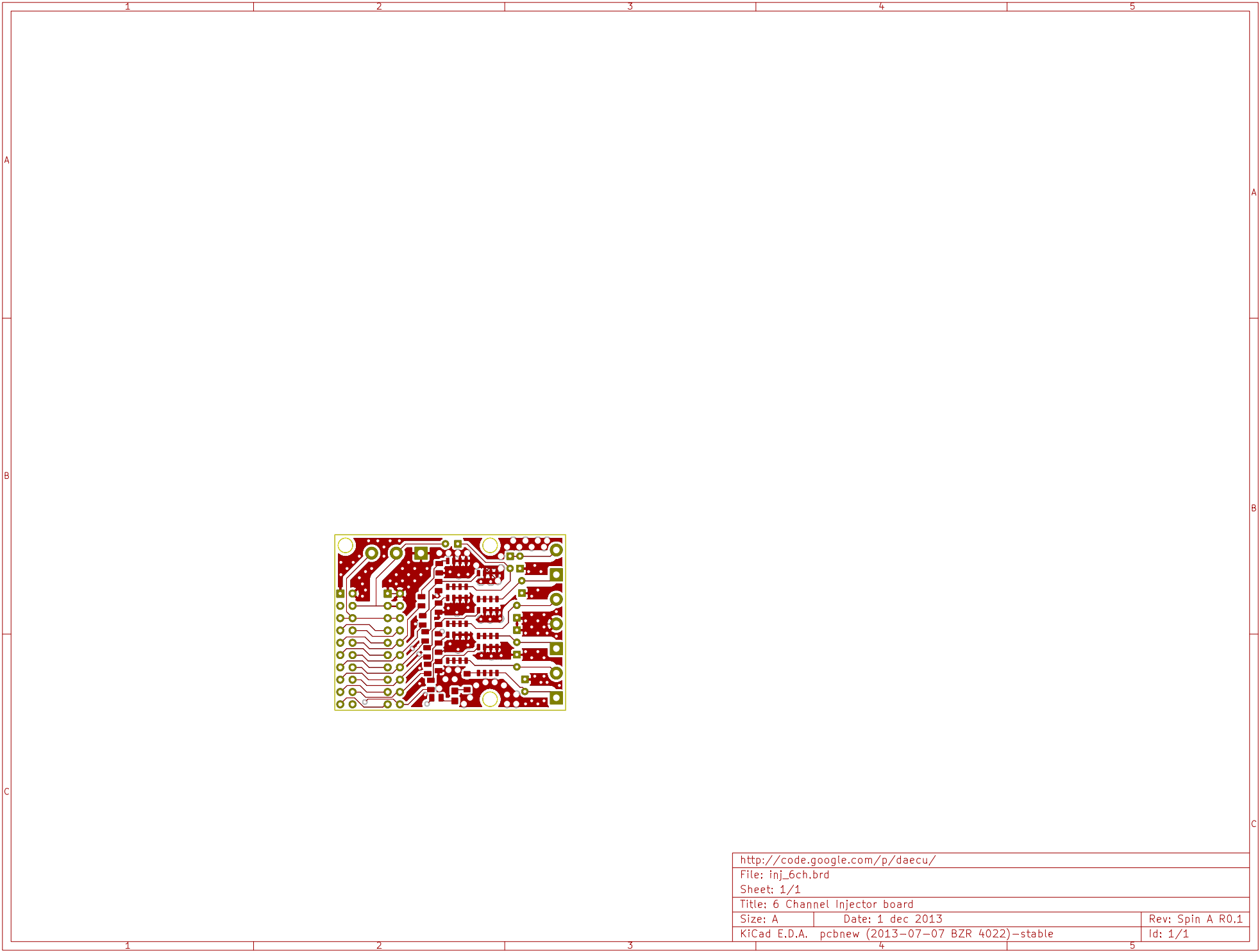
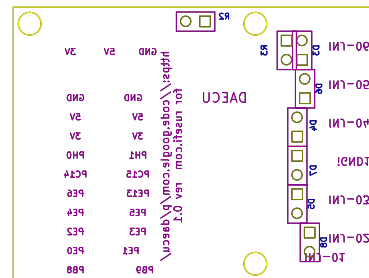


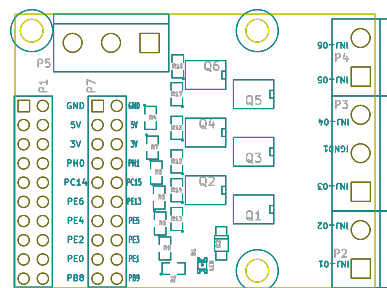
http://code.google.com/p/daecu/		
File: inj_6ch.brd		
Sheet: 1/1		
Title: 6 Channel Injector board		
Size: A	Date: 1 dec 2013	Rev: Spin A R0.1
KiCad E.D.A. pcbnew (2013-07-07 BZR 4022)-stable		Id: 1/1



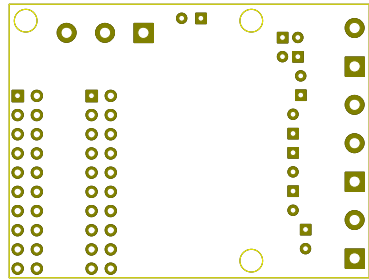
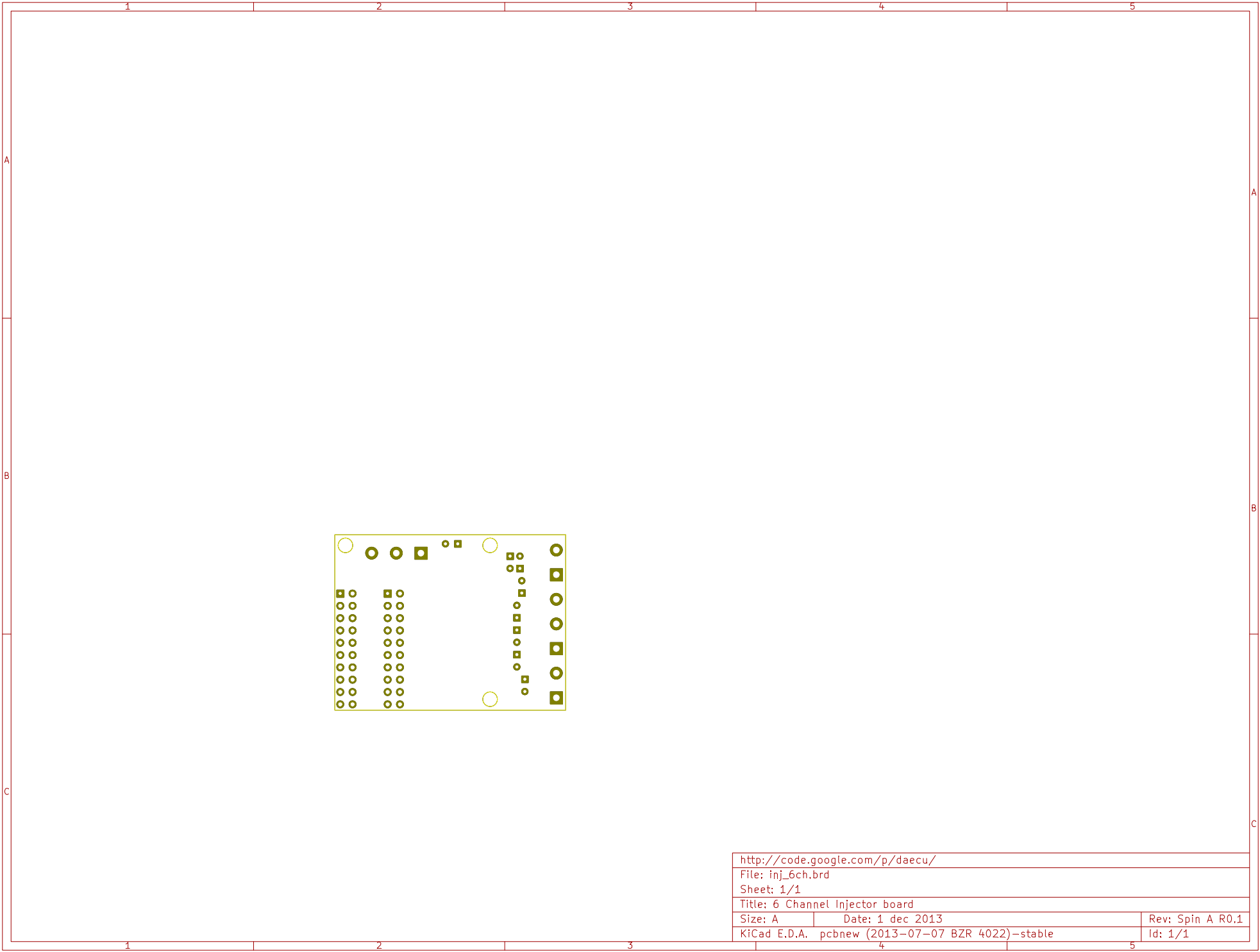
http://code.google.com/p/daecu/		
File: inj_6ch.brd		
Sheet: 1/1		
Title: 6 Channel Injector board		
Size: A	Date: 1 dec 2013	Rev: Spin A R0.1
KiCad E.D.A.	pcbnew (2013-07-07 BZR 4022)-stable	Id: 1/1



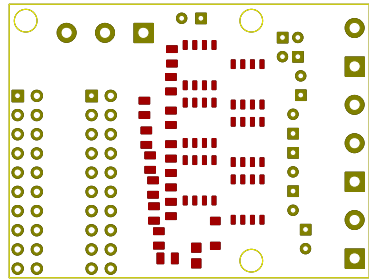
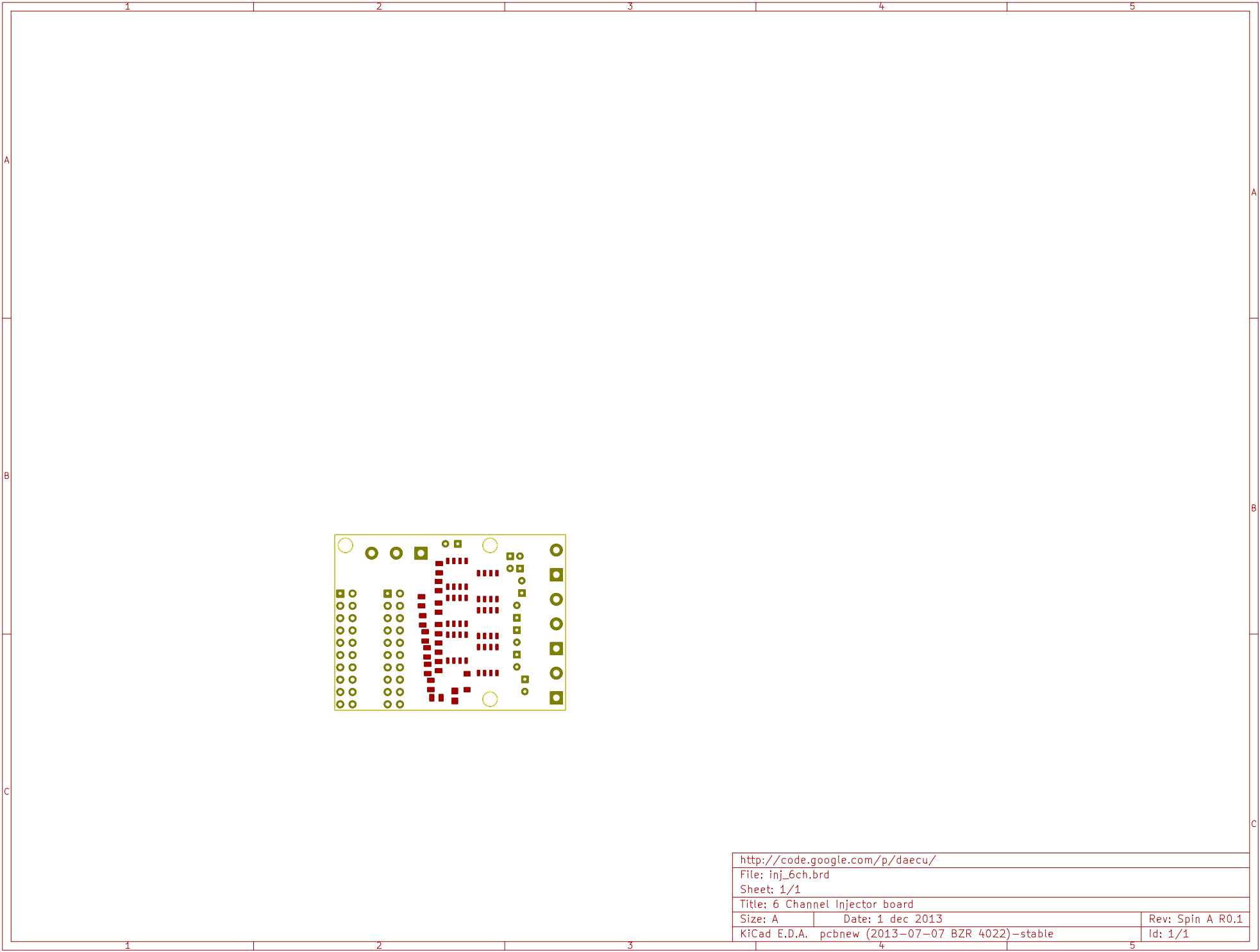
http://code.google.com/p/daecu/		
File: inj_6ch.brd		
Sheet: 1/1		
Title: 6 Channel Injector board		
Size: A	Date: 1 dec 2013	Rev: Spin A R0.1
KiCad E.D.A. pcbnew (2013-07-07 BZR 4022)-stable		Id: 1/1



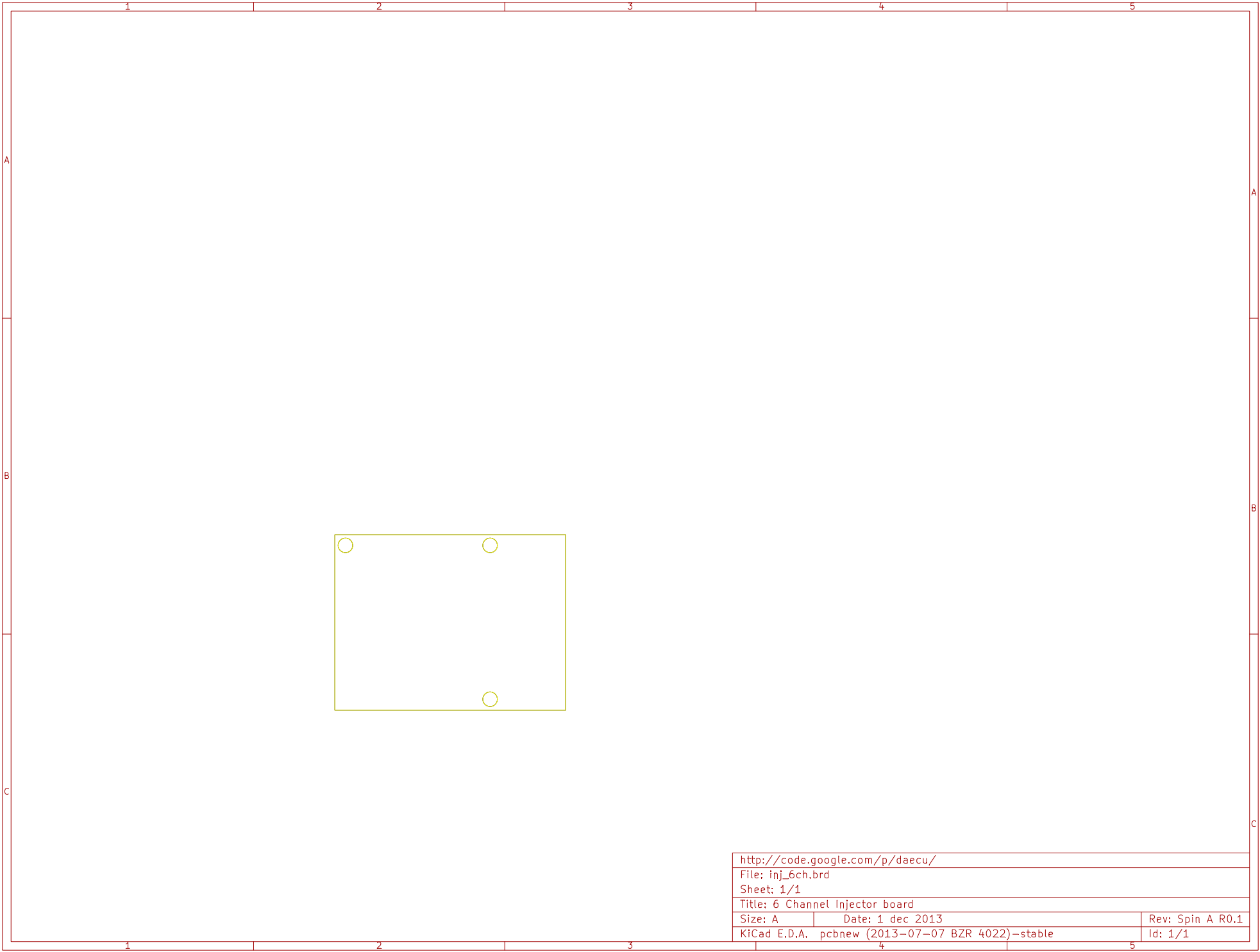
http://code.google.com/p/daecu/		
File: inj_6ch.brd		
Sheet: 1/1		
Title: 6 Channel Injector board		
Size: A	Date: 1 dec 2013	Rev: Spin A R0.1
KiCad E.D.A. pcbnew (2013-07-07 BZR 4022)-stable		Id: 1/1



http://code.google.com/p/daecu/		
File: inj_6ch.brd		
Sheet: 1/1		
Title: 6 Channel Injector board		
Size: A	Date: 1 dec 2013	Rev: Spin A R0.1
KiCad E.D.A. pcbnew (2013-07-07 BZR 4022)-stable		Id: 1/1



http://code.google.com/p/daecu/		
File: inj_6ch.brd		
Sheet: 1/1		
Title: 6 Channel Injector board		
Size: A	Date: 1 dec 2013	Rev: Spin A R0.1
KiCad E.D.A. pcbnew (2013-07-07 BZR 4022)-stable		Id: 1/1



http://code.google.com/p/daecu/		
File: inj_6ch.brd		
Sheet: 1/1		
Title: 6 Channel Injector board		
Size: A	Date: 1 dec 2013	Rev: Spin A R0.1
KiCad E.D.A. pcbnew (2013-07-07 BZR 4022)-stable		Id: 1/1