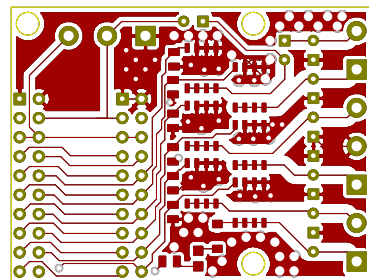
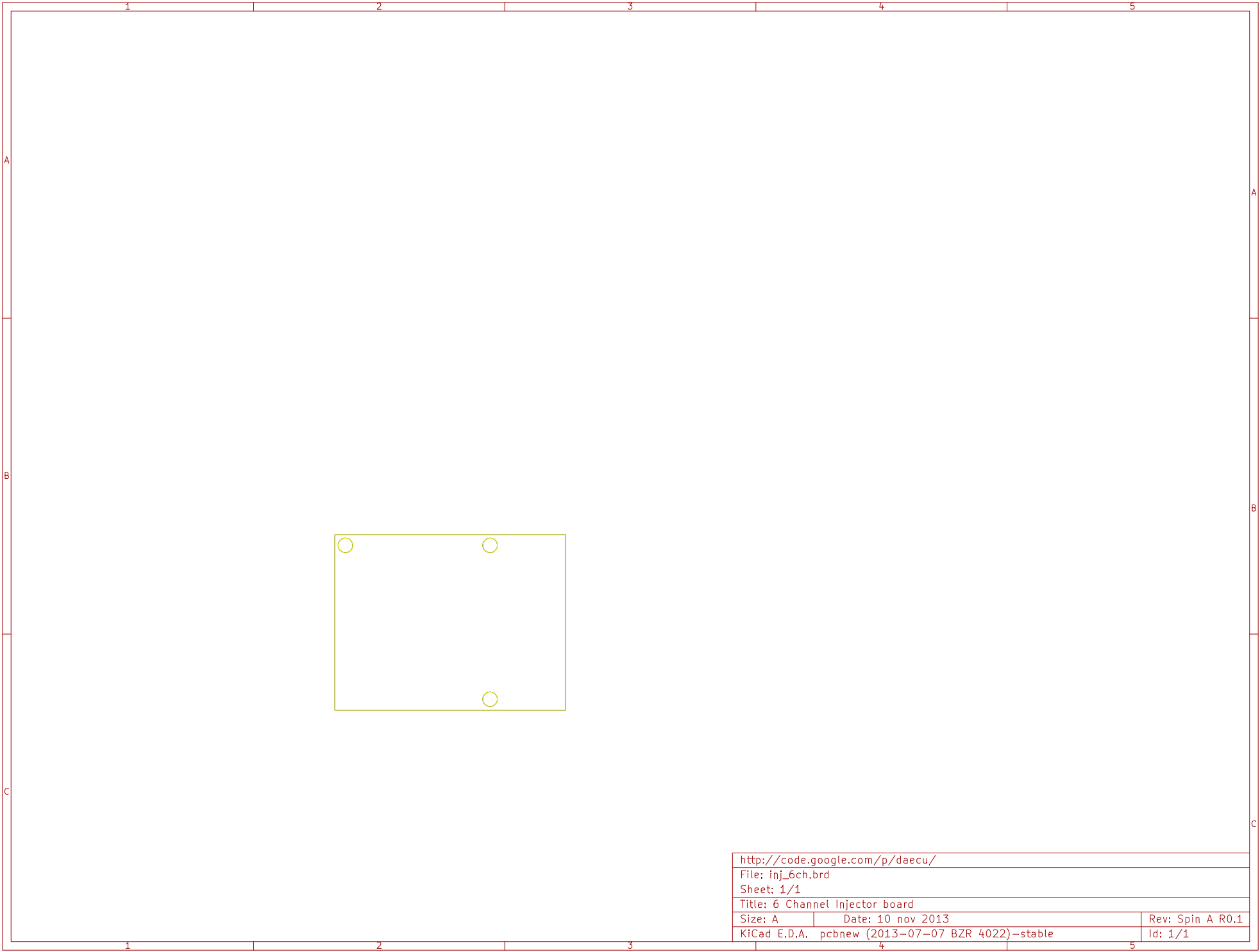


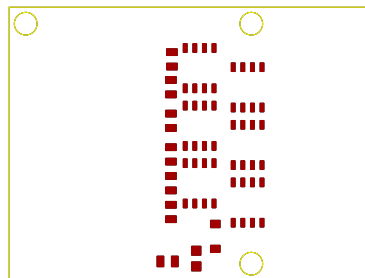
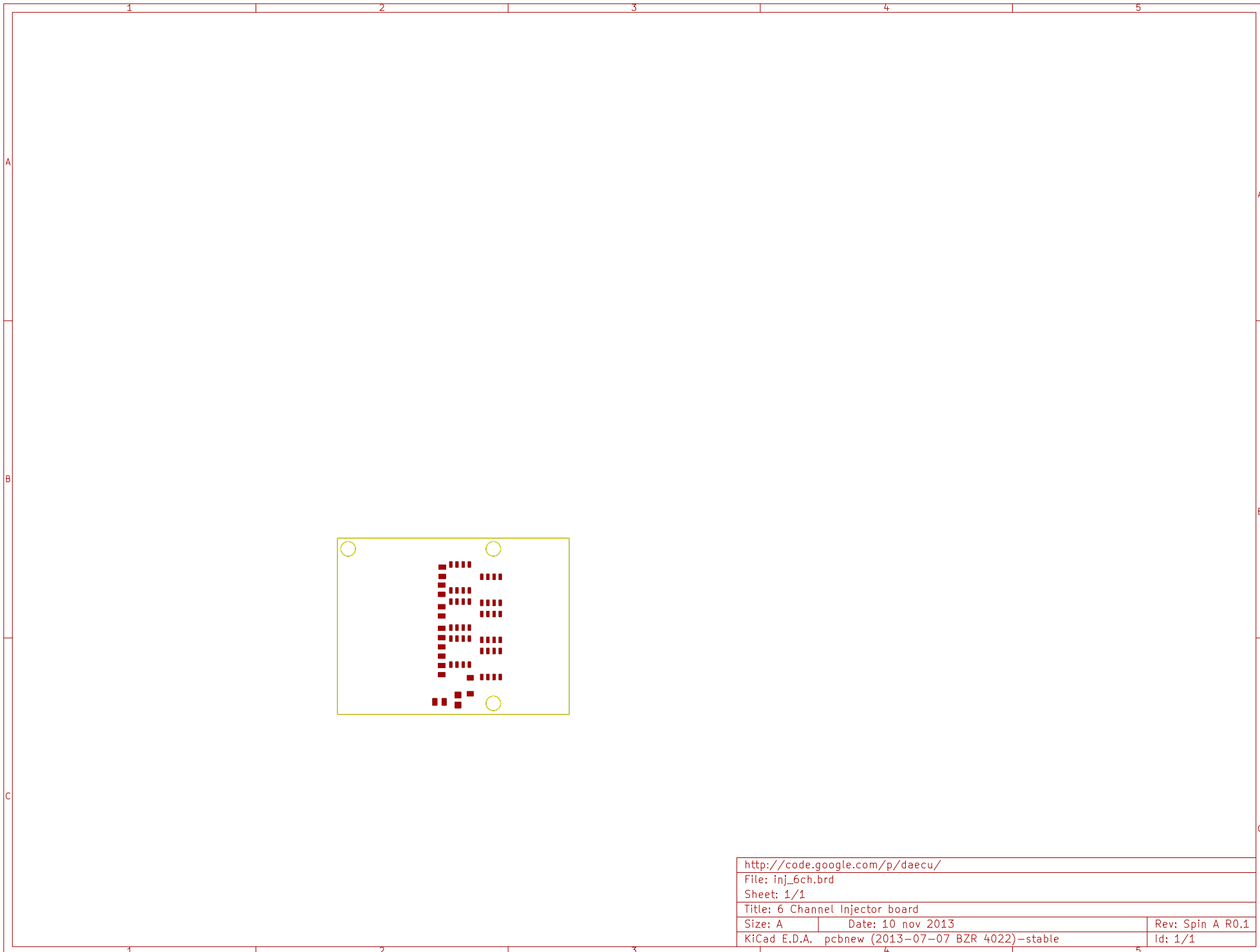
http://code.google.com/p/daecu/		
File: inj_6ch.brd		
Sheet: 1/1		
Title: 6 Channel Injector board		
Size: A	Date: 10 nov 2013	Rev: Spin A R0.1
KiCad E.D.A. pcbnew (2013-07-07 BZR 4022)-stable		Id: 1/1



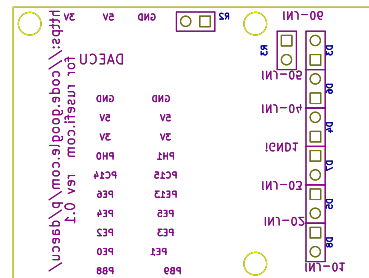
http://code.google.com/p/daecu/		
File: inj_6ch.brd		
Sheet: 1/1		
Title: 6 Channel Injector board		
Size: A	Date: 10 nov 2013	Rev: Spin A R0.1
KiCad E.D.A. pcbnew (2013-07-07 BZR 4022)-stable		Id: 1/1



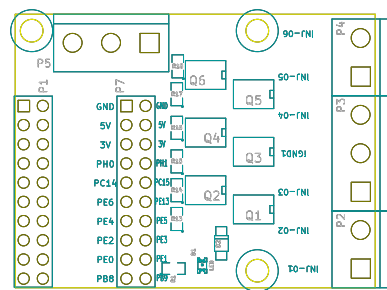
http://code.google.com/p/daecu/		
File: inj_6ch.brd		
Sheet: 1/1		
Title: 6 Channel Injector board		
Size: A	Date: 10 nov 2013	Rev: Spin A R0.1
KiCad E.D.A. pcbnew (2013-07-07 BZR 4022)-stable		Id: 1/1



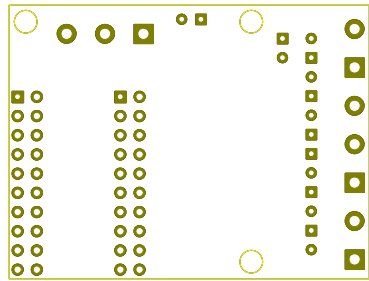
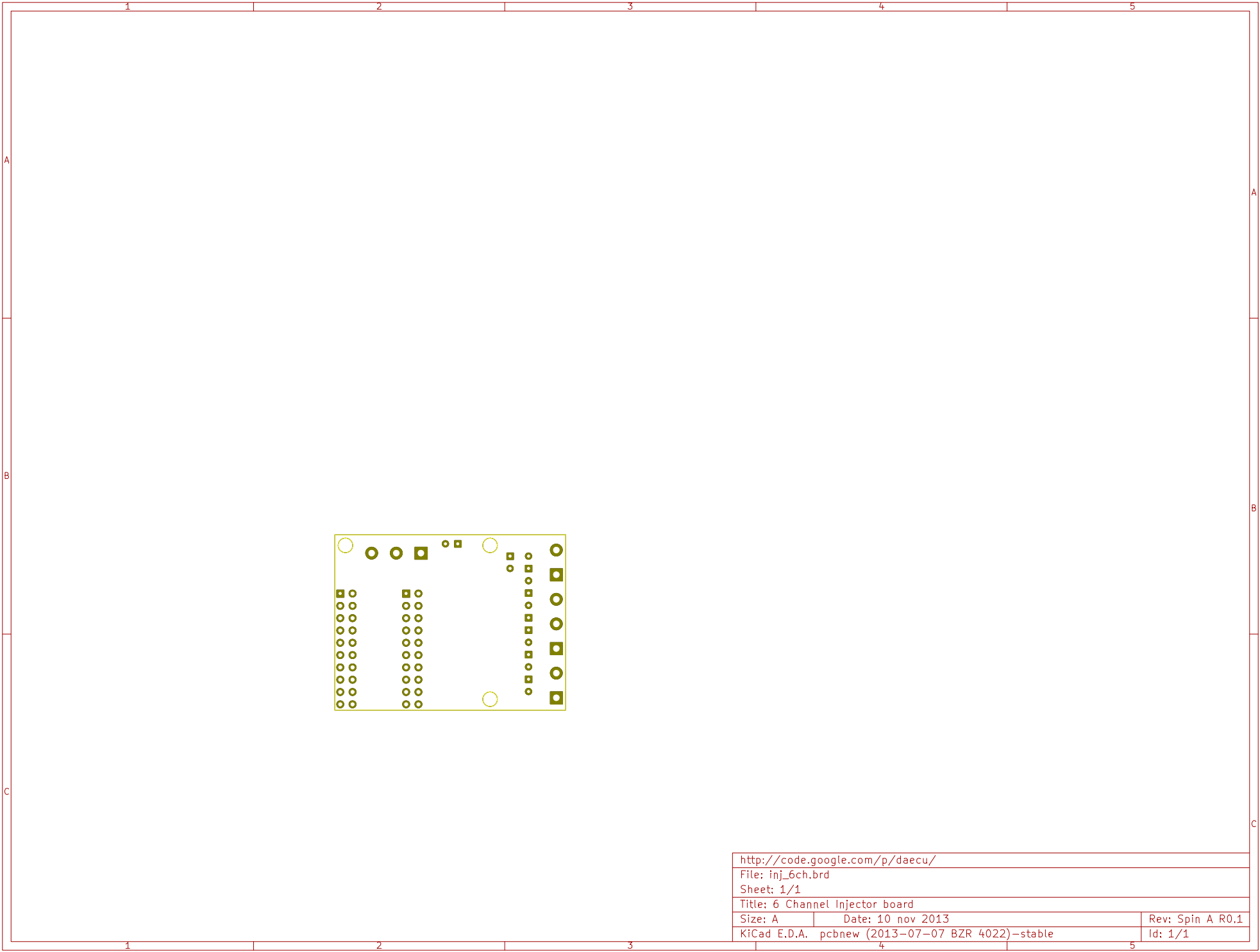
http://code.google.com/p/daecu/		
File: inj_6ch.brd		
Sheet: 1/1		
Title: 6 Channel Injector board		
Size: A	Date: 10 nov 2013	Rev: Spin A R0.1
KiCad E.D.A. pcbnew (2013-07-07 BZR 4022)-stable		Id: 1/1



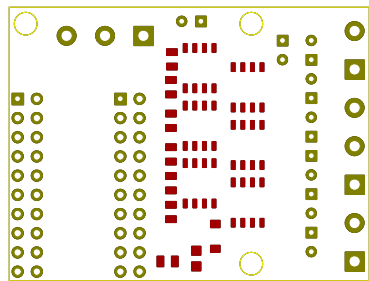
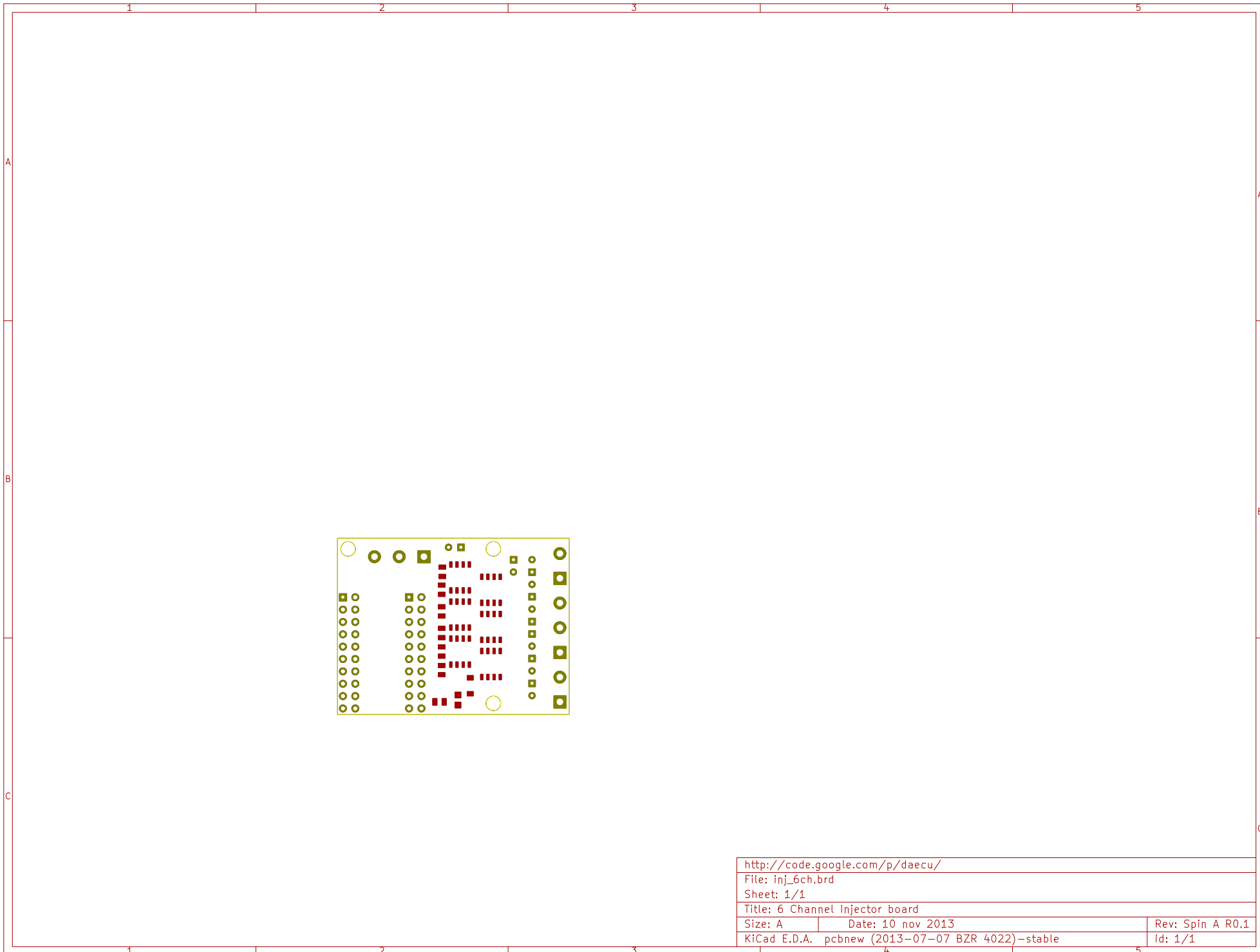
http://code.google.com/p/daecu/	
File: inj_6ch.brd	
Sheet: 1/1	
Title: 6 Channel Injector board	
Size: A	Date: 10 nov 2013
KiCad E.D.A. pcbnew (2013-07-07 BZR 4022)-stable	
Rev: Spin A R0.1	
Id: 1/1	



http://code.google.com/p/daecu/		
File: inj_6ch.brd		
Sheet: 1/1		
Title: 6 Channel Injector board		
Size: A	Date: 10 nov 2013	Rev: Spin A R0.1
KiCad E.D.A. pcbnew (2013-07-07 BZR 4022)-stable		Id: 1/1



http://code.google.com/p/daecu/		
File: inj_6ch.brd		
Sheet: 1/1		
Title: 6 Channel Injector board		
Size: A	Date: 10 nov 2013	Rev: Spin A R0.1
KiCad E.D.A. pcbnew (2013-07-07 BZR 4022)-stable		Id: 1/1



http://code.google.com/p/daecu/		
File: inj_6ch.brd		
Sheet: 1/1		
Title: 6 Channel Injector board		
Size: A	Date: 10 nov 2013	Rev: Spin A R0.1
KiCad E.D.A. pcbnew (2013-07-07 BZR 4022)-stable		Id: 1/1

